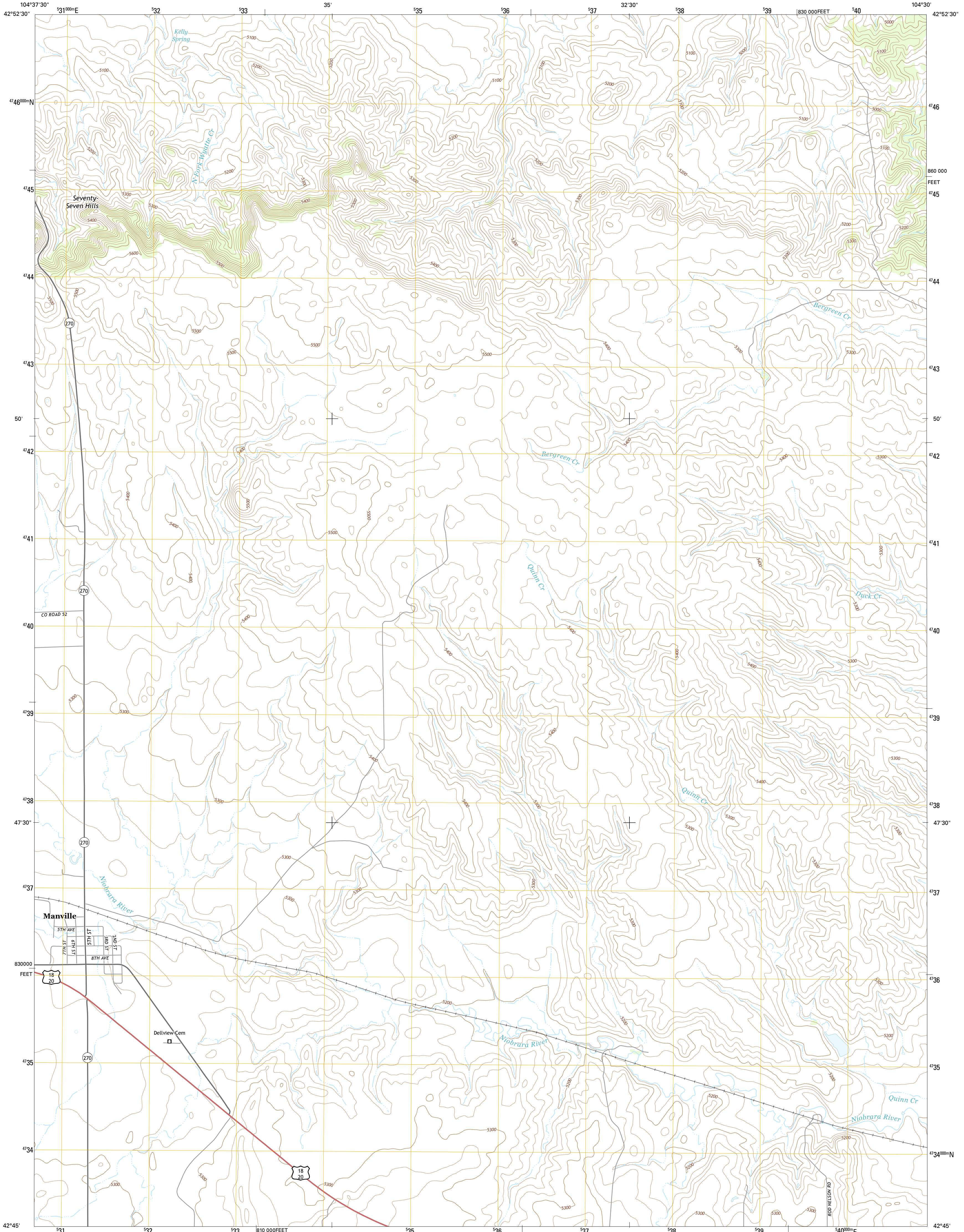




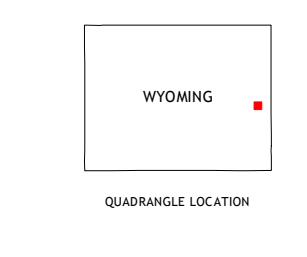
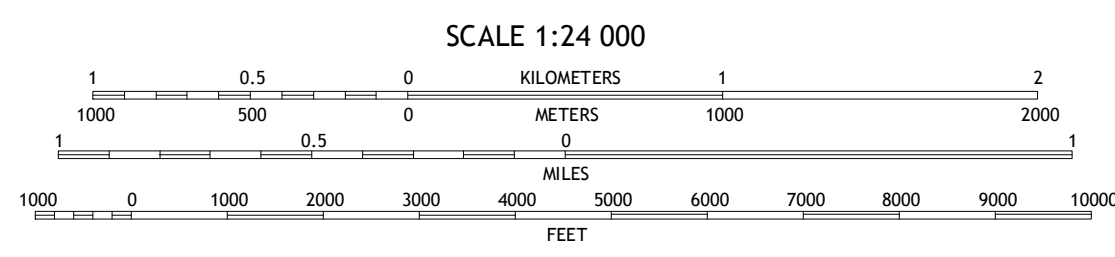
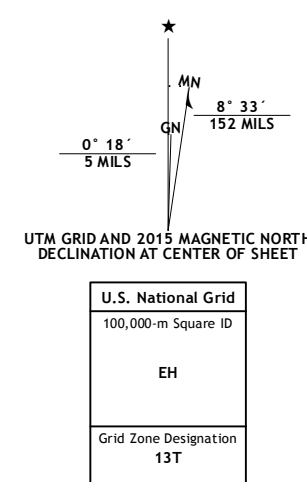
U.S. DEPARTMENT OF THE INTERIOR
U.S. GEOLOGICAL SURVEY



MANVILLE QUADRANGLE
WYOMING-NIOBRARA CO.
7.5-MINUTE SERIES



Produced by the United States Geological Survey
 North American Datum of 1983 (NAD83)
 World Geodetic System of 1984 (WGS84), Projection and
 1 000-meter grid: Universal Transverse Mercator, Zone 13T
 10 000-foot ticks: Wyoming Coordinate System of 1983 (east zone)
 This map is not a legal document. Boundaries may be
 generalized for this map scale. Private lands within government
 reservations may not be shown. Obtain permission before
 entering private lands.
 Imagery: N.A.P., July 2012
 Roads: HERE, ©2013 - 2014
 Names: G.N.I.S., 2015
 Hydrography: National Hydrography Dataset, 2012
 Contours: National Elevation Dataset, 2011
 Boundaries: Multiple sources; see metadata file 1972 - 2015
 Public Land Survey System: B.L.M., 2011



ROAD CLASSIFICATION

Expressway	Local Connector
Secondary Hwy	Local Road
Ramp	4WD
Interstate Route	US Route
	State Route

1	2	3
4	5	6
7	8	

ADJOINING QUADRANGLES

- 1 Flat Top
- 2 Manville NE
- 3 Hat Rock
- 4 Bliss Creek
- 5 Lusk
- 6 Lone Tree Hill
- 7 Silver Springs
- 8 Reynolds Spring

MANVILLE, WY
2015

