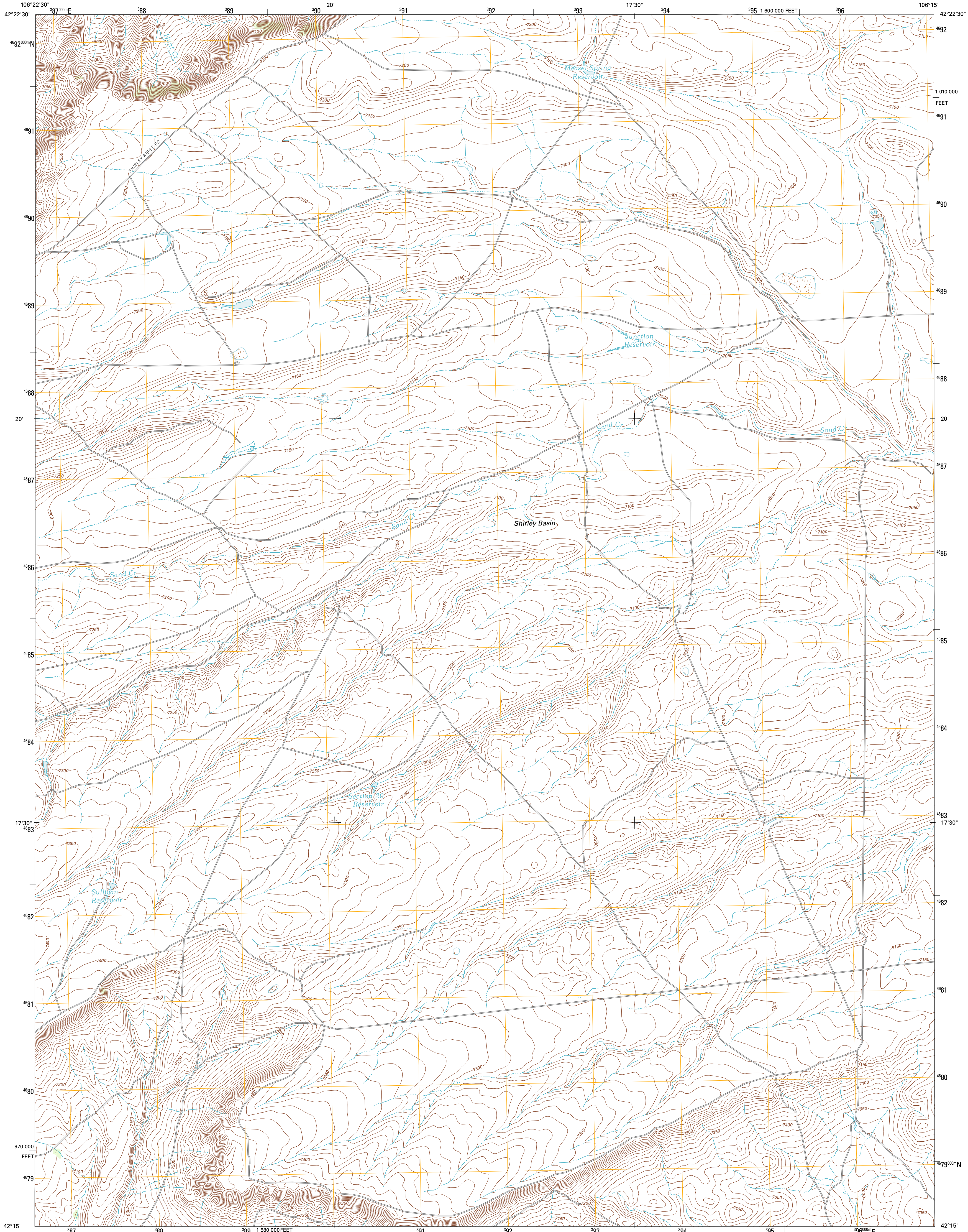




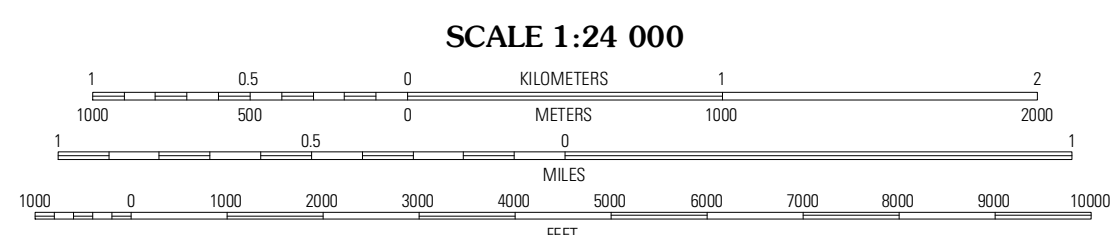
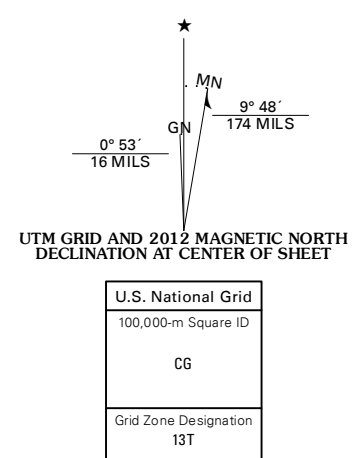
U.S. DEPARTMENT OF THE INTERIOR
U. S. GEOLOGICAL SURVEY



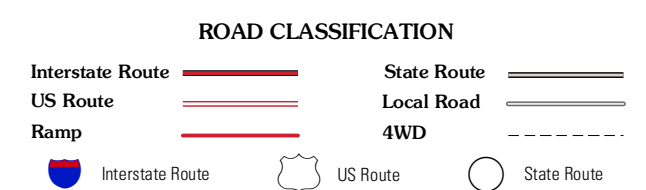
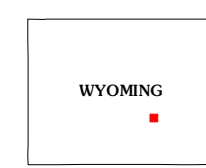
MEASEL SPRING RESERVOIR QUADRANGLE
WYOMING-CARBON CO.
7.5-MINUTE SERIES



Produced by the United States Geological Survey
North American Datum of 1983 (NAD83)
World Geodetic System of 1984 (WGS84). Projection and
1 000-meter grid: Universal Transverse Mercator, Zone 13T
10 000-foot ticks: Wyoming Coordinate System of 1983 (east
central zone)



CONTOUR INTERVAL 10 FEET
NORTH AMERICAN VERTICAL DATUM OF 1988
This map was produced to conform with the
National Geospatial Program US Topo Product Standard, 2011.
A metadata file associated with this product is draft version 0.6.3



ADJOINING 7.5 QUADRANGLES		
Horse Peak	Mad Springs	Bates Creek Reservoir
Wild Irish Reservoir	Measel Spring Reservoir	Moss Agate Reservoir
Pine Hill	Cameron Creek	Walker Draw NW

MEASEL SPRING RESERVOIR, WY
2012