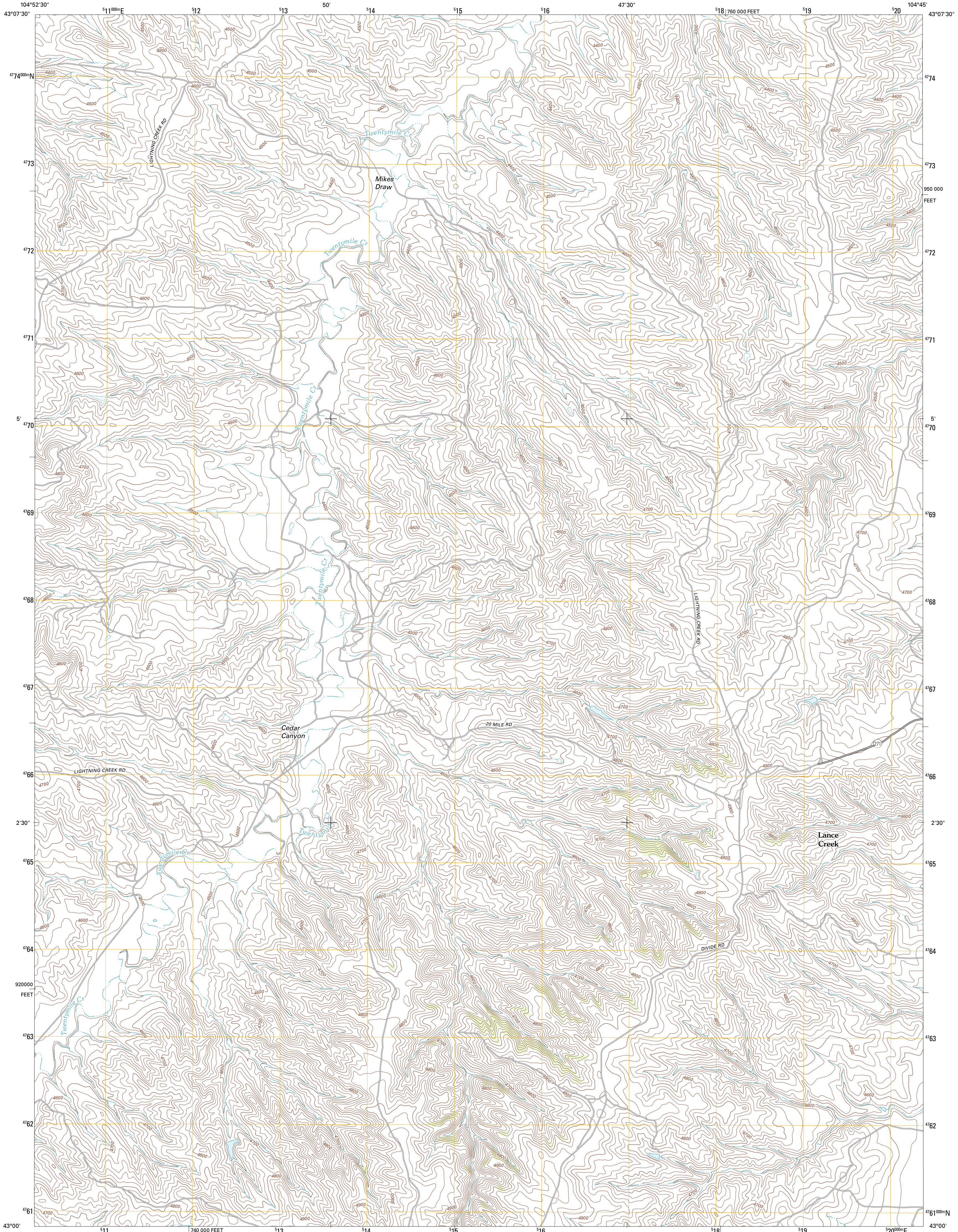




U.S. DEPARTMENT OF THE INTERIOR  
U. S. GEOLOGICAL SURVEY

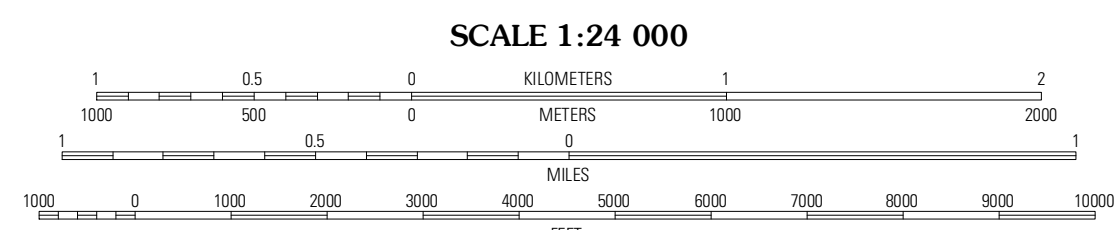
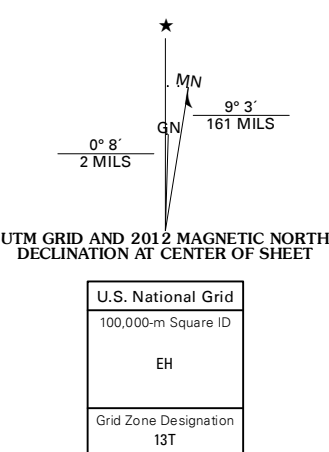


MIKES DRAW QUADRANGLE  
WYOMING-NIOBRARA CO.  
7.5-MINUTE SERIES



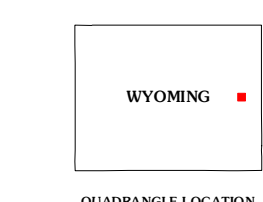
Produced by the United States Geological Survey  
North American Datum of 1983 (NAD83)  
World Geodetic System of 1984 (WGS84). Projection and  
1 000-meter grid: Universal Transverse Mercator, Zone 13T  
10 000-foot ticks: Wyoming Coordinate System of 1983 (east  
zone)

Imagery:.....NAIP, August 2009  
Roads:.....©2006-2011 TomTom  
Names:.....GNIS, 2011  
Hydrography:.....National Hydrography Dataset, 2009  
Contours:.....National Elevation Dataset, 2011  
Boundaries:.....Census, IBWC, IBC, USGS, 1972 - 2010  
Public Land Survey System:.....BLM, 2006 - 2008



CONTOUR INTERVAL 20 FEET  
NORTH AMERICAN VERTICAL DATUM OF 1988

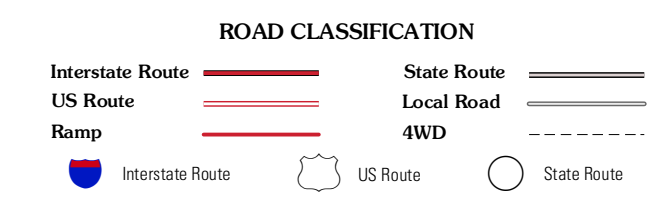
This map was produced to conform with the  
National Geospatial Program US Topo Product Standard, 2011.  
A metadata file associated with this product is draft version 0.6.3



QUADRANGLE LOCATION

Split Hill	Mikes Draw	Lance Creek NW
Split Hill SW	Mikes Draw	Lance Creek
Lost Springs NW	Cooley Draw	Flat Top

ADJOINING 7.5 QUADRANGLES



MIKES DRAW, WY  
2012