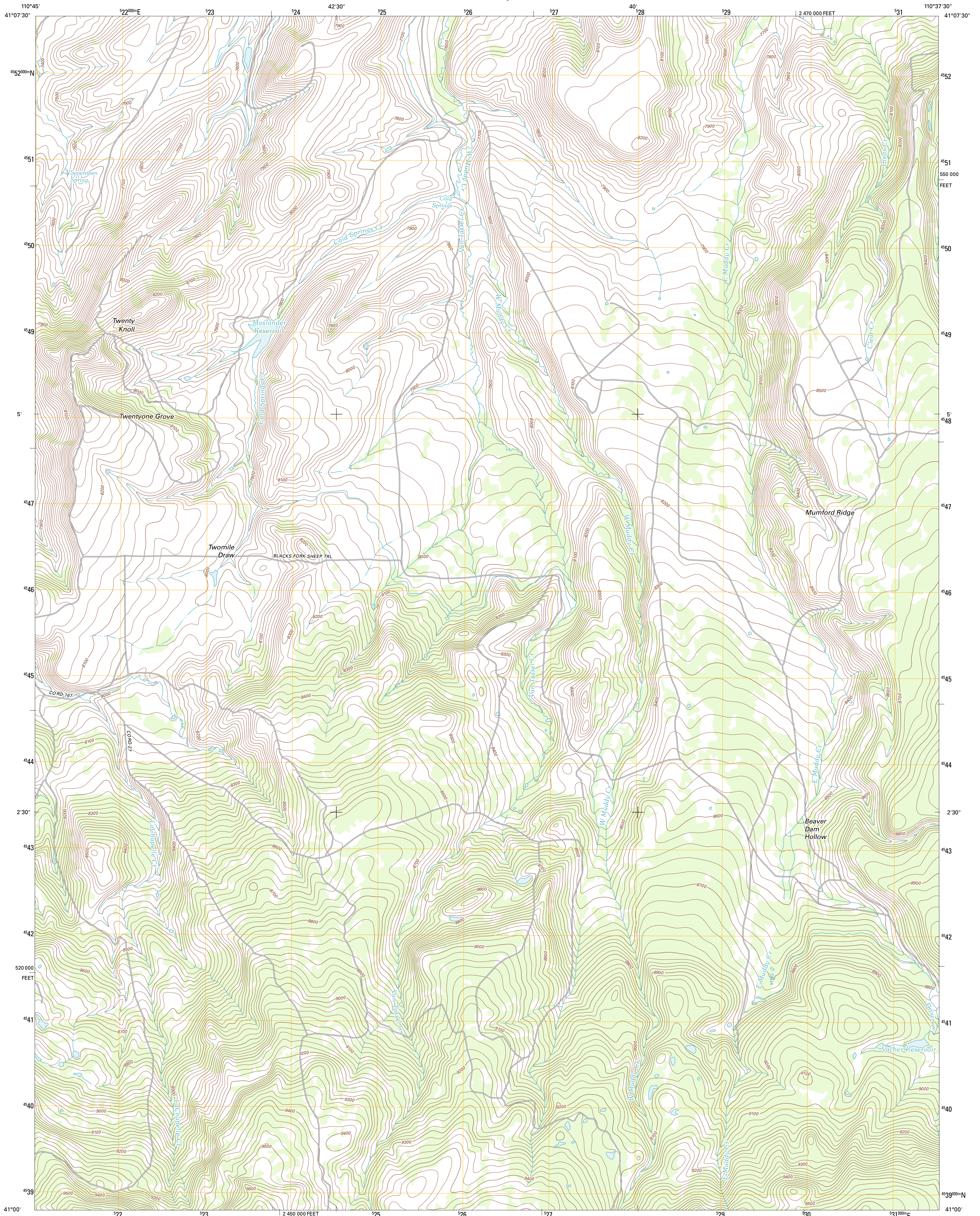




U.S. DEPARTMENT OF THE INTERIOR
U. S. GEOLOGICAL SURVEY

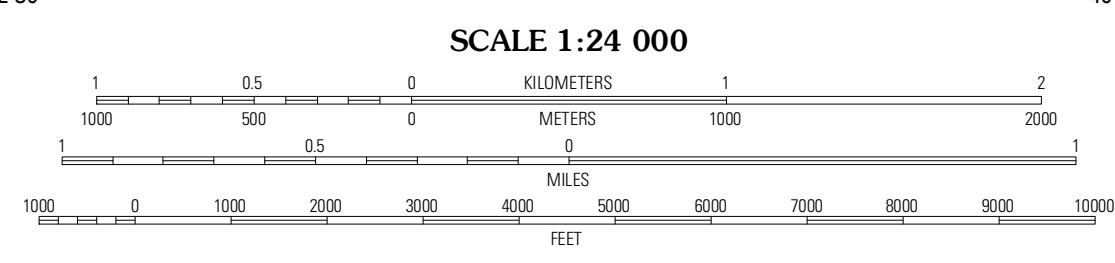
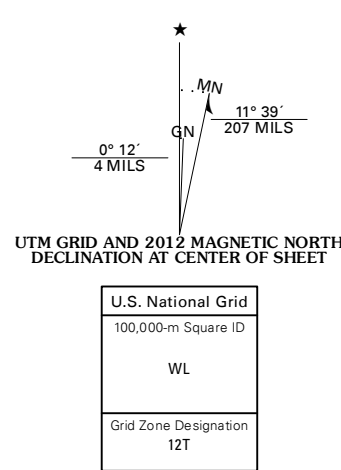


MOSLANDER RESERVOIR QUADRANGLE
WYOMING-UINTA CO.
7.5-MINUTE SERIES

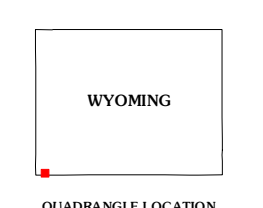


Produced by the United States Geological Survey
North American Datum of 1983 (NAD83)
World Geodetic System of 1984 (WGS84). Projection and
1 000-meter grid: Universal Transverse Mercator, Zone 12T
10 000-foot ticks: Wyoming Coordinate System of 1983
(west zone)

Imagery.....NAIP, July 2009
Roads.....©2006-2011 TomTom
Names.....GNIS, 2011
Hydrography.....National Hydrography Dataset, 2009
Contours.....National Elevation Dataset, 2000
Boundaries.....Census, BWC, BIC, USGS, 1972-2010
Public Land Survey System.....BLM, 2006-2008

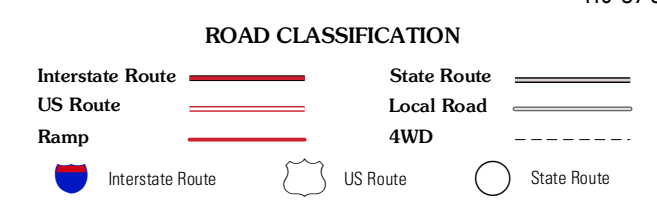


CONTOUR INTERVAL 20 FEET
NORTH AMERICAN VERTICAL DATUM OF 1988
This map was produced to conform with the
National Geospatial Program US Topo Product Standard, 2011.
A metadata file associated with this product is draft version 0.6.3



QUADRANGLE LOCATION

Sulphur Creek Reservoir	Piedmont Reservoir	Hague Creek
Pine Knoll	Moslander Reservoir	Meeks Cabin Reservoir
Deadman Mountain	Elizabeth Mountain	Lyman Lake



MOSLANDER RESERVOIR, WY
2012

ADJOINING 7.5' QUADRANGLES