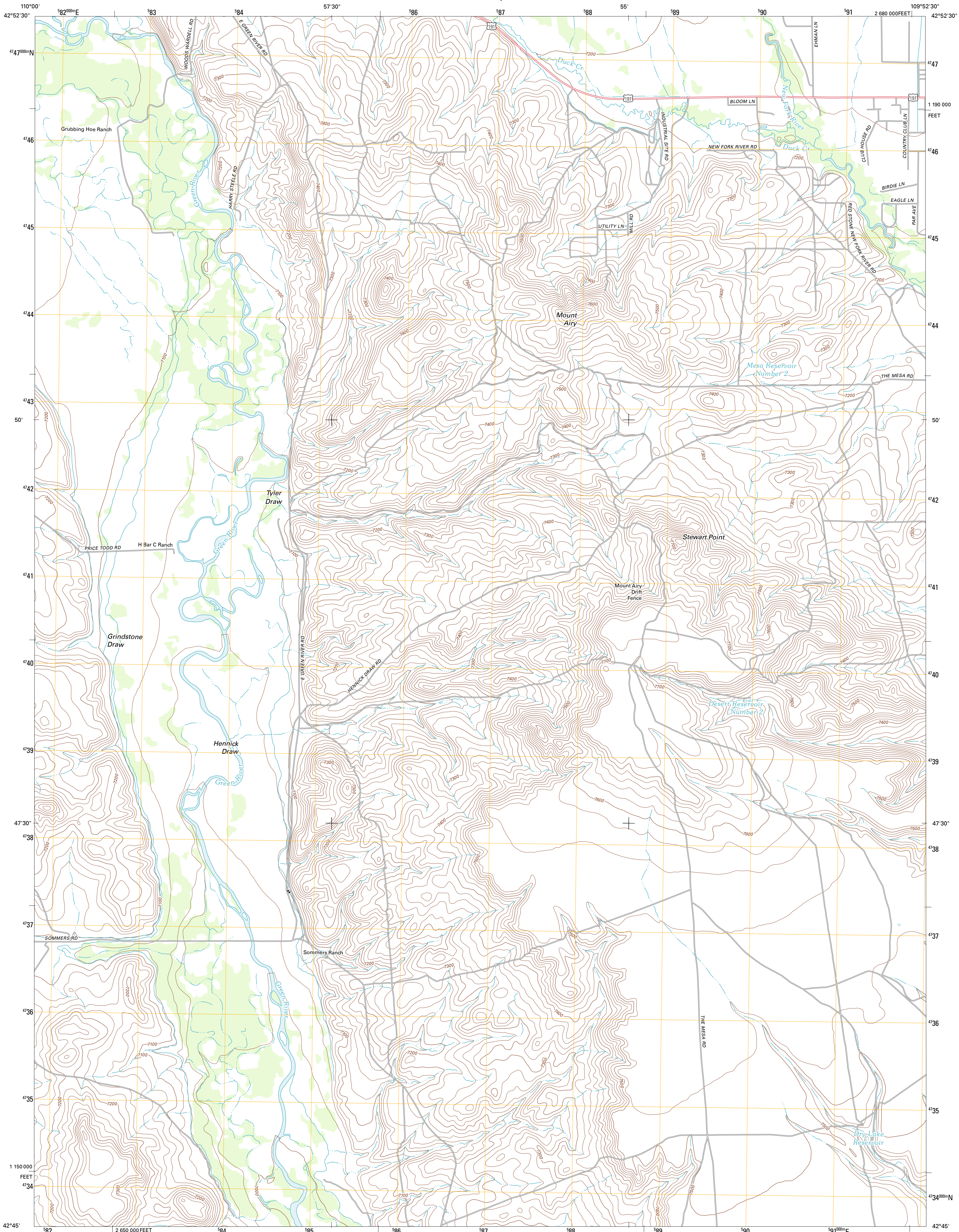




U.S. DEPARTMENT OF THE INTERIOR  
U. S. GEOLOGICAL SURVEY

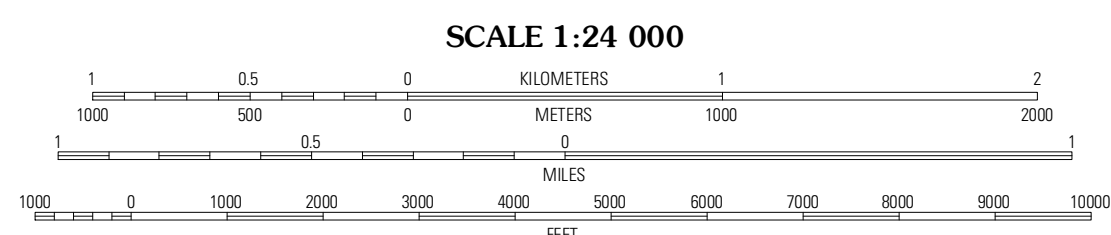
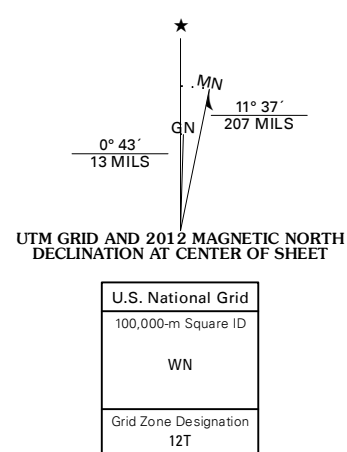


MOUNT AIRY QUADRANGLE  
WYOMING-SUBLETTE CO.  
7.5-MINUTE SERIES

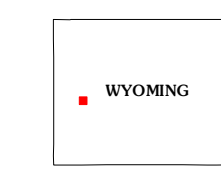


Produced by the United States Geological Survey  
North American Datum of 1983 (NAD83)  
World Geodetic System of 1984 (WGS84). Projection and  
1 000-meter grid: Universal Transverse Mercator, Zone 12T  
10 000-foot ticks: Wyoming Coordinate System of 1983  
(west zone)

Imagery.....N.A.I.P., July 2009  
Roads.....©2006-2011 TomTom  
Names.....GNIS, 2011  
Hydrography.....National Hydrography Dataset, 2009  
Contours.....National Elevation Dataset, 2000  
Boundaries.....Census, IBWC, IBC, USGS, 1972 - 2010  
Public Land Survey System.....BLM, 2006 - 2008



CONTOUR INTERVAL 20 FEET  
NORTH AMERICAN VERTICAL DATUM OF 1988  
This map was produced to conform with the  
National Geospatial Program US Topo Product Standard, 2011.  
A metadata file associated with this product is draft version 0.6.3



QUADRANGLE LOCATION

|                 |             |                      |
|-----------------|-------------|----------------------|
| Daniel Junction | Cora        | Fremont Lake South   |
| Daniel          | Mount Airy  | Pinedale             |
| Ball Island     | Mesa Spring | Two Buttes Reservoir |

ROAD CLASSIFICATION

|                  |             |             |
|------------------|-------------|-------------|
| Interstate Route | State Route | Local Road  |
| US Route         | 4WD         |             |
| Ramp             | US Route    | State Route |

MOUNT AIRY, WY  
2012

ADJOINING 7.5' QUADRANGLES