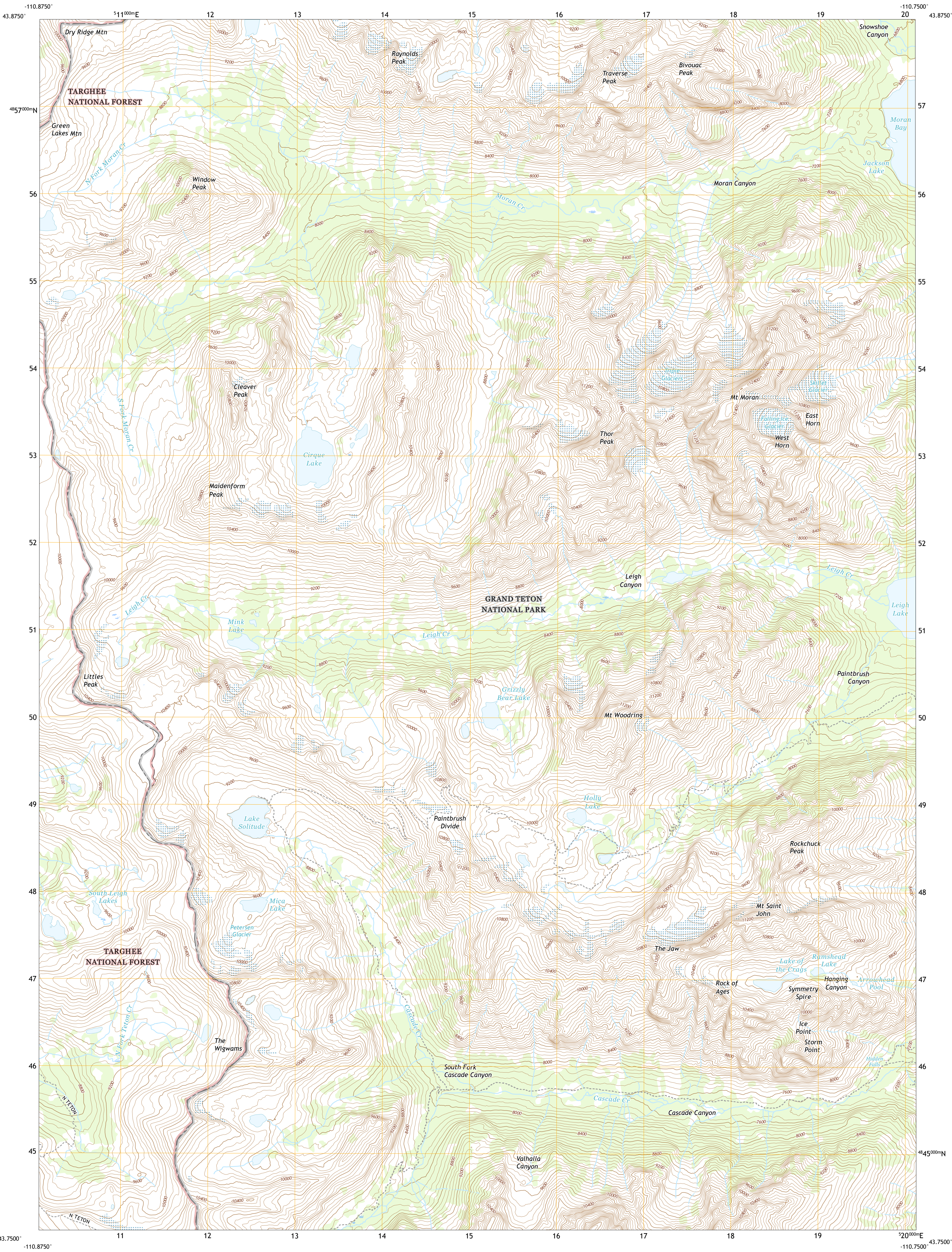




U.S. DEPARTMENT OF THE INTERIOR
U.S. GEOLOGICAL SURVEY

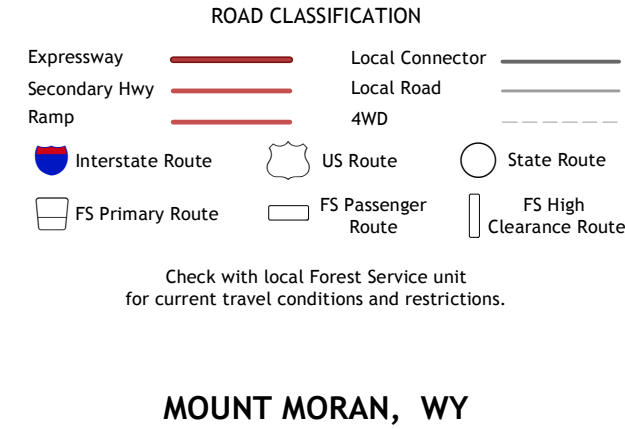
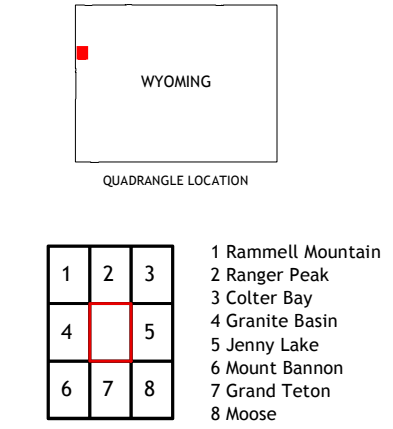
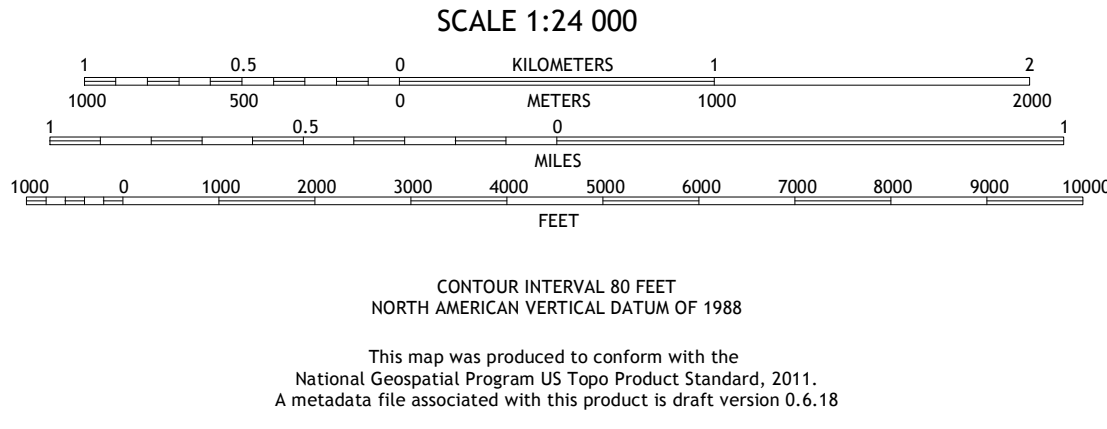
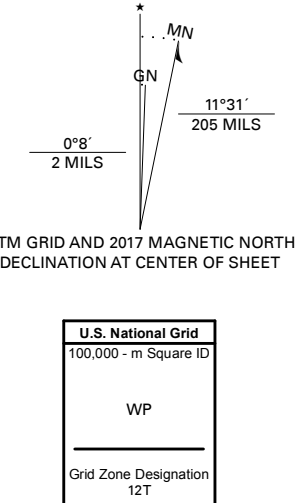


MOUNT MORAN QUADRANGLE
WYOMING - TETON COUNTY
7.5-MINUTE SERIES



Produced by the United States Geological Survey
North American Datum of 1983 (NAD83)
World Geodetic System of 1984 (WGS84). Projection and
1 000-meter grid-Universal Transverse Mercator, Zone 12T
This map is not a legal document. Boundaries may be
generalized for this map scale. Private lands within government
reservations may not be shown. Obtain permission before
entering private lands.

Imagery.....NAIP, September 2015 - November 2015
Roads.....U.S. Census Bureau, Not Available
Roads within US Forest Service Lands.....FSTopo Data
Names.....with limited Forest Service updates, Not Available
Contours.....GNS, 1979 - 2017
Hydrography.....National Hydrography Dataset, 2001 - 2017
Boundaries.....National Elevation Dataset, 1999 - 2015
Public Land Survey System.....BLM, 2015
Wetlands.....FWS National Wetlands Inventory, 1983



MOUNT MORAN, WY
2018

