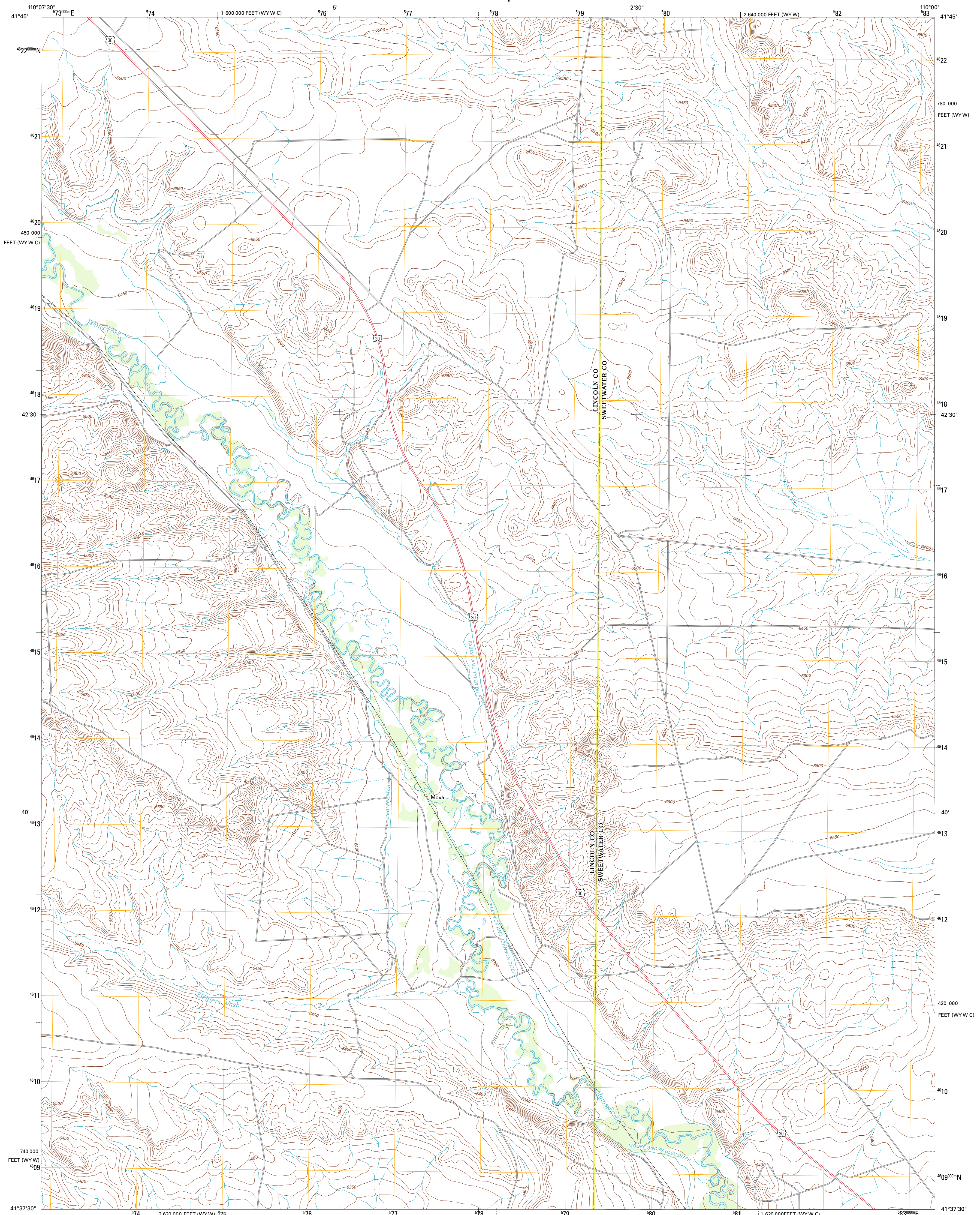




U.S. DEPARTMENT OF THE INTERIOR
U. S. GEOLOGICAL SURVEY

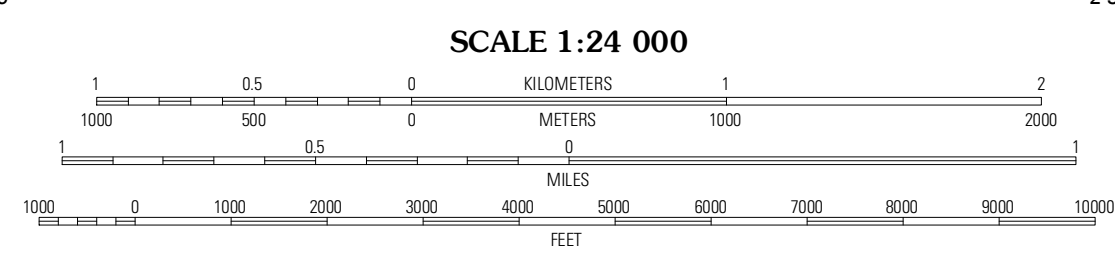
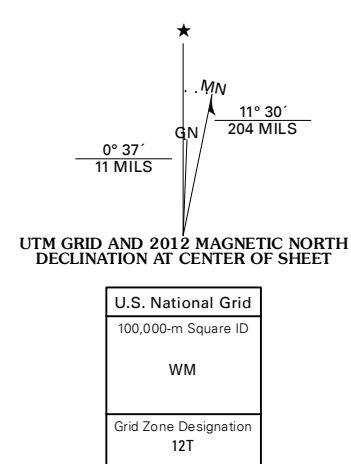


MOXA QUADRANGLE
WYOMING
7.5-MINUTE SERIES



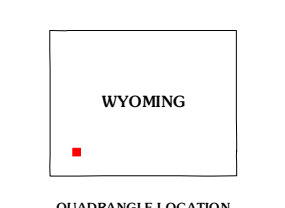
Produced by the United States Geological Survey
North American Datum of 1983 (NAD83)
World Geodetic System of 1984 (WGS84). Projection and
1 000 meter grid: Universal Transverse Mercator, Zone 12T
10 000-foot ticks: Wyoming Coordinate System of 1983
(west and west central zones)

Imagery: N.A.I.P., July 2009
Roads: ©2006-2011 TomTom
Names: ©2006-2011 TomTom
Hydrography: National Hydrography Dataset, 2009
Contours: National Elevation Dataset, 2000
Boundaries: Census, IBV, IBC, USGS, 1972 - 2010
Public Land Survey System: BLM, 2006 - 2008



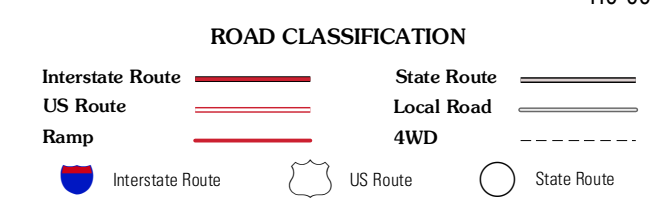
CONTOUR INTERVAL 10 FEET
NORTH AMERICAN VERTICAL DATUM OF 1988

This map was produced to conform with the
National Geospatial Program US Topo Product Standard, 2011.
A metadata file associated with this product is draft version 0.6.3



QUADRANGLE LOCATION

Cow Hollow Creek	Fontenelle SE	Whiskey Buttes
Church Butte NW	Moxa	Sevensmile Gulch
Church Butte	Vernie	Granger



MOXA, WY
2012

ADJOINING 7.5 QUADRANGLES