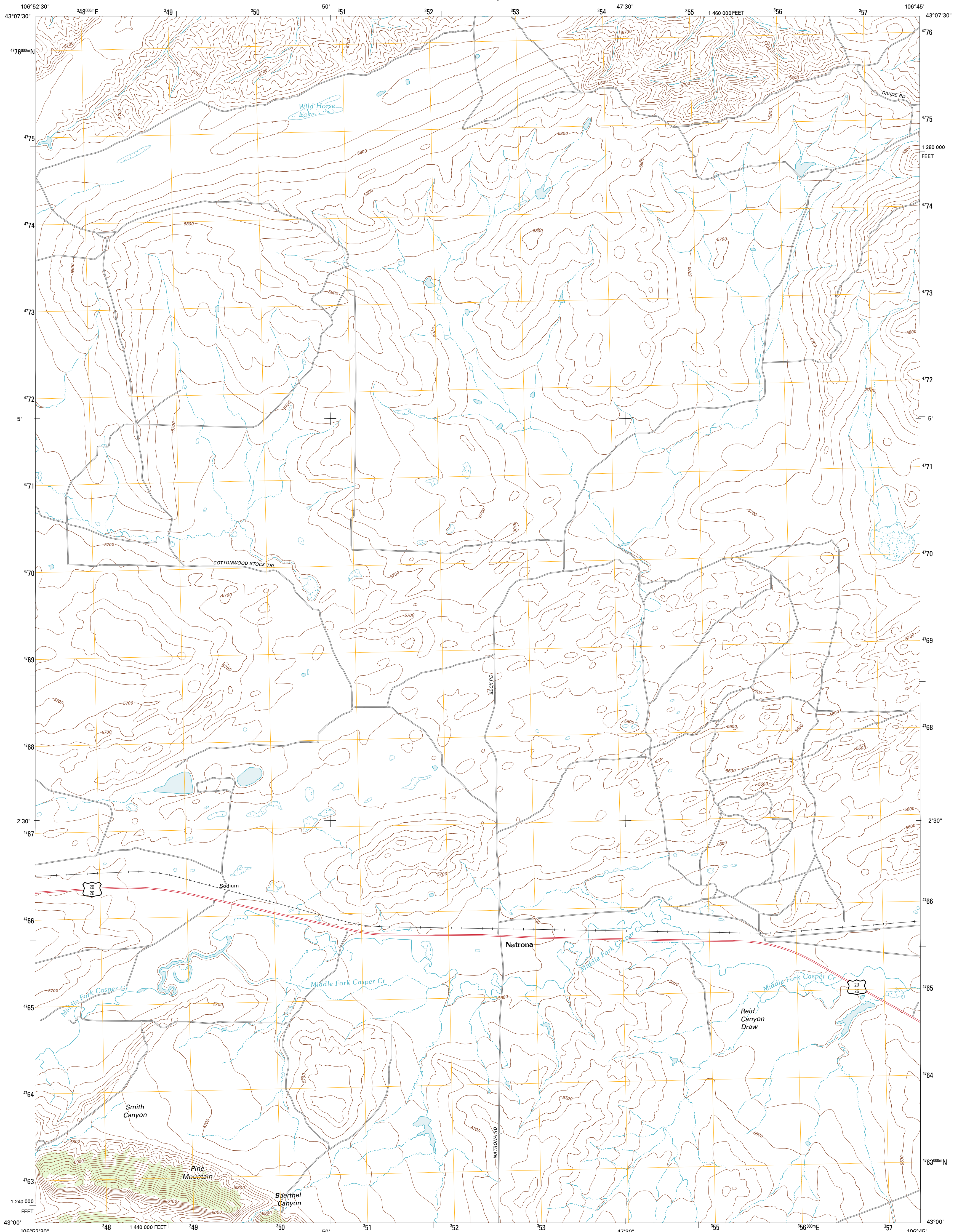




U.S. DEPARTMENT OF THE INTERIOR  
U. S. GEOLOGICAL SURVEY

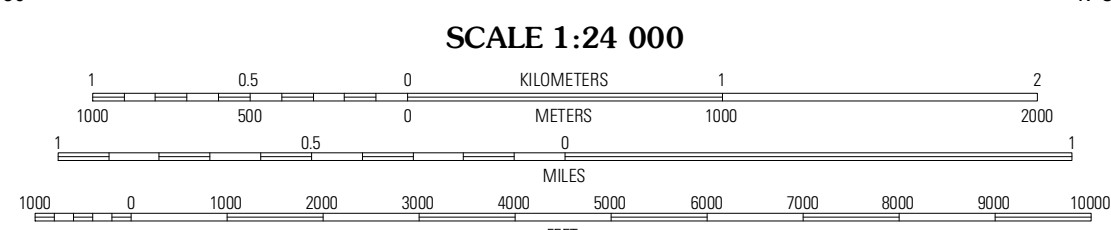
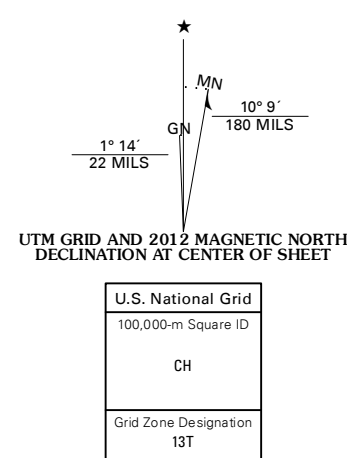


NATRONA QUADRANGLE  
WYOMING-NATRONA CO.  
7.5-MINUTE SERIES



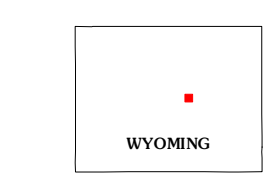
Produced by the United States Geological Survey  
North American Datum of 1983 (NAD83)  
World Geodetic System of 1984 (WGS84). Projection and  
1 000-meter grid: Universal Transverse Mercator, Zone 13T  
10 000-foot ticks: Wyoming Coordinate System of 1983 (east  
central zone)

Imagery.....NAIP, August 2009  
Roads.....©2006-2011, TomTom  
Names.....GNS, 2011  
Hydrography.....National Hydrography Dataset, 2009  
Contours.....National Elevation Dataset, 2009  
Boundaries.....Census, IBWC, IBC, USGS, 1972 - 2010  
Public Land Survey System.....BLM, 2006 - 2008



CONTOUR INTERVAL 20 FEET  
NORTH AMERICAN VERTICAL DATUM OF 1988

This map was produced to conform with the  
National Geospatial Program US Topo Product Standard, 2011.  
A metadata file associated with this product is draft version 0.6.3



QUADRANGLE LOCATION

Cass Galk's Reservoir	Anderson Draw	Reynolds Reservoir
Powder River	Natrona	Burlington Lake
Square Top Butte	Reid Canyon	Emigrant Gap NW

ROAD CLASSIFICATION

Interstate Route	State Route
US Route	Local Road
Ramp	4WD

NATRONA, WY  
2012

ADJOINING 7.5' QUADRANGLES