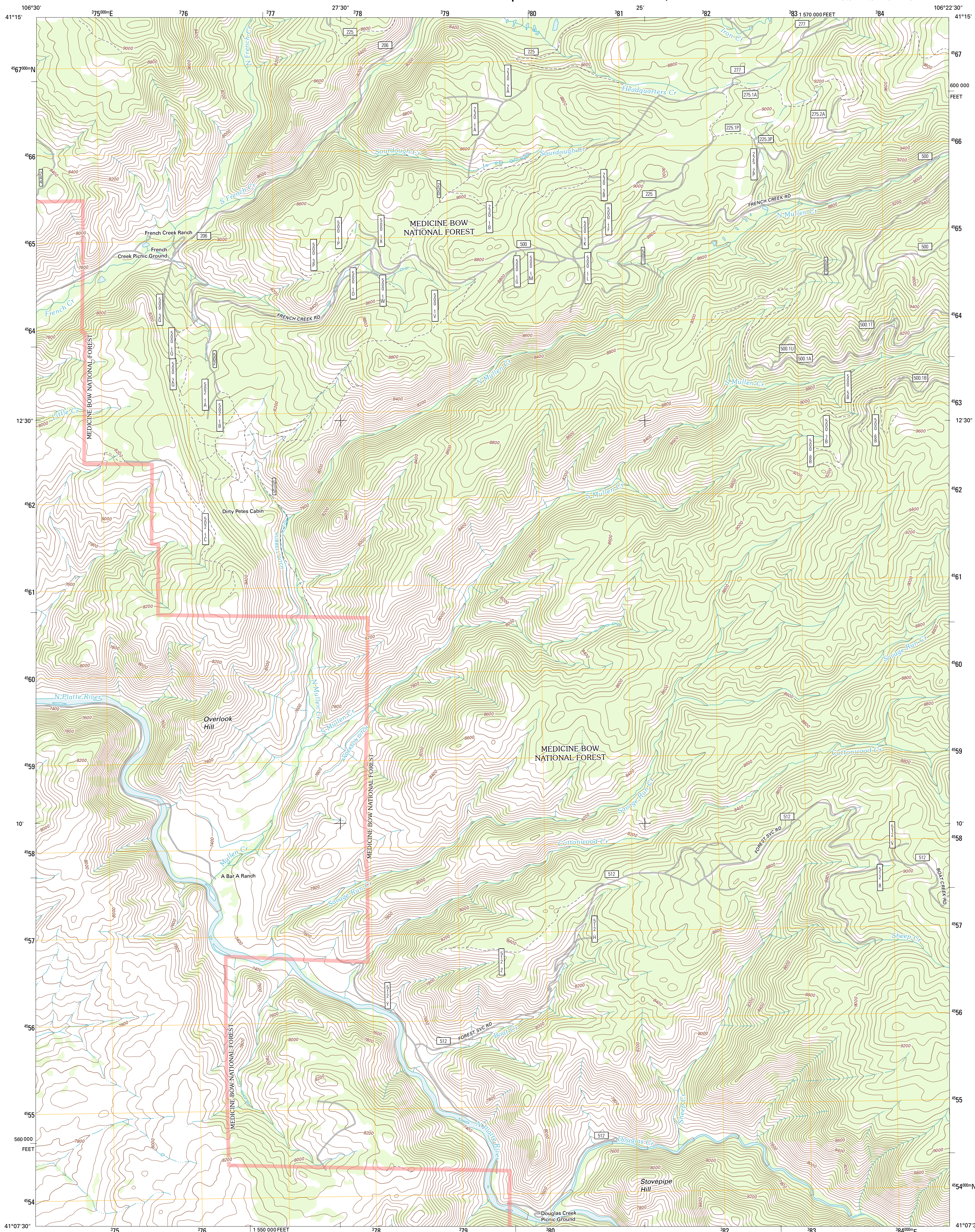




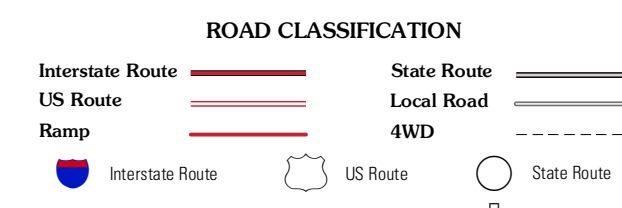
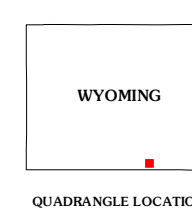
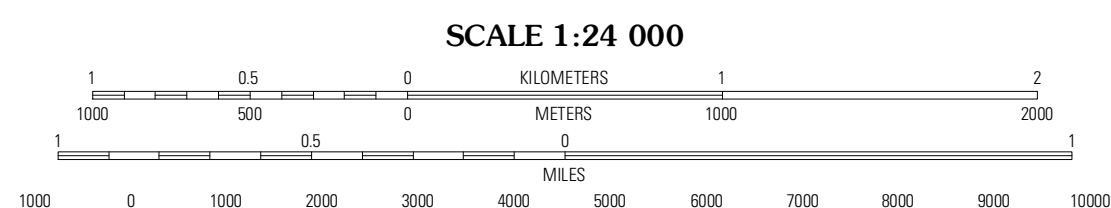
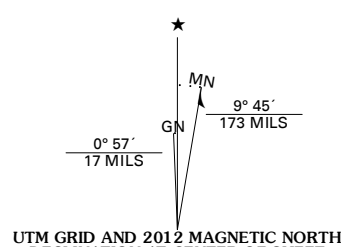
U.S. DEPARTMENT OF THE INTERIOR
U. S. GEOLOGICAL SURVEY



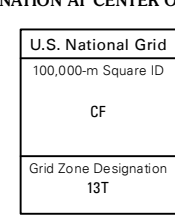
OVERLOOK HILL QUADRANGLE
WYOMING-CARBON CO.
7.5-MINUTE SERIES



Produced by the United States Geological Survey
North American Datum of 1983 (NAD83)
World Geodetic System of 1984 (WGS84). Projection and
1 000-meter grid: Universal Transverse Mercator, Zone 13T
10 000-foot ticks: Wyoming Coordinate System of 1983 (east
central zone)



Imagery: N.A.P., August 2009
Roads: ©2006-2011 TomTom
Roads within US Forest Service Lands, with limited Forest Service updates, 2009
Names: GNIS, 2011
Hydrography: National Hydrography Dataset, 2009
Contours: National Elevation Dataset, 2006
Boundaries: Census, IBWC, IBC, USGS, 1972 - 2010
Public Land Survey System: BLM, 2006 - 2008



CONTOUR INTERVAL 40 FEET
NORTH AMERICAN VERTICAL DATUM OF 1988

This map was produced to conform with the
National Geospatial Program US Topo Product Standard, 2011.
A metadata file associated with this product is draft version 0.6.3

Ryan Park	Phantom Lake	Medicine Bow Peak
Barcus Peak	Overlook Hill	Keystone
Trent Creek	Elkhorn Point	Horatio Rock

ADJOINING 7.5' QUADRANGLES

Check with local Forest Service unit
for current travel conditions and restrictions.

OVERLOOK HILL, WY
2012