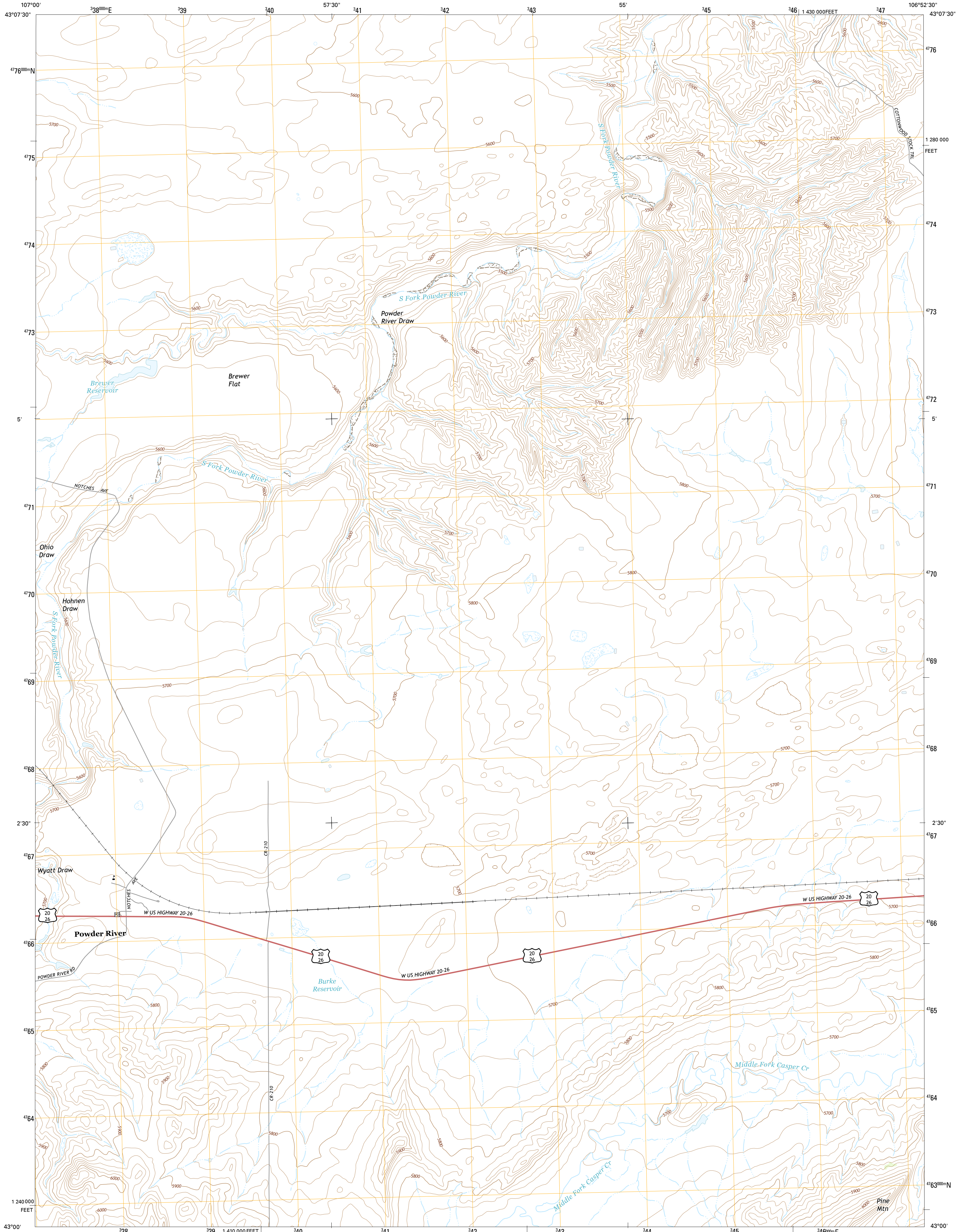




U.S. DEPARTMENT OF THE INTERIOR
U.S. GEOLOGICAL SURVEY



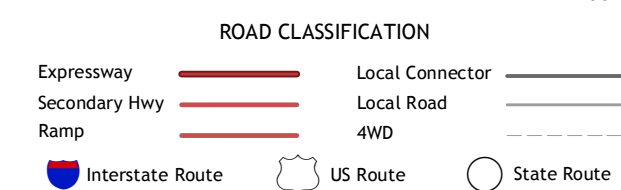
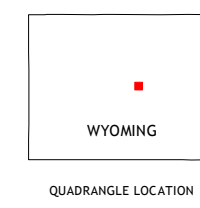
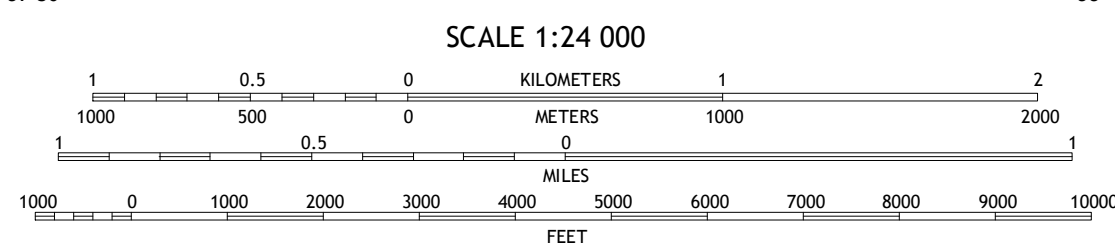
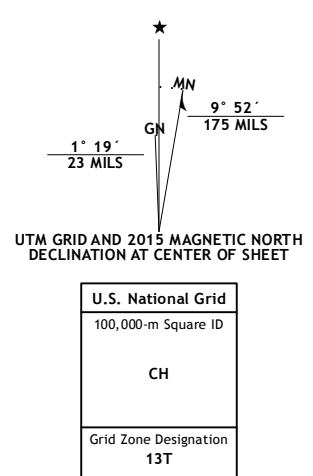
POWDER RIVER QUADRANGLE
WYOMING-NATRONA CO.
7.5-MINUTE SERIES



Produced by the United States Geological Survey
North American Datum of 1983 (NAD83)
World Geodetic System of 1984 (WGS84), Projection and
1 000-meter grid; Universal Transverse Mercator, Zone 13T
10 000-foot ticks: Wyoming Coordinate System of 1983 (east
central zone)

This map is not a legal document. Boundaries may be
generalized for this map scale. Private lands within government
reservations may not be shown. Obtain permission before
entering private lands.

Imagery: N.A.I.P. August 2012
Roads: HERE, ©2013 - 2014
Names: G.N.I.S., 2015
Hydrography: National Hydrography Dataset, 2012
Contours: National Elevation Dataset, 2009
Boundaries: Multiple sources; see metadata file 1972 - 2015
Public Land Survey System: B.L.M., 2011



CONTOUR INTERVAL 20 FEET
NORTH AMERICAN VERTICAL DATUM OF 1988

This map was produced to conform with the
National Geospatial Program US Topo Product Standard, 2011.
A metadata file associated with this product is draft version 0.6.18

1	2	3
4	5	6
7	8	

ADJOINING QUADRANGLES

POWDER RIVER, WY
2015

