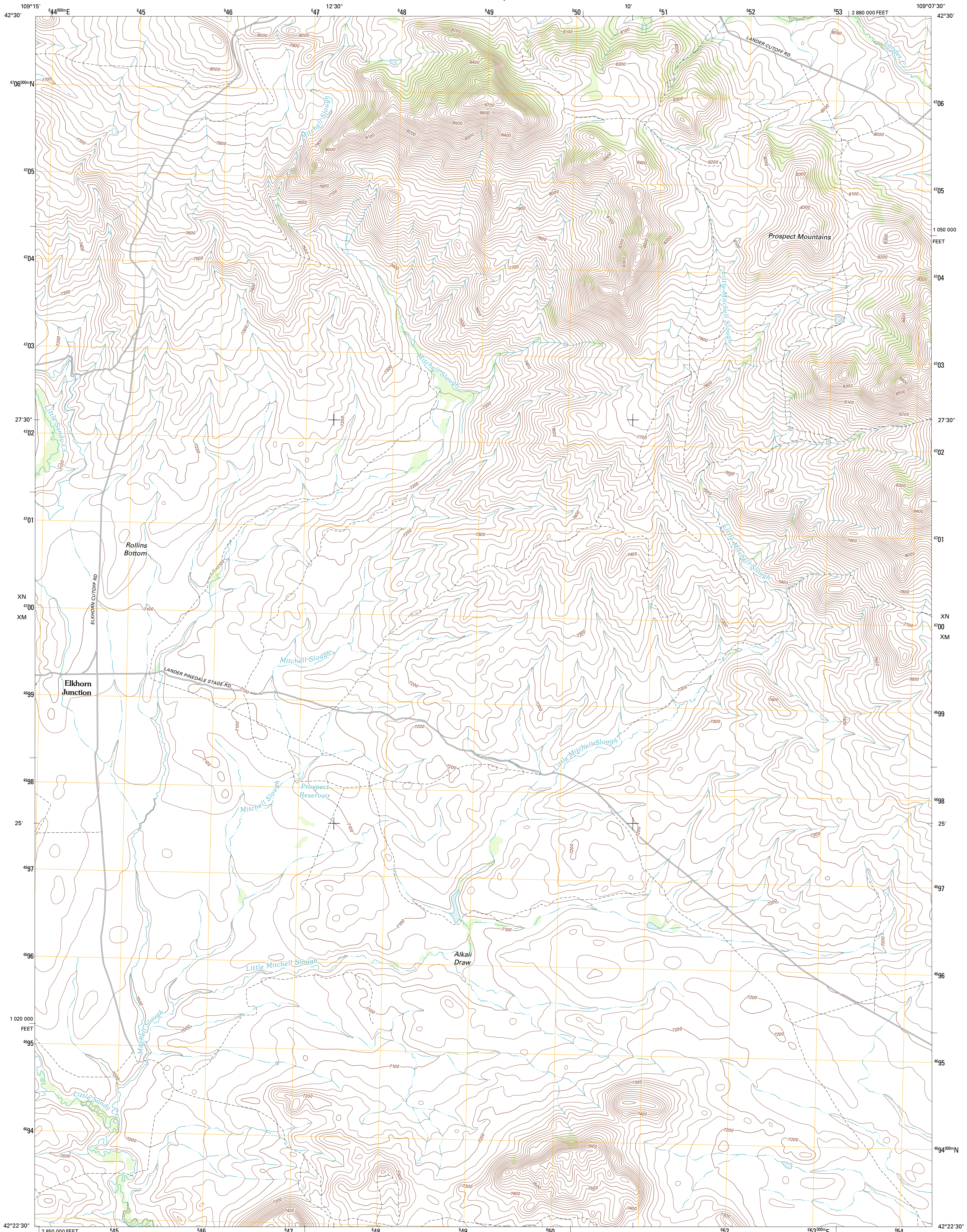




U.S. DEPARTMENT OF THE INTERIOR
U. S. GEOLOGICAL SURVEY

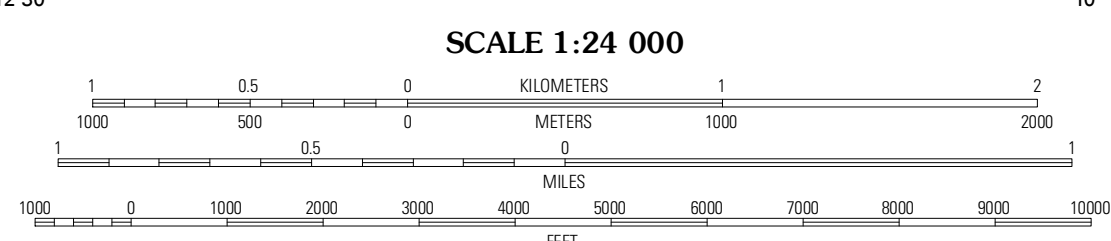
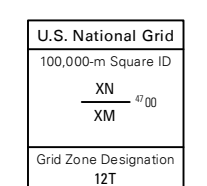
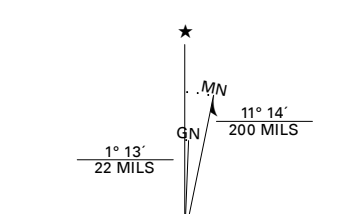


PROSPECT MOUNTAINS QUADRANGLE
WYOMING-SUBLETTE CO.
7.5-MINUTE SERIES



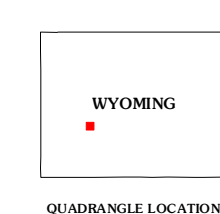
Produced by the United States Geological Survey
North American Datum of 1983 (NAD83)
World Geodetic System of 1984 (WGS84). Projection and
1 000-meter grid: Universal Transverse Mercator, Zone 12T
10 000-foot ticks: Wyoming Coordinate System of 1983
(west zone)

Imagery.....N.A.P., August 2009
Roads.....©2006-2011 TomTom
Names.....GNSS, 2011
Hydrography.....National Hydrography Dataset, 2009
Contours.....National Elevation Dataset, 2000
Boundaries.....Census, BWC, BIC, USGS, 1972 - 2010
Public Land Survey System.....BLM, 2006 - 2008



CONTOUR INTERVAL 20 FEET
NORTH AMERICAN VERTICAL DATUM OF 1988

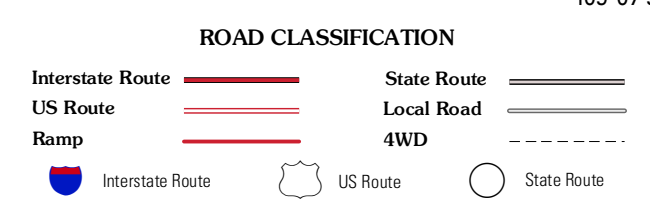
This map was produced to conform with the
National Geospatial Program US Topo Product Standard, 2011.
A metadata file associated with this product is draft version 0.6.3



QUADRANGLE LOCATION

| | | |
|------------------------|---------------------|----------------------|
| Leckie | Jensen Meadows | Sweetwater Needles |
| Leckie Reservoir | Prospect Mountains | Halls Meadow Spring |
| Big Sandy Reservoir SE | Parting of the Ways | Hay Meadow Reservoir |

ADJOINING 7.5 QUADRANGLES



PROSPECT MOUNTAINS, WY
2012