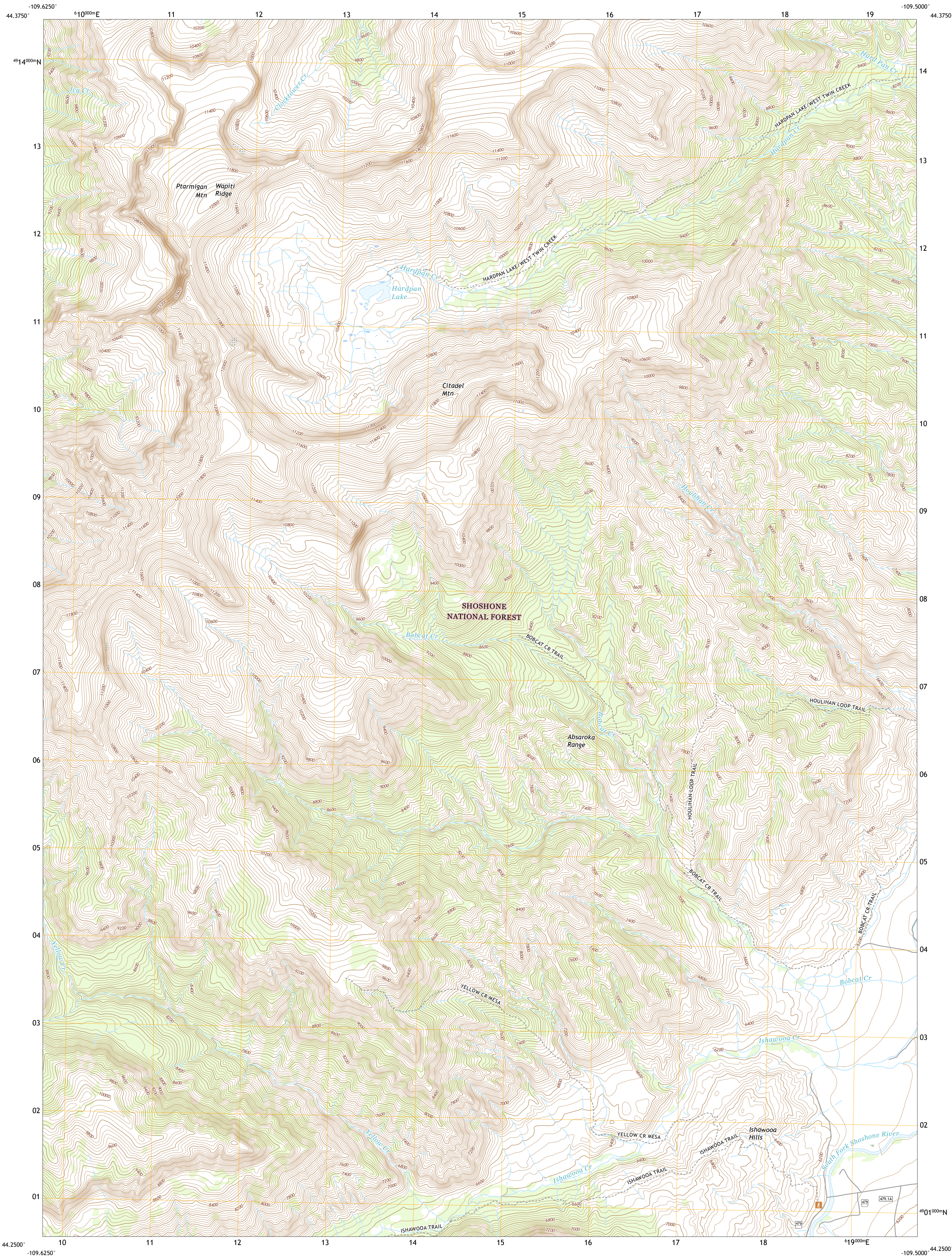




U.S. DEPARTMENT OF THE INTERIOR  
U.S. GEOLOGICAL SURVEY



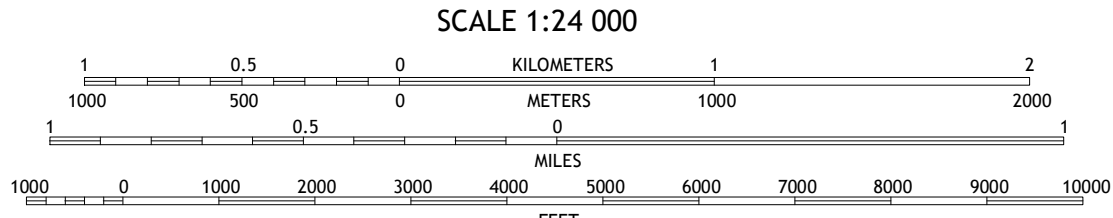
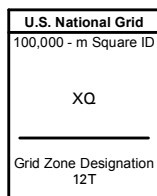
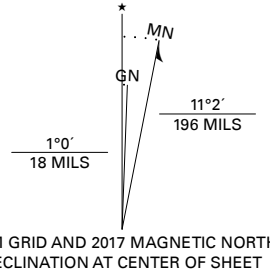
PTARMIGAN MOUNTAIN QUADRANGLE  
WYOMING - PARK COUNTY  
7.5-MINUTE SERIES



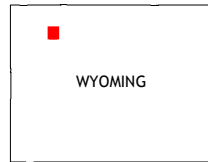
Produced by the United States Geological Survey

North American Datum of 1983 (NAD83)  
World Geodetic System of 1984 (WGS84). Projection and  
1 000-meter grid: Universal Transverse Mercator, Zone 12T  
This map is not a legal document. Boundaries may be  
generalized for this map scale. Private lands within government  
reservations may not be shown. Obtain permission before  
entering private lands.

Imagery.....NAIP, September 2015 - November 2015  
Roads.....U.S. Census Bureau, Not Available  
within US Forest Service Lands.....FSTopo Data  
with limited Forest Service updates, 2017  
Names.....GNIS, 1979  
Hydrography.....National Hydrography Dataset, 2002 - 2016  
Contours.....National Elevation Dataset, 2000  
Boundaries.....Multiple sources, see metadata file, 2015  
Public Land Survey System.....BLM, 2017  
Wetlands.....FWS National Wetlands Inventory 1983 - 1984



CONTOUR INTERVAL 40 FEET  
NORTH AMERICAN VERTICAL DATUM OF 1988  
This map was produced to conform with the  
National Geospatial Program US Topo Product Standard, 2011.  
A metadata file associated with this product is draft version 0.6.18



1	2	3
4	5	6
7	8	9

1 Clayton Mountain  
2 Flag Peak  
3 Wapiti  
4 Lake Creek  
5 Twin Creek  
6 Clouds Home Peak  
7 Valley  
8 Aldrich Basin

ROAD CLASSIFICATION		
Expressway	Local Connector	
Secondary Hwy	Local Road	
Ramp	4WD	
Interstate Route	US Route	State Route
FS Primary Route	FS Passenger Route	FS High Clearance Route

Check with local Forest Service unit  
for current travel conditions and restrictions.

PTARMIGAN MOUNTAIN, WY  
2017

