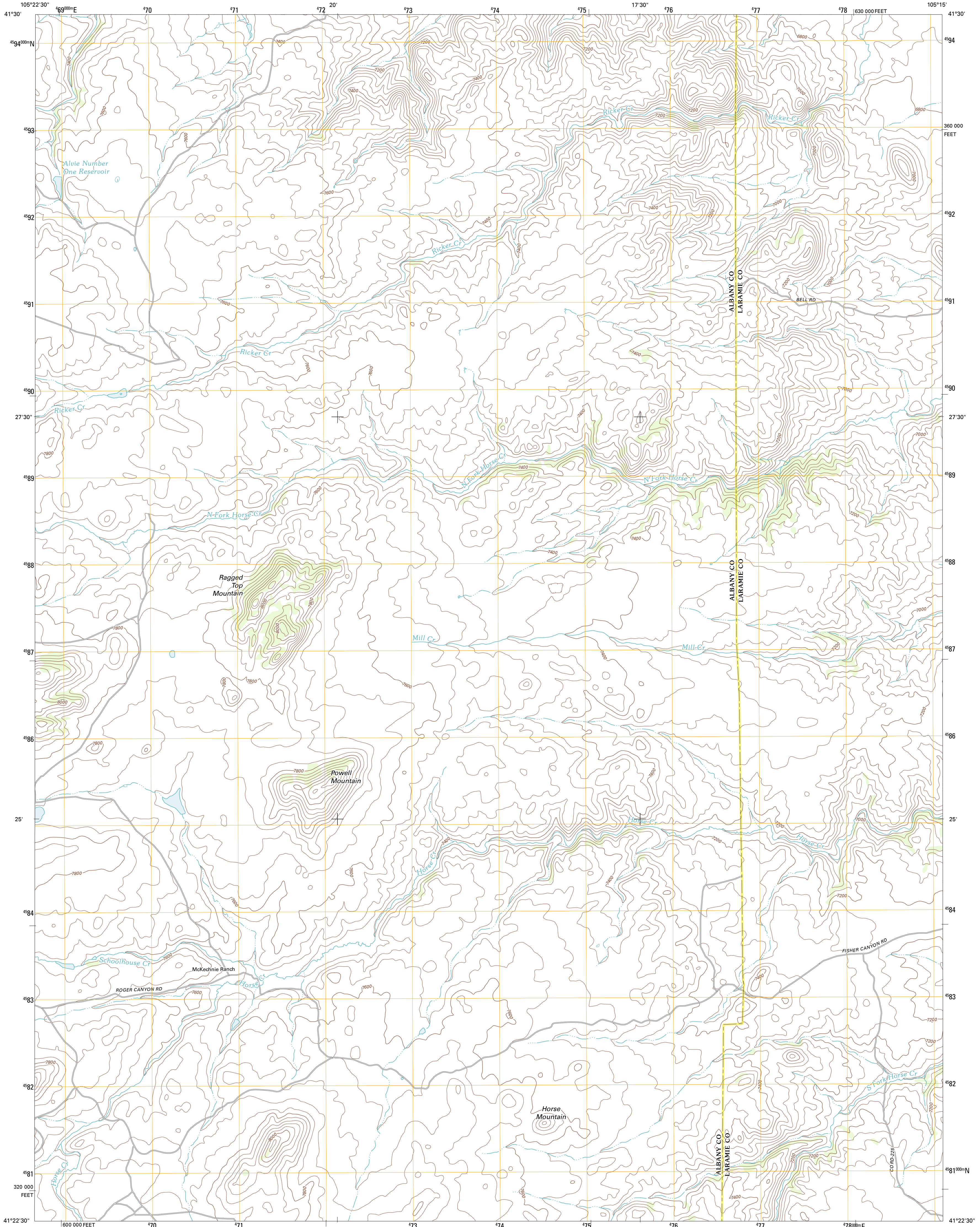




U.S. DEPARTMENT OF THE INTERIOR
U. S. GEOLOGICAL SURVEY

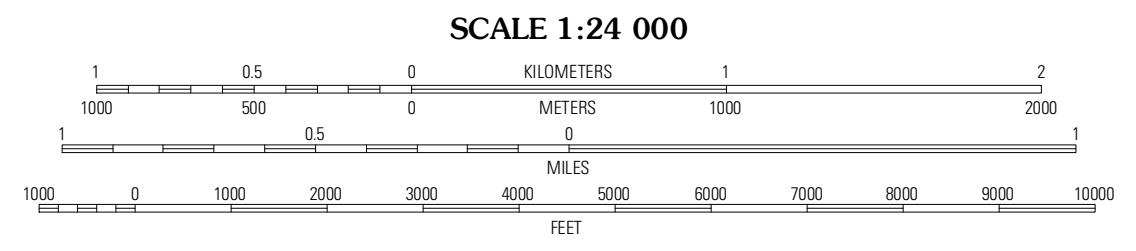
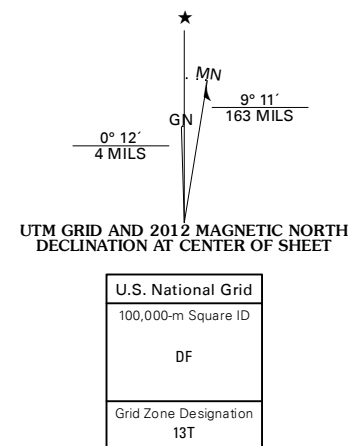


RAGGED TOP MOUNTAIN QUADRANGLE
WYOMING
7.5-MINUTE SERIES



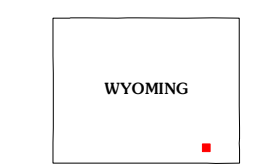
Produced by the United States Geological Survey
North American Datum of 1983 (NAD83)
World Geodetic System of 1984 (WGS84). Projection and
1 000-meter grid: Universal Transverse Mercator, Zone 13T
10 000-foot ticks: Wyoming Coordinate System of 1983 (east zone)

Imagery: NAIP, August 2009
Roads: ©2006-2011 TomTom
Names: ©2006-2011 TomTom
Hydrography: National Hydrography Dataset, 2009
Contours: National Elevation Dataset, 2007
Boundaries: Census, BWC, IBC, USGS, 1972 - 2010
Public Land Survey System: BLM, 2006 - 2008



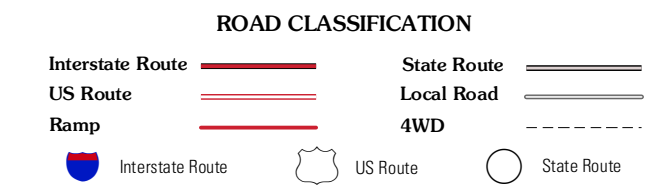
CONTOUR INTERVAL 40 FEET
NORTH AMERICAN VERTICAL DATUM OF 1988

This map was produced to conform with the National Geospatial Program US Topo Product Standard, 2011. A metadata file associated with this product is draft version 0.6.3



QUADRANGLE LOCATION

| | | |
|----------------|---------------------|-------------|
| Belly Mountain | Goat Mountain | Farthing |
| King Mountain | Ragged Top Mountain | Horse Creek |
| Pilot Hill | Green Top Mountain | Islay |



RAGGED TOP MOUNTAIN, WY
2012

ADJOINING 7.5' QUADRANGLES