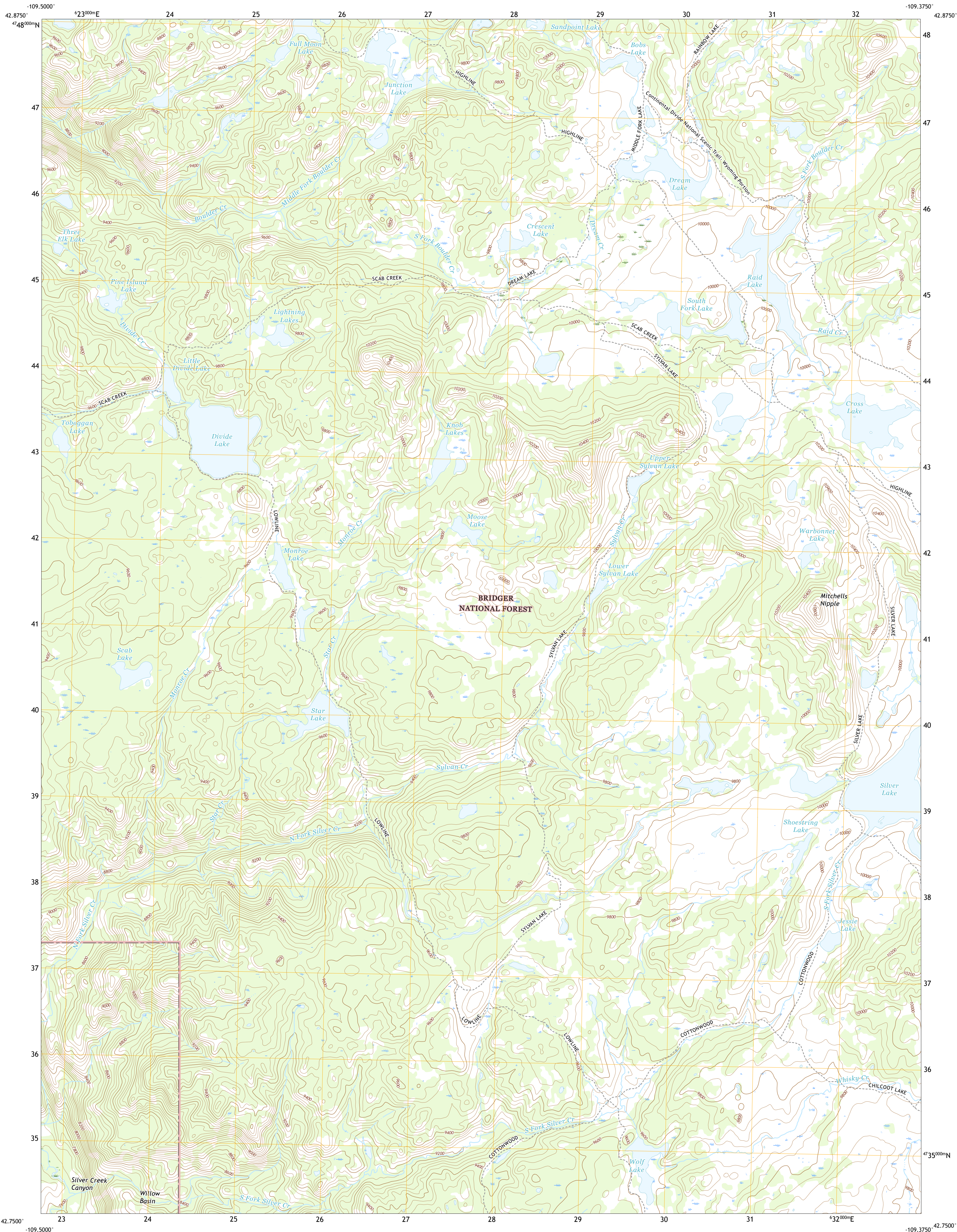




U.S. DEPARTMENT OF THE INTERIOR  
U.S. GEOLOGICAL SURVEY



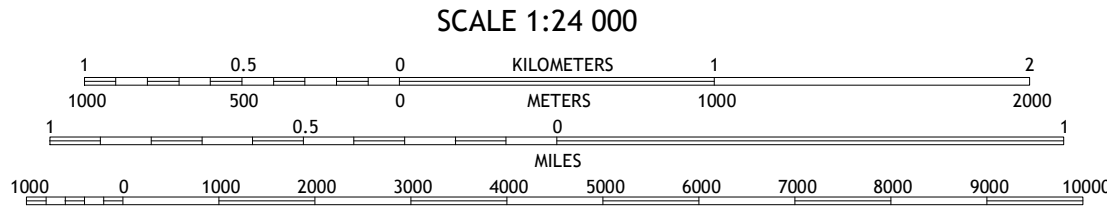
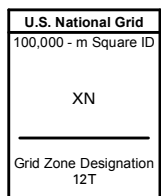
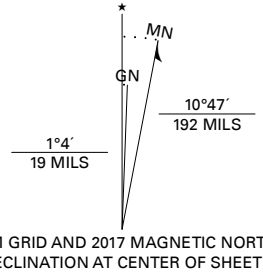
RAID LAKE QUADRANGLE  
WYOMING - SUBLETTE COUNTY  
7.5-MINUTE SERIES



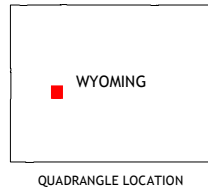
Produced by the United States Geological Survey

North American Datum of 1983 (NAD83)  
World Geodetic System of 1984 (WGS84). Projection and  
1 000-meter grid: Universal Transverse Mercator, Zone 12T  
This map is not a legal document. Boundaries may be  
generalized for this map scale. Private lands within government  
reservations may not be shown. Obtain permission before  
entering private lands.

Imagery.....NAIP, September 2015 - November 2015  
Roads.....U.S. Census Bureau, Not Available  
Roads within US Forest Service Lands.....FSTopo Data  
with limited Forest Service updates, Not Available  
Names.....GNIS, 1979 - 1994  
Hydrography.....National Hydrography Dataset, 2001 - 2016  
Contours.....National Elevation Dataset, 2000  
Boundaries.....Multiple sources; see metadata file  
Public Land Survey System.....BLM, 2017  
Wetlands.....FWS National Wetlands Inventory, 1983



CONTOUR INTERVAL 40 FEET  
NORTH AMERICAN VERTICAL DATUM OF 1988  
This map was produced to conform with the  
National Geospatial Program US Topo Product Standard, 2011.  
A metadata file associated with this product is draft version 0.6.18



1	2	3
4	5	6
7	8	9

1 Horseshoe Lake  
2 Halls Mountain  
3 Roberts Mountain  
4 Scab Creek  
5 Mount Boreneville  
6 Fremont Butte  
7 Pocket Creek Lake  
8 Big Sandy Opening

ADJOINING QUADRANGLES

ROAD CLASSIFICATION	
Expressway	Local Connector
Secondary Hwy	Local Road
Ramp	4WD
Interstate Route	US Route
FS Primary Route	FS Passenger Route
	FS High Clearance Route
	State Route

Check with local Forest Service unit  
for current travel conditions and restrictions.

RAID LAKE, WY  
2017

