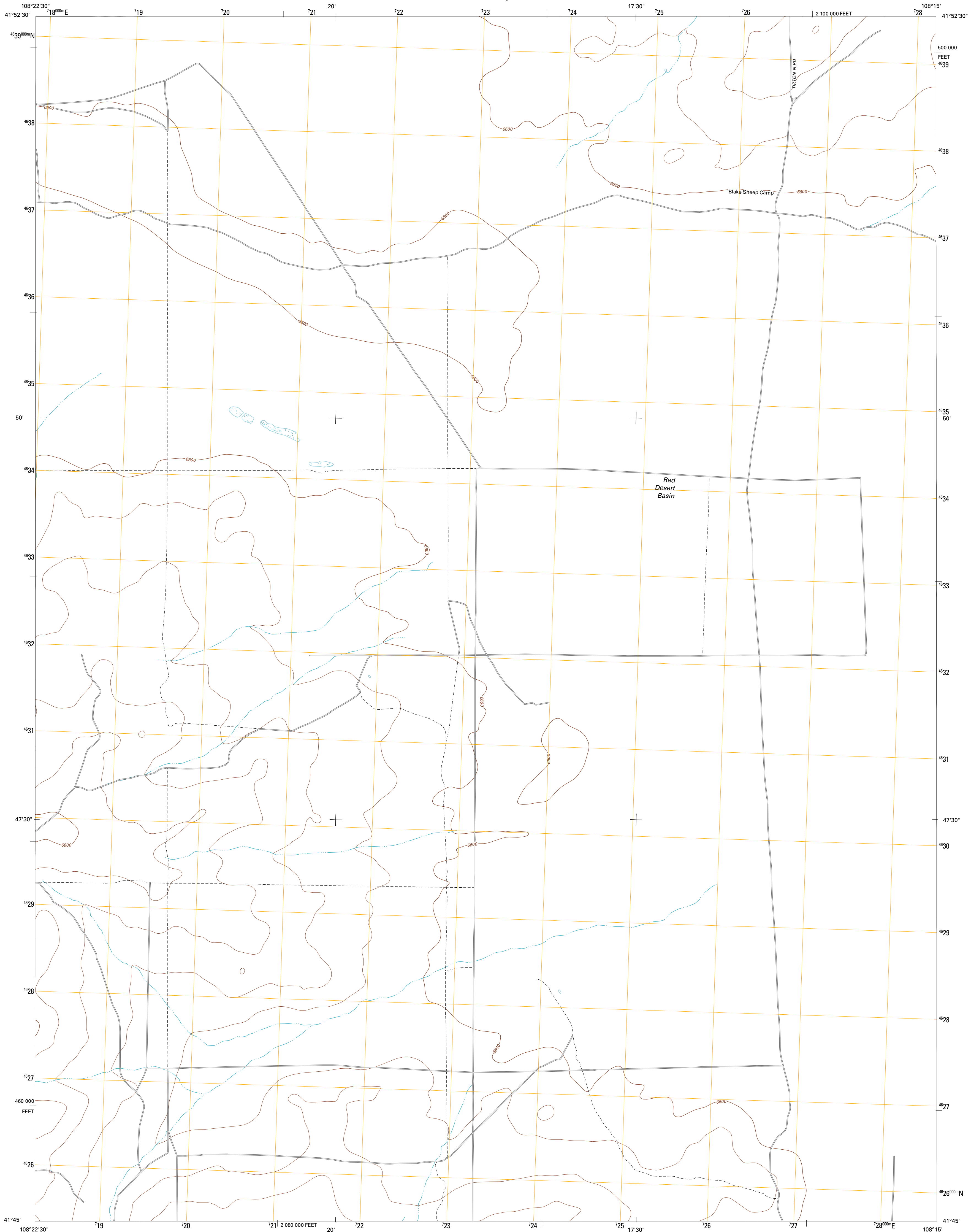




U.S. DEPARTMENT OF THE INTERIOR  
U. S. GEOLOGICAL SURVEY

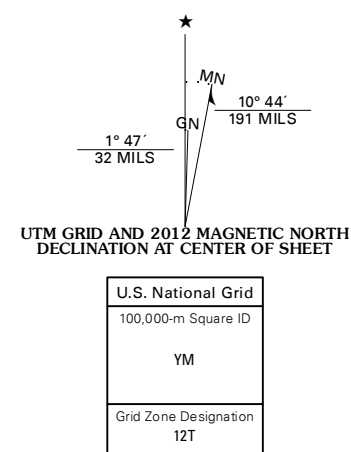


RED LAKE SE QUADRANGLE  
WYOMING-SWEETWATER CO.  
7.5-MINUTE SERIES

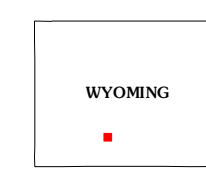


Produced by the United States Geological Survey  
North American Datum of 1983 (NAD83)  
World Geodetic System of 1984 (WGS84). Projection and  
1 000-meter grid: Universal Transverse Mercator, Zone 12T  
10 000-foot ticks: Wyoming Coordinate System of 1983  
(west central zone)

Imagery: N.A.I.P., July 2009  
Roads: ©2006-2011 TomTom  
Names: GNS, 2011  
Hydrography: National Hydrography Dataset, 2009  
Contours: National Elevation Dataset, 2007  
Boundaries: Census, BWC, USGS, 1972 - 2010  
Public Land Survey System: BLM, 2006 - 2008



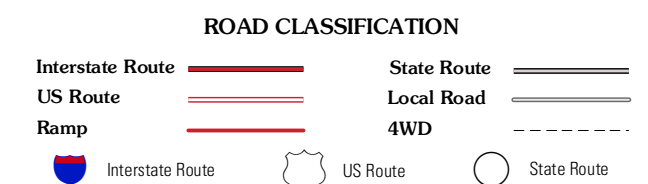
CONTOUR INTERVAL 40 FEET  
NORTH AMERICAN VERTICAL DATUM OF 1988  
This map was produced to conform with the  
National Geospatial Program US Topo Product Standard, 2011.  
A metadata file associated with this product is draft version 0.6.3



QUADRANGLE LOCATION

Red Lake	Red Lake NE	Lost Creek Butte NW
Red Lake SW	Red Lake SE	Lost Creek Butte SW
Desert Springs	Tipton	Red Desert NW

ADJOINING 7.5 QUADRANGLES



RED LAKE SE, WY  
2012