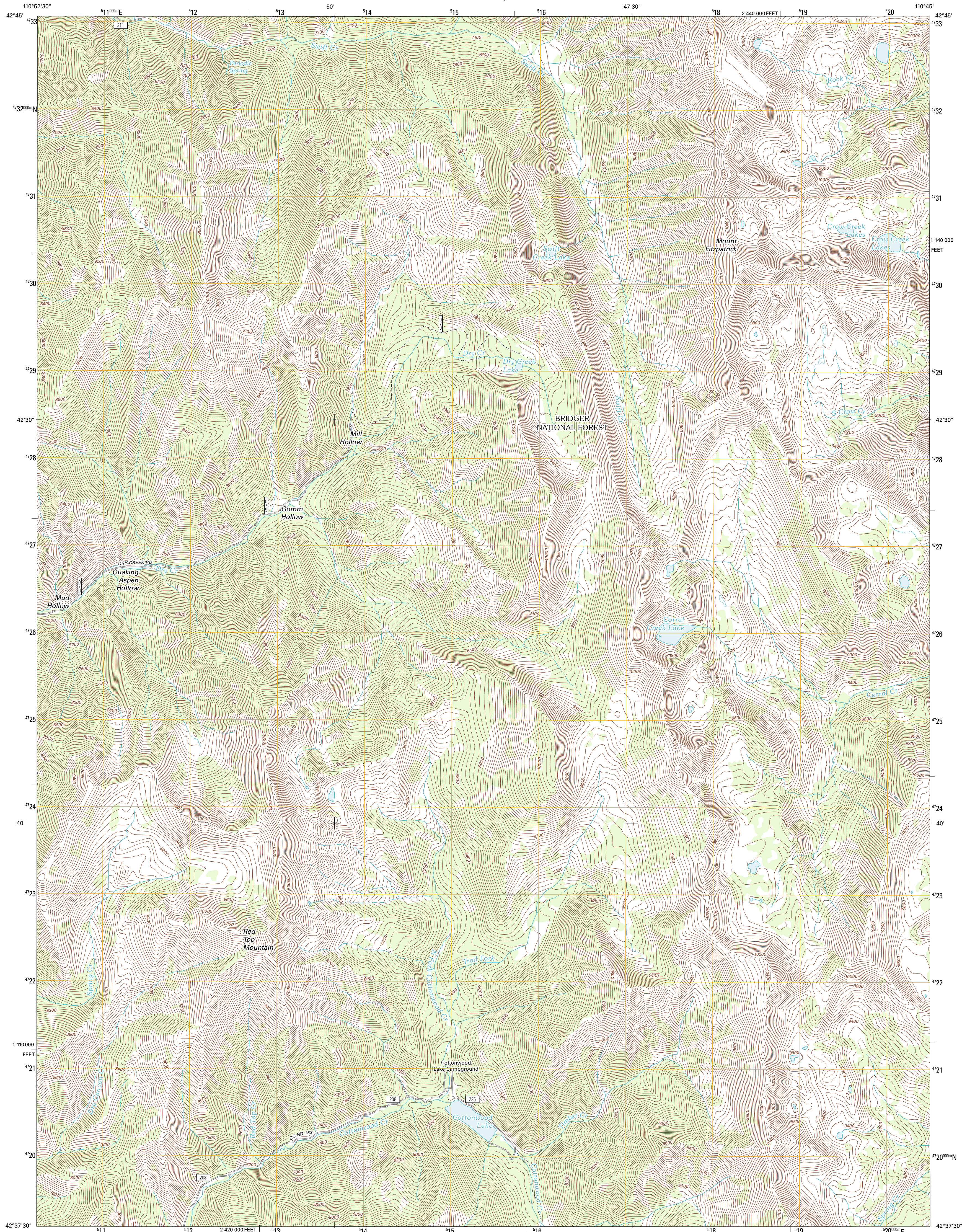




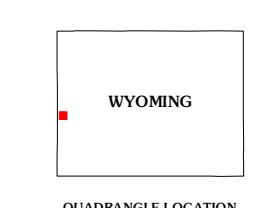
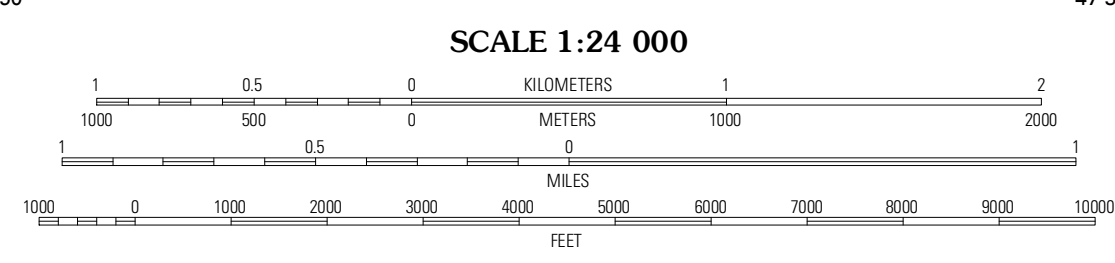
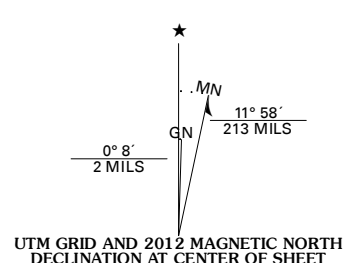
U.S. DEPARTMENT OF THE INTERIOR  
U. S. GEOLOGICAL SURVEY



RED TOP MOUNTAIN QUADRANGLE  
WYOMING-LINCOLN CO.  
7.5-MINUTE SERIES



Produced by the United States Geological Survey  
North American Datum of 1983 (NAD83)  
World Geodetic System of 1984 (WGS84). Projection and  
1 000-meter grid: Universal Transverse Mercator, Zone 12T  
10 000-foot ticks: Wyoming Coordinate System of 1983  
(west zone)

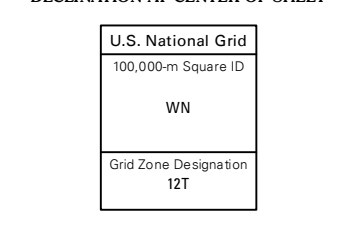


**ROAD CLASSIFICATION**

Interstate Route	State Route
US Route	Local Road
Ramp	4WD
FS Primary Route	FS Passenger Route
	FS High Clearance Route

Check with local Forest Service unit for current travel conditions and restrictions.

Imagery: N.A.P., July 2009  
Roads: ©2006-2011 TomTom  
Roads within US Forest Service Lands with limited Forest Service updates, 2009  
Names: G.N.S., 2011  
Hydrography: National Hydrography Dataset, 2009  
Contours: National Elevation Dataset, 2000  
Boundaries: Census, IBWC, IBC, USGS, 1972 - 2010  
Public Land Survey System: BLM, 2006 - 2008



CONTOUR INTERVAL 40 FEET  
NORTH AMERICAN VERTICAL DATUM OF 1988

This map was produced to conform with the National Geospatial Program US Topo Product Standard, 2011. A metadata file associated with this product is draft version 0.6.3

QUADRANGLE LOCATION

Grover	Rock Lake Peak	Park Creek
Alton	Red Top Mountain	Box Canyon Creek
Smoot	Mount Wagner	Poison Meadows

RED TOP MOUNTAIN, WY  
2012

ADJOINING 7.5' QUADRANGLES