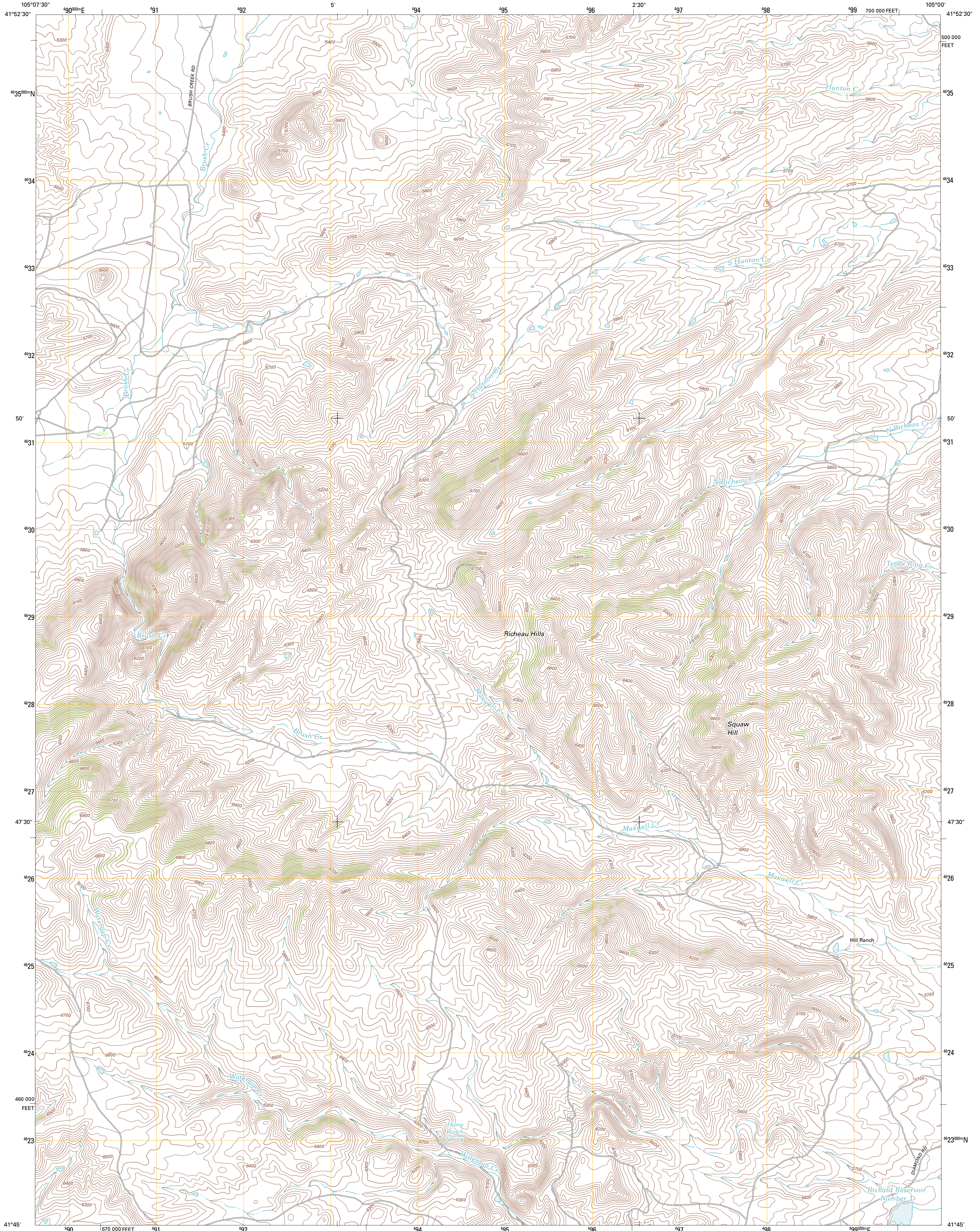




U.S. DEPARTMENT OF THE INTERIOR
U. S. GEOLOGICAL SURVEY

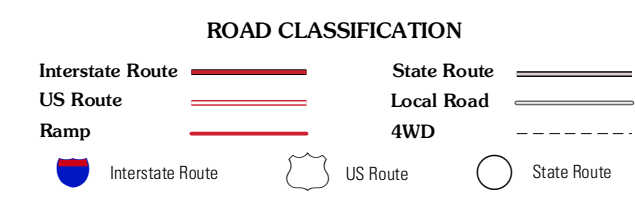
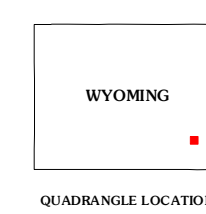
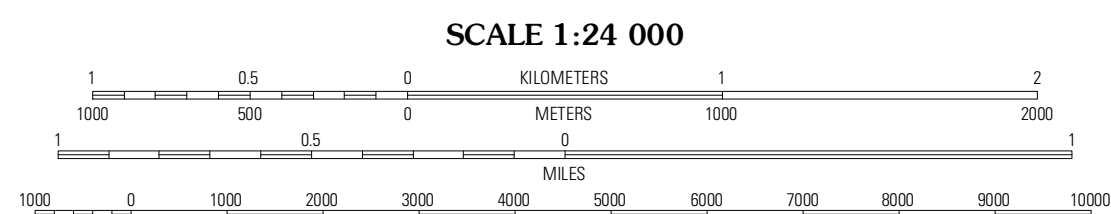
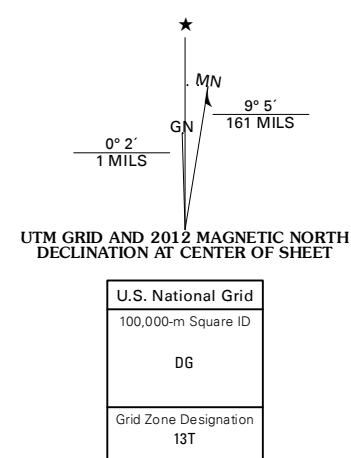


RICHEAU HILLS QUADRANGLE
WYOMING-PLATTE CO.
7.5-MINUTE SERIES



Produced by the United States Geological Survey
North American Datum of 1983 (NAD83)
World Geodetic System of 1984 (WGS84). Projection and
1 000-meter grid: Universal Transverse Mercator, Zone 13T
10 000-foot ticks: Wyoming Coordinate System of 1983 (east zone)

Imagery:.....NAIP, August 2009
Roads:.....©2006-2011 TomTom
Names:.....GNIS, 2011
Hydrography:.....National Hydrography Dataset, 2009
Contours:.....National Elevation Dataset, 2007
Boundaries:.....Census, BVC, IBC, USGS, 1972 - 2010
Public Land Survey System:.....BLM, 2006 - 2008



QUADRANGLE LOCATION

Squaw Rock	Netwick	Ferguson Corner
Netwick SW	Richeau Hills	Double L Ranch
Delano Ranch	McDonal Ranch	Whitcomb Hill

CONTOUR INTERVAL 20 FEET
NORTH AMERICAN VERTICAL DATUM OF 1988

This map was produced to conform with the National Geospatial Program US Topo Product Standard, 2011. A metadata file associated with this product is draft version 0.6.3

RICHEAU HILLS, WY
2012

ADJOINING 7.5' QUADRANGLES