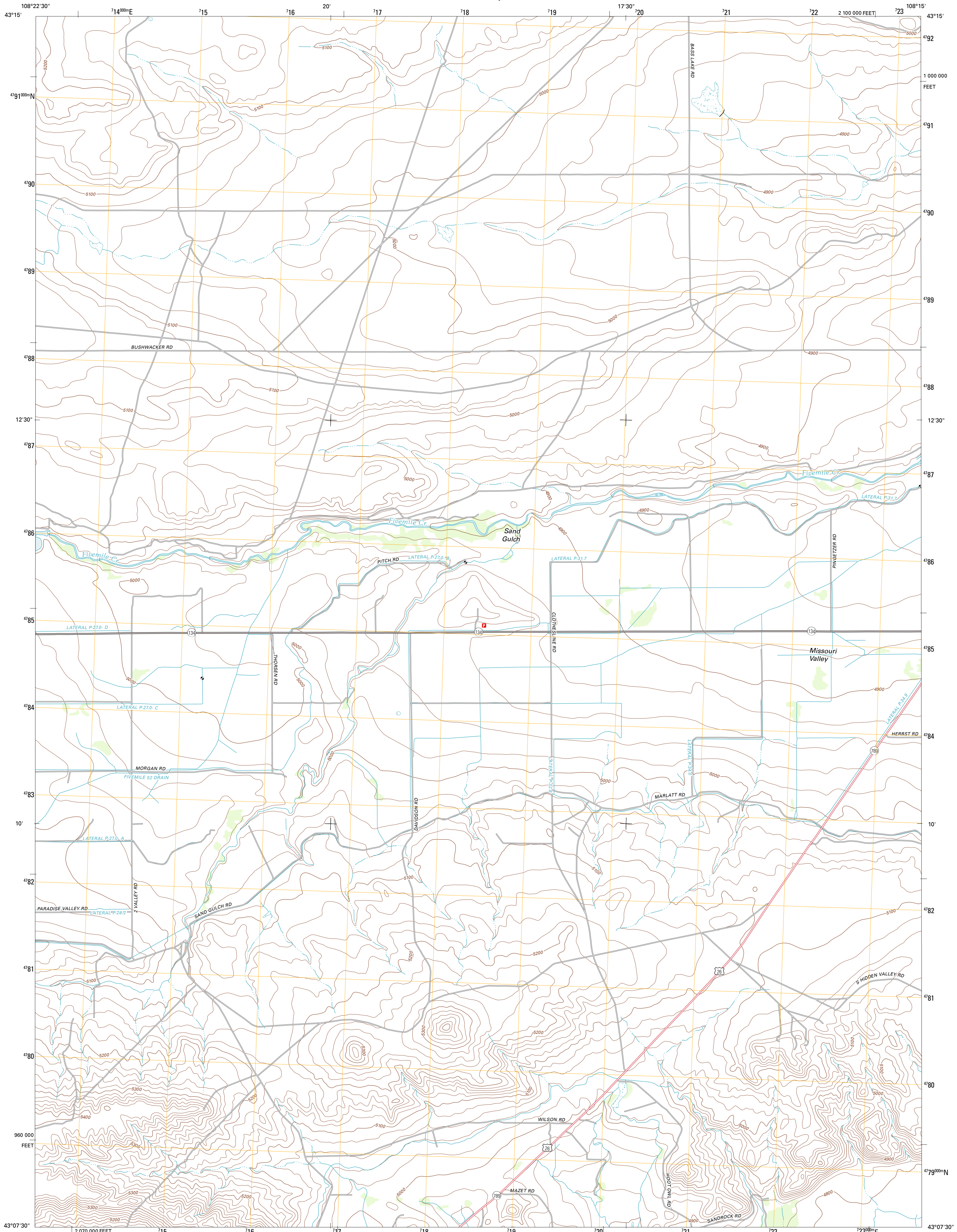




U.S. DEPARTMENT OF THE INTERIOR  
U. S. GEOLOGICAL SURVEY

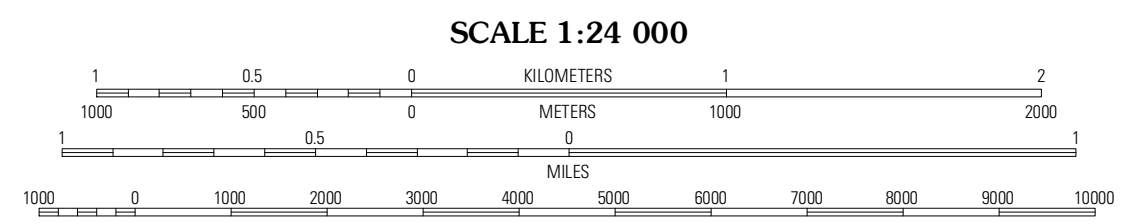
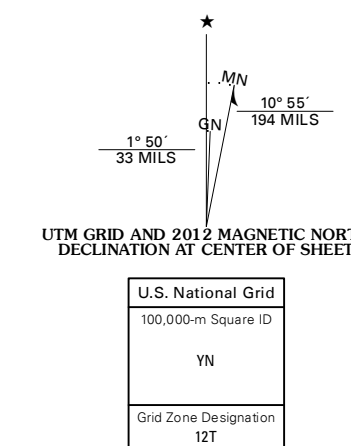


RIVERTON NE QUADRANGLE  
WYOMING-FREMONT CO.  
7.5-MINUTE SERIES

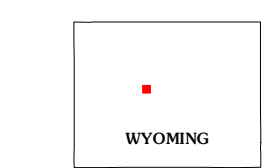


Produced by the United States Geological Survey  
North American Datum of 1983 (NAD83)  
World Geodetic System of 1984 (WGS84). Projection and  
1 000-meter grid: Universal Transverse Mercator, Zone 12T  
10 000-foot ticks: Wyoming Coordinate System of 1983  
(west central zone)

Imagery.....NAIP, July 2009 - August 2009  
Roads.....©2006-2011 TomTom  
Names.....GNIS, 2011  
Hydrography.....National Hydrography Dataset, 2009  
Contours.....National Elevation Dataset, 2006  
Boundaries.....Census, IBV, IBC, USGS, 1972 - 2010  
Public Land Survey System.....BLM, 2006 - 2008



SCALE 1:24 000  
CONTOUR INTERVAL 20 FEET  
NORTH AMERICAN VERTICAL DATUM OF 1988  
This map was produced to conform with the  
National Geospatial Program US Topo Product Standard, 2011.  
A metadata file associated with this product is draft version 0.6.3



QUADRANGLE LOCATION

Mexican Pass SW	Mexican Pass SE	Bonneville SW
Lost Wells Burne	Riverton NE	Hidden Valley
Riverton West	Riverton East	Indian Butte

ADJOINING 7.5' QUADRANGLES

ROAD CLASSIFICATION

Interstate Route	State Route
US Route	Local Road
Ramp	4WD

Legend for road symbols: Interstate Route (thick red line), US Route (red line with shield), Ramp (red line with arrow), State Route (grey line with number), Local Road (grey line), 4WD (dashed grey line).

RIVERTON NE, WY  
2012