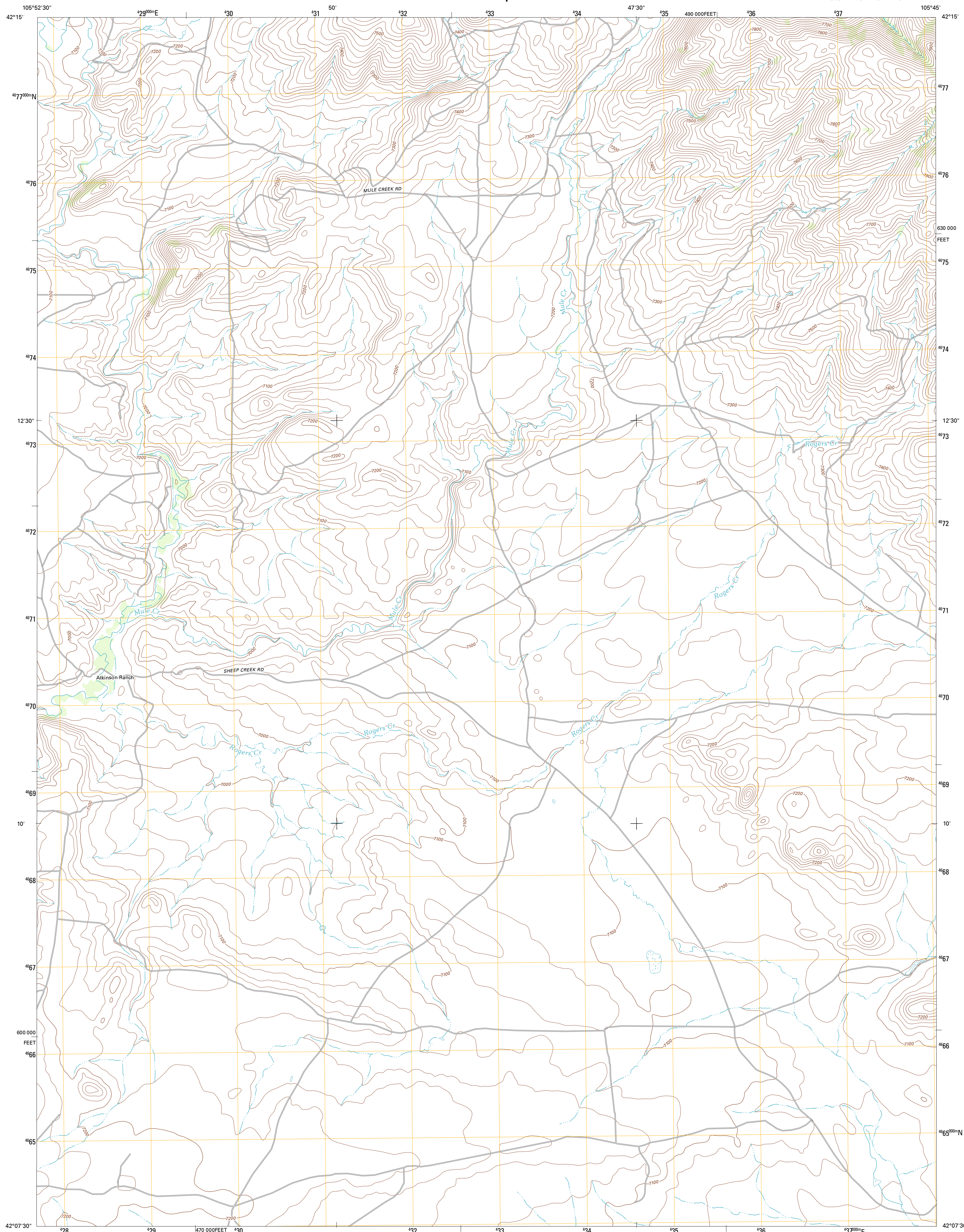




U.S. DEPARTMENT OF THE INTERIOR  
U. S. GEOLOGICAL SURVEY

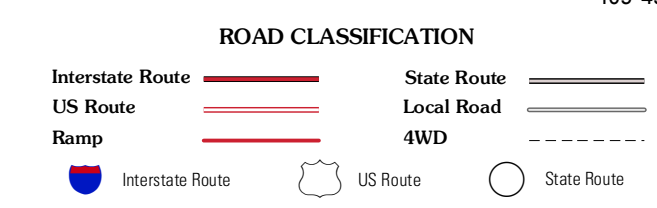
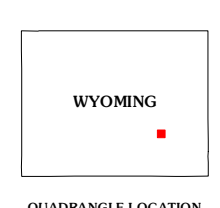
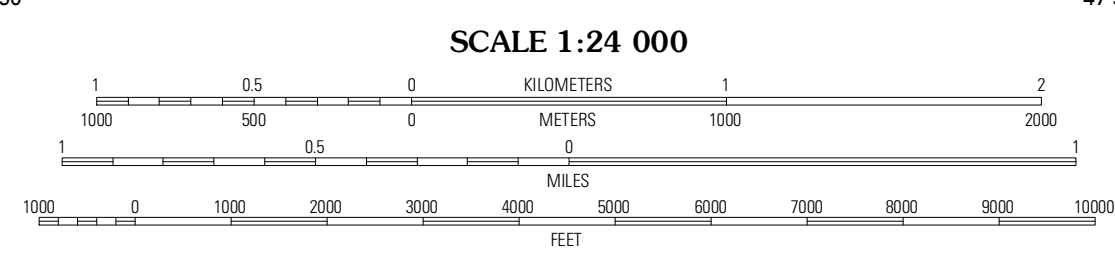
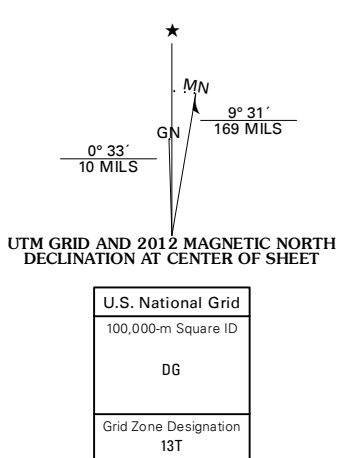


ROGERS CREEK QUADRANGLE  
WYOMING-ALBANY CO.  
7.5-MINUTE SERIES



Produced by the United States Geological Survey  
North American Datum of 1983 (NAD83)  
World Geodetic System of 1984 (WGS84). Projection and  
1 000-meter grid: Universal Transverse Mercator, Zone 13T  
10 000-foot ticks: Wyoming Coordinate System of 1983 (east zone)

Imagery.....NIP, August 2009  
Roads.....©2006-2011 TomTom  
Names.....GNIS, 2011  
Hydrography.....National Hydrography Dataset, 2009  
Contours.....National Elevation Dataset, 2007  
Boundaries.....Census, BWC, IBC, USGS, 1972 - 2010  
Public Land Survey System.....BLM, 2006 - 2008



QUADRANGLE LOCATION

|                |              |                  |
|----------------|--------------|------------------|
| Pass Creek     | Marshall     | Toltec           |
| Boot Heel      | Rogers Creek | Cottonwood Creek |
| Greewood Knoll | Boot Heel SE | Pinto Creek      |

CONTOUR INTERVAL 20 FEET  
NORTH AMERICAN VERTICAL DATUM OF 1988

This map was produced to conform with the National Geospatial Program US Topo Product Standard, 2011. A metadata file associated with this product is draft version 0.6.3

ROGERS CREEK, WY  
2012

ADJOINING 7.5' QUADRANGLES