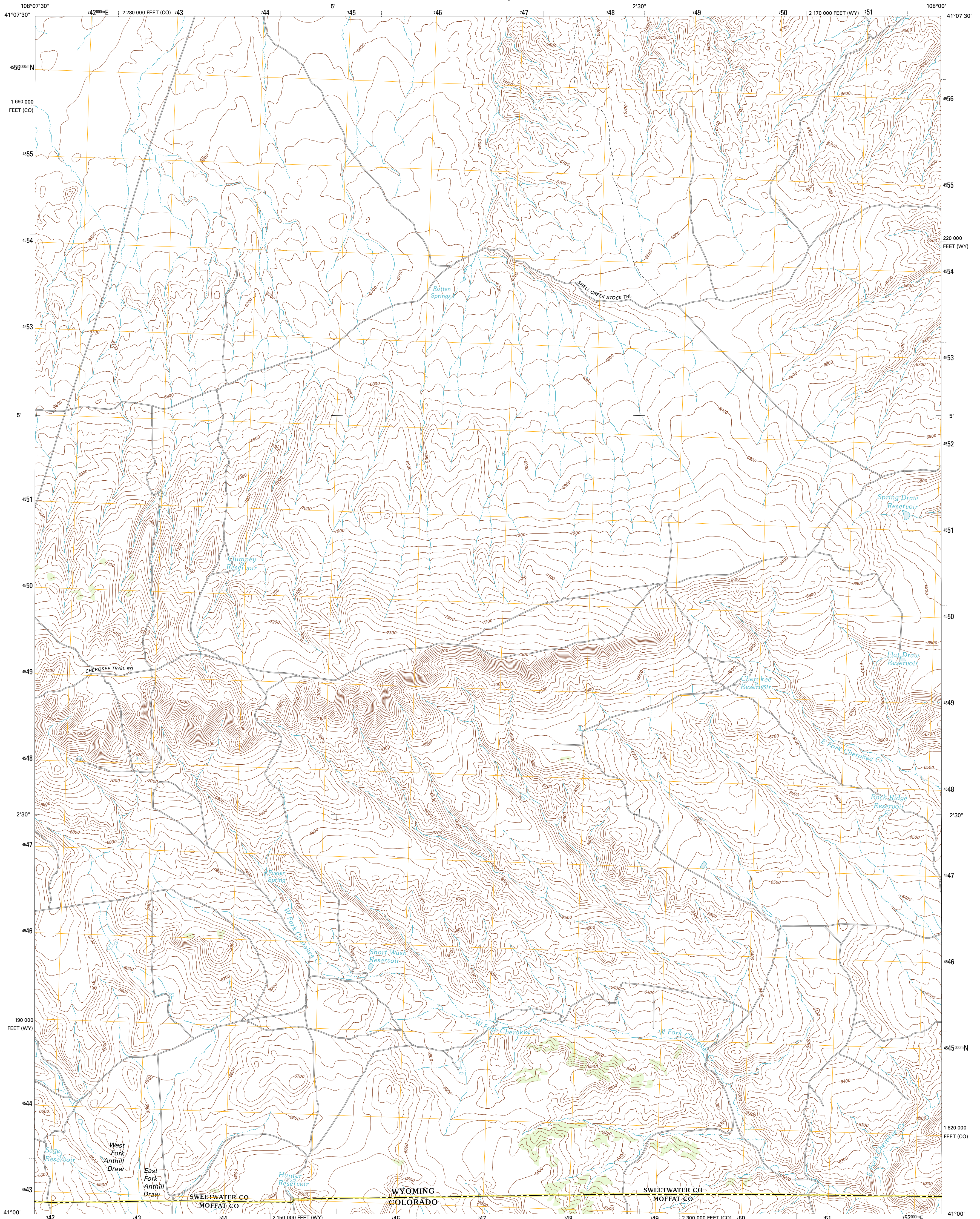




U.S. DEPARTMENT OF THE INTERIOR
U. S. GEOLOGICAL SURVEY

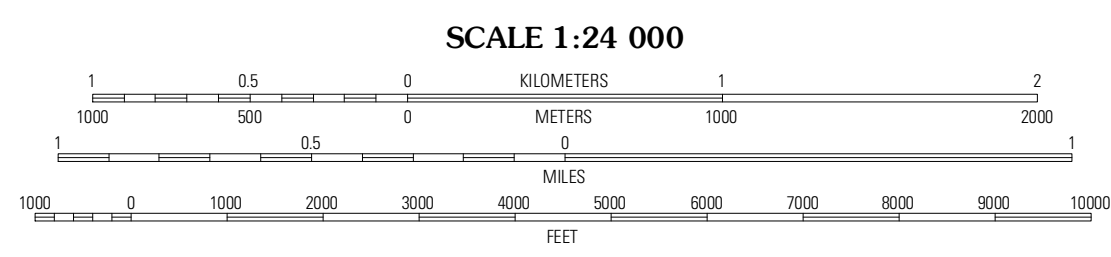
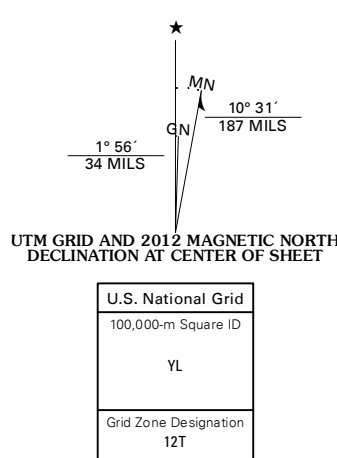


ROTTEN SPRINGS QUADRANGLE
WYOMING-COLORADO
7.5-MINUTE SERIES

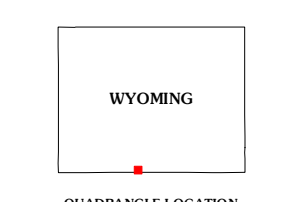


Produced by the United States Geological Survey
North American Datum of 1983 (NAD83)
World Geodetic System of 1984 (WGS84), Projection and
1 000-meter grid: Universal Transverse Mercator, Zone 12T
10 000-foot ticks: Wyoming Coordinate System of 1983
(west central zone), Colorado Coordinate System of 1983
(north zone)

Imagery.....NAIP, July 2009
Roads.....©2006-2011 TomTom
Names.....GNIS, 2011
Hydrography.....National Hydrography Dataset, 2009
Contours.....National Elevation Dataset, 2007
Boundaries.....Census, BWC, BIC, USGS, 1972 - 2010
Public Land Survey System.....BLM, 2006 - 2008



CONTOUR INTERVAL 20 FEET
NORTH AMERICAN VERTICAL DATUM OF 1988
This map was produced to conform with the
National Geospatial Program US Topo Product Standard, 2011.
A metadata file associated with this product is draft version 0.6.3



QUADRANGLE LOCATION

Prehistoric Rim	Powder Mountain NE	Dripping Rock Spring
Powder Mountain	Rotten Springs	McPherson Springs
Reservoir Draw	The Nipple NE	Bighole Butte

ROAD CLASSIFICATION

Interstate Route	State Road
US Route	Local Road
Ramp	4WD

ROTTEN SPRINGS, WY-CO
2012

ADJOINING 7.5' QUADRANGLES