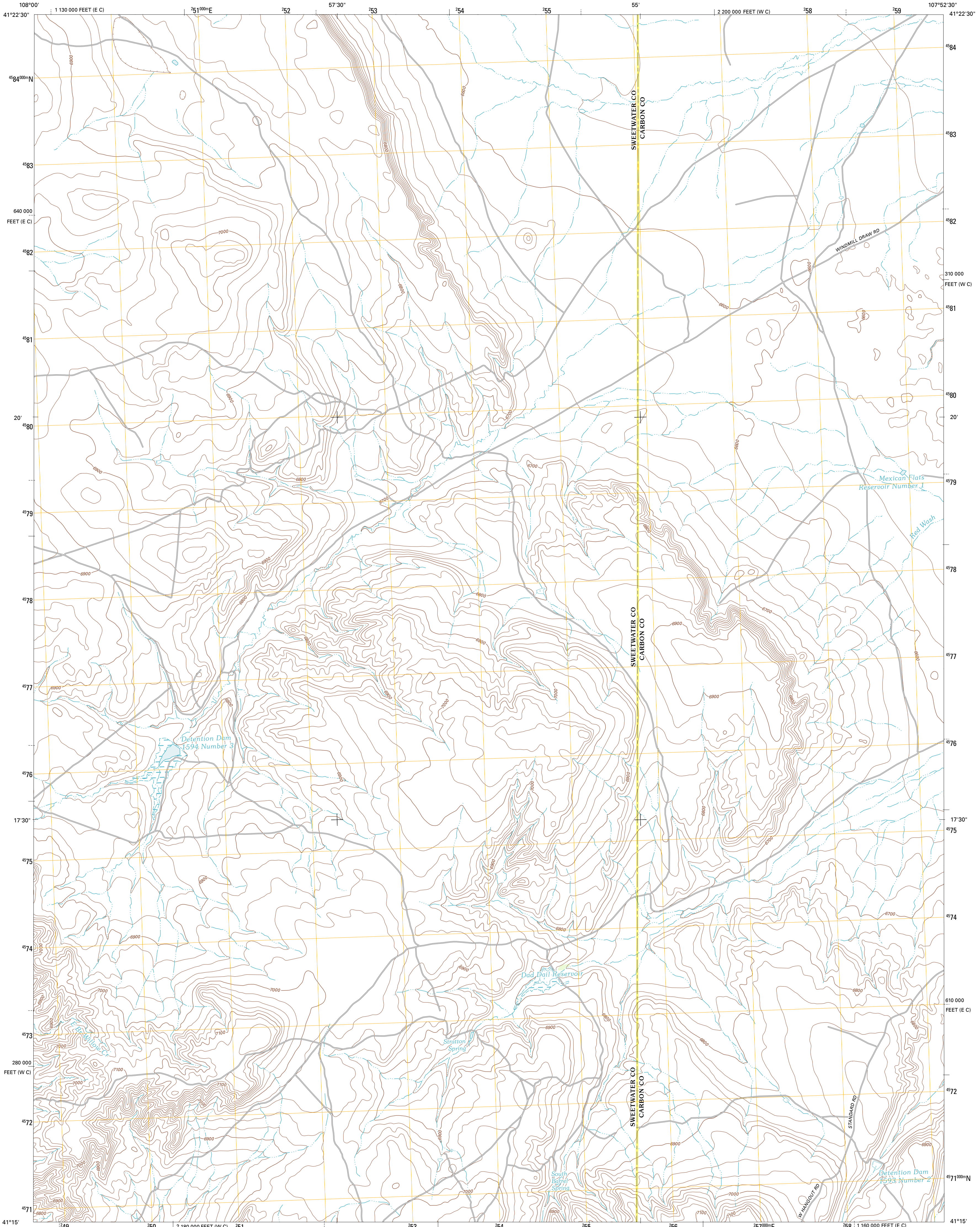




U.S. DEPARTMENT OF THE INTERIOR
U. S. GEOLOGICAL SURVEY

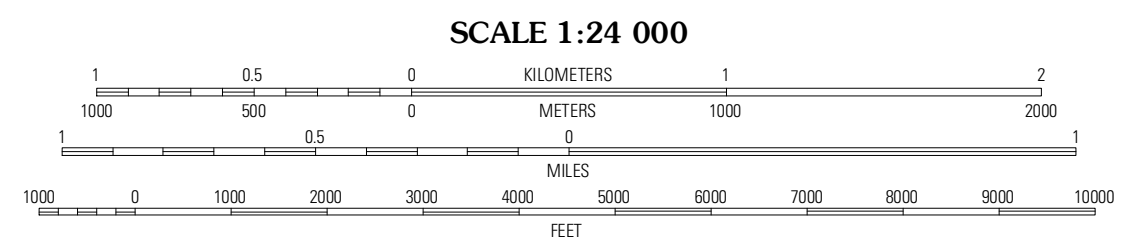
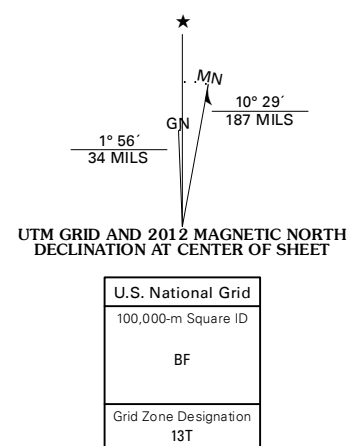


SOUTH BARREL SPRING QUADRANGLE
WYOMING
7.5-MINUTE SERIES

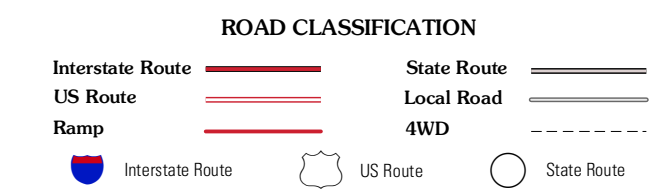
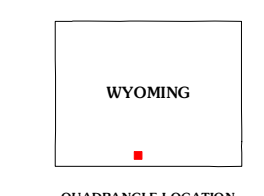


Produced by the United States Geological Survey
North American Datum of 1983 (NAD83)
World Geodetic System of 1984 (WGS84). Projection and
1 000-meter grid: Universal Transverse Mercator, Zone 13T
10 000-foot ticks: Wyoming Coordinate System of 1983
(west central and east central zones)

Imagery.....NAIP, July 2009
Roads.....©2006-2011 TomTom
Names.....GNIS, 2011
Hydrography.....National Hydrography Dataset, 2009
Contours.....National Elevation Dataset, 2008
Boundaries.....Census, BWC, IBC, USGS, 1972 - 2010
Public Land Survey System.....BLM, 2006 - 2008



SCALE 1:24 000
CONTOUR INTERVAL 20 FEET
NORTH AMERICAN VERTICAL DATUM OF 1988
This map was produced to conform with the
National Geospatial Program US Topo Product Standard, 2011.
A metadata file associated with this product is draft version 0.6.3



ADJOINING 7.5' QUADRANGLES		
Barrel Springs	Mexican Flats NW	Duck Lake
Salazar Butte	South Barrel Spring	Mexican Flats
Powder Mountain NE	Dripping Rock Spring	Flat Top Mountain

SOUTH BARREL SPRING, WY
2012