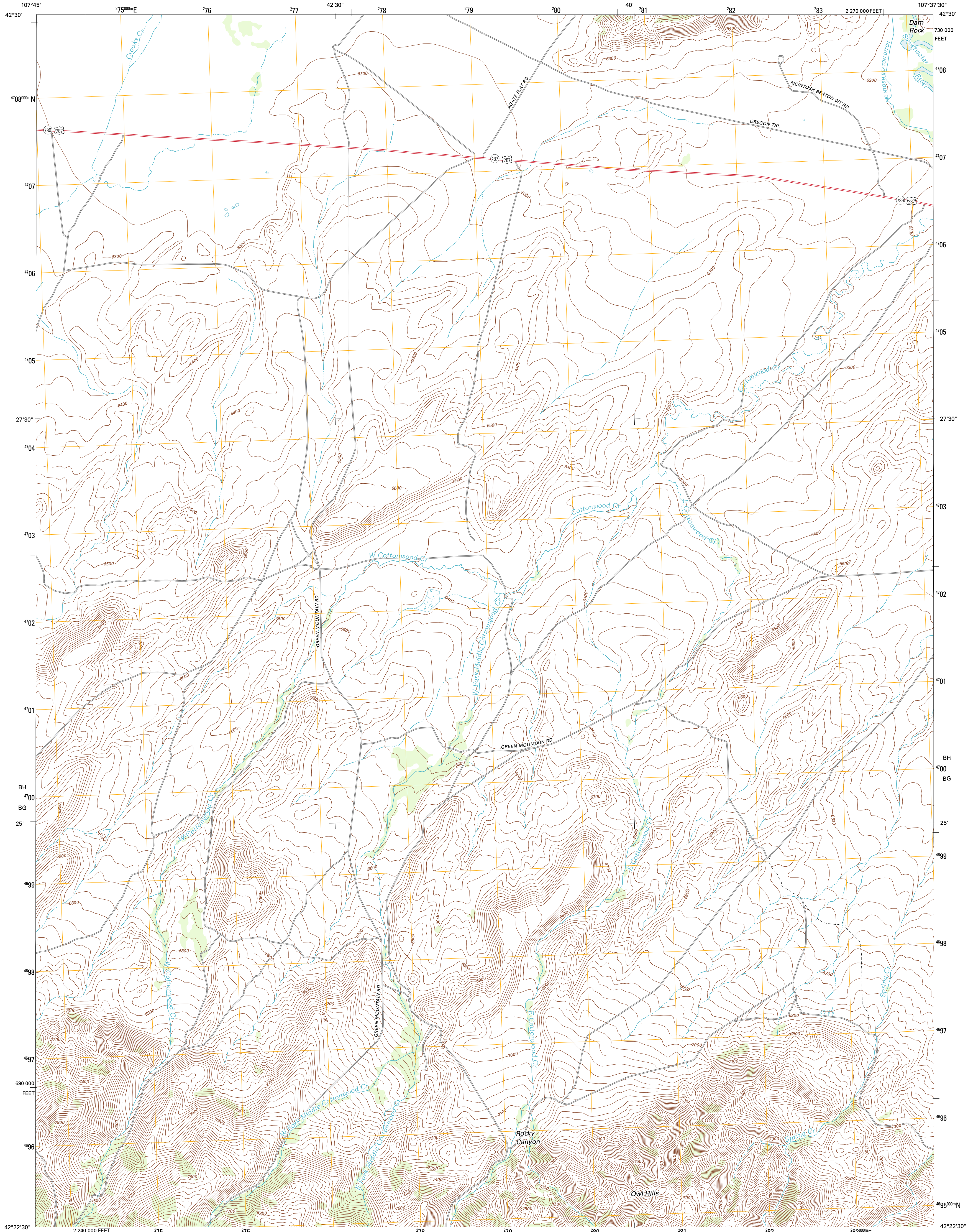




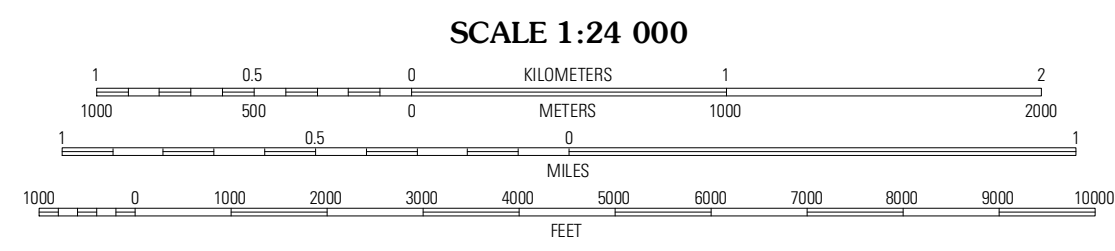
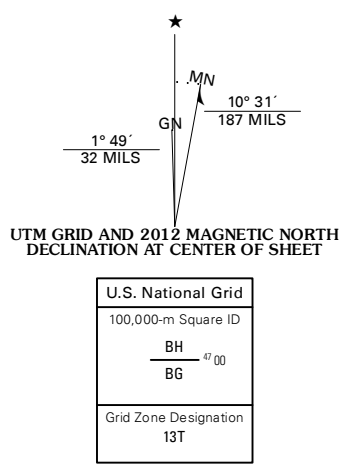
U.S. DEPARTMENT OF THE INTERIOR
U. S. GEOLOGICAL SURVEY



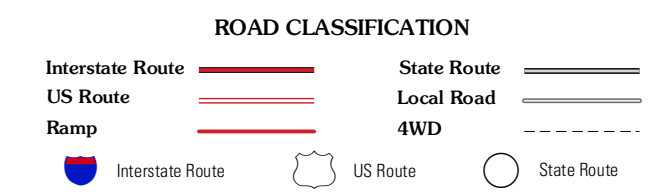
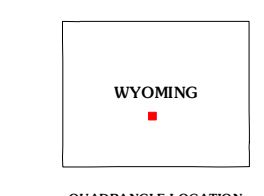
SPLIT ROCK NW QUADRANGLE
WYOMING-FREMONT CO.
7.5-MINUTE SERIES



Produced by the United States Geological Survey
North American Datum of 1983 (NAD83)
World Geodetic System of 1984 (WGS84). Projection and
1 000-meter grid: Universal Transverse Mercator, Zone 13T
10 000-foot ticks: Wyoming Coordinate System of 1983
(west central zone)



CONTOUR INTERVAL 20 FEET
NORTH AMERICAN VERTICAL DATUM OF 1988
This map was produced to conform with the
National Geospatial Program US Topo Product Standard, 2011.
A metadata file associated with this product is draft version 0.6.3



QUADRANGLE LOCATION

| | | |
|-----------------|----------------|--------------|
| Stampede Meadow | Black Rock Gap | Lands Dune |
| Jeffrey City | Split Rock NW | Split Rock |
| Crooks Peak | Sagebrush Park | Whiskey Peak |

SPLIT ROCK NW, WY
2012

ADJOINING 7.5 QUADRANGLES