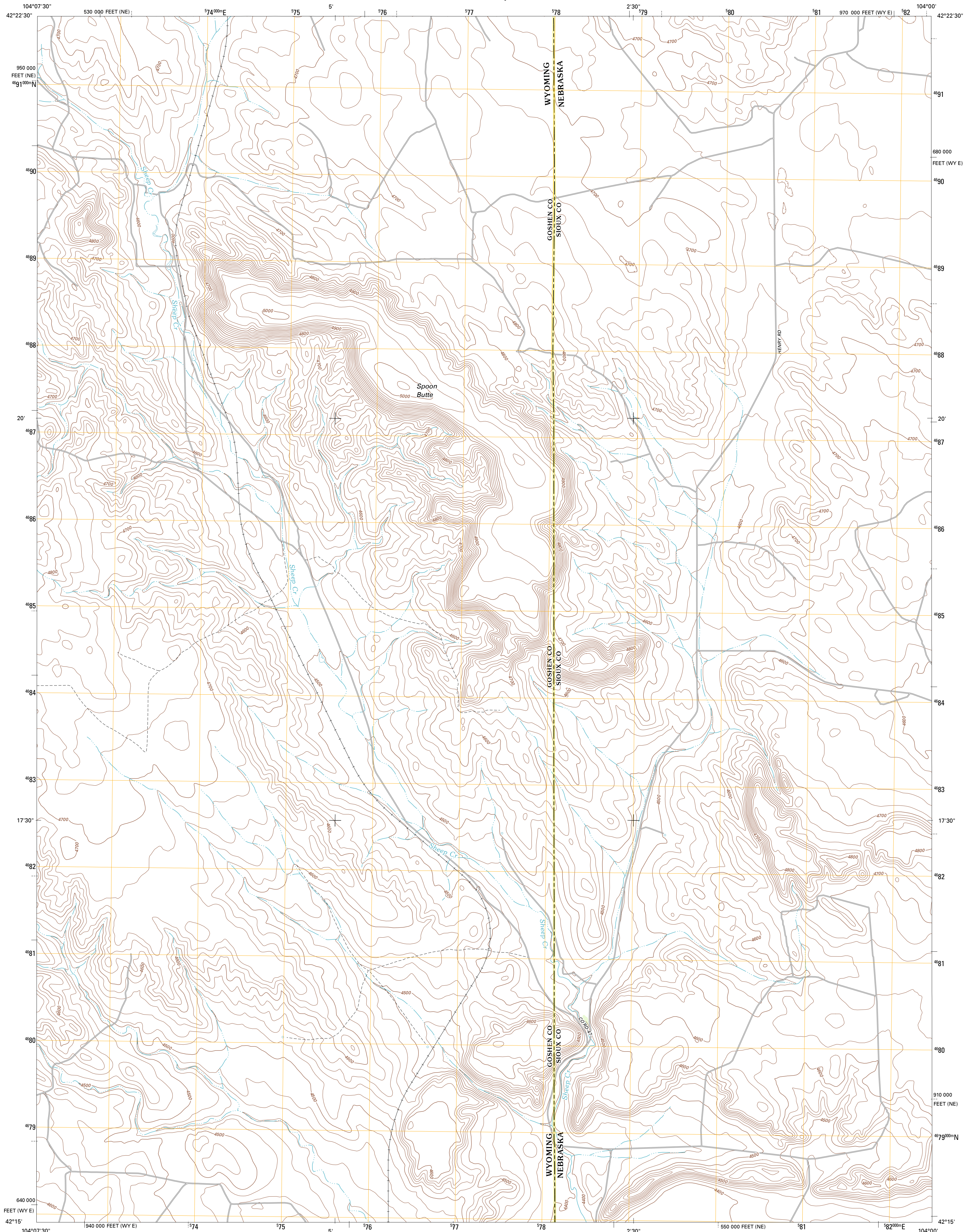




U.S. DEPARTMENT OF THE INTERIOR  
U. S. GEOLOGICAL SURVEY

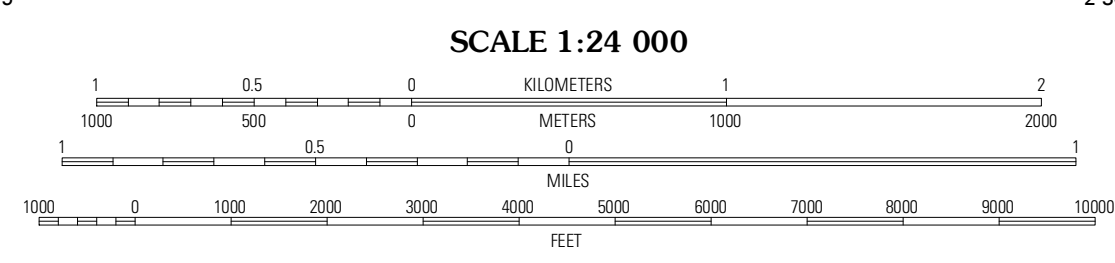
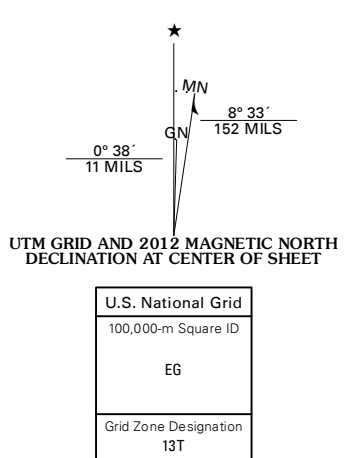


SPoon BUTTE QUADRANGLE  
WYOMING-NEBRASKA  
7.5-MINUTE SERIES

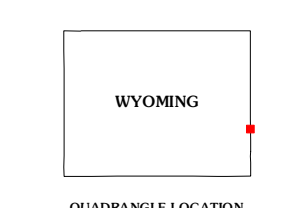


Produced by the United States Geological Survey  
North American Datum of 1983 (NAD83)  
World Geodetic System of 1984 (WGS84). Projection and  
1 000-meter grid: Universal Transverse Mercator, Zone 13T  
10 000-foot ticks: Wyoming Coordinate System of 1983 (east  
zone), Nebraska Coordinate System of 1983

Imagery.....©2006-2011 TomTom  
Roads.....©2006-2011 TomTom  
Names.....GNIS, 2011  
Hydrography.....National Hydrography Dataset, 2009  
Contours.....National Elevation Dataset, 2002  
Boundaries.....Census, BWC, BIC; USGS, 1972 - 2010  
Public Land Survey System.....BLM, 2006 - 2008

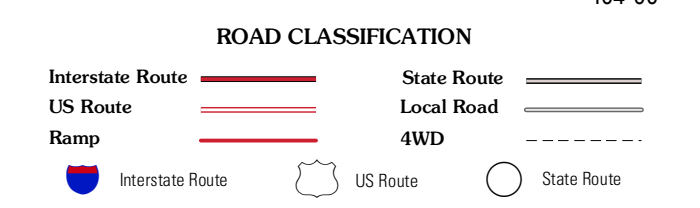


CONTOUR INTERVAL 20 FEET  
NORTH AMERICAN VERTICAL DATUM OF 1988  
This map was produced to conform with the  
National Geospatial Program US Topo Product Standard, 2011.  
A metadata file associated with this product is draft version 0.6.3



QUADRANGLE LOCATION

Spoon Butte NW	Lone Sand Hill	Agate NW
Spoon Butte SW	Spoon Butte	Agate SW
Tea Kettle Rock	Carpenter Ranch	Chalk Buttes



SPoon BUTTE, WY-NE  
2012

ADJOINING 7.5 QUADRANGLES