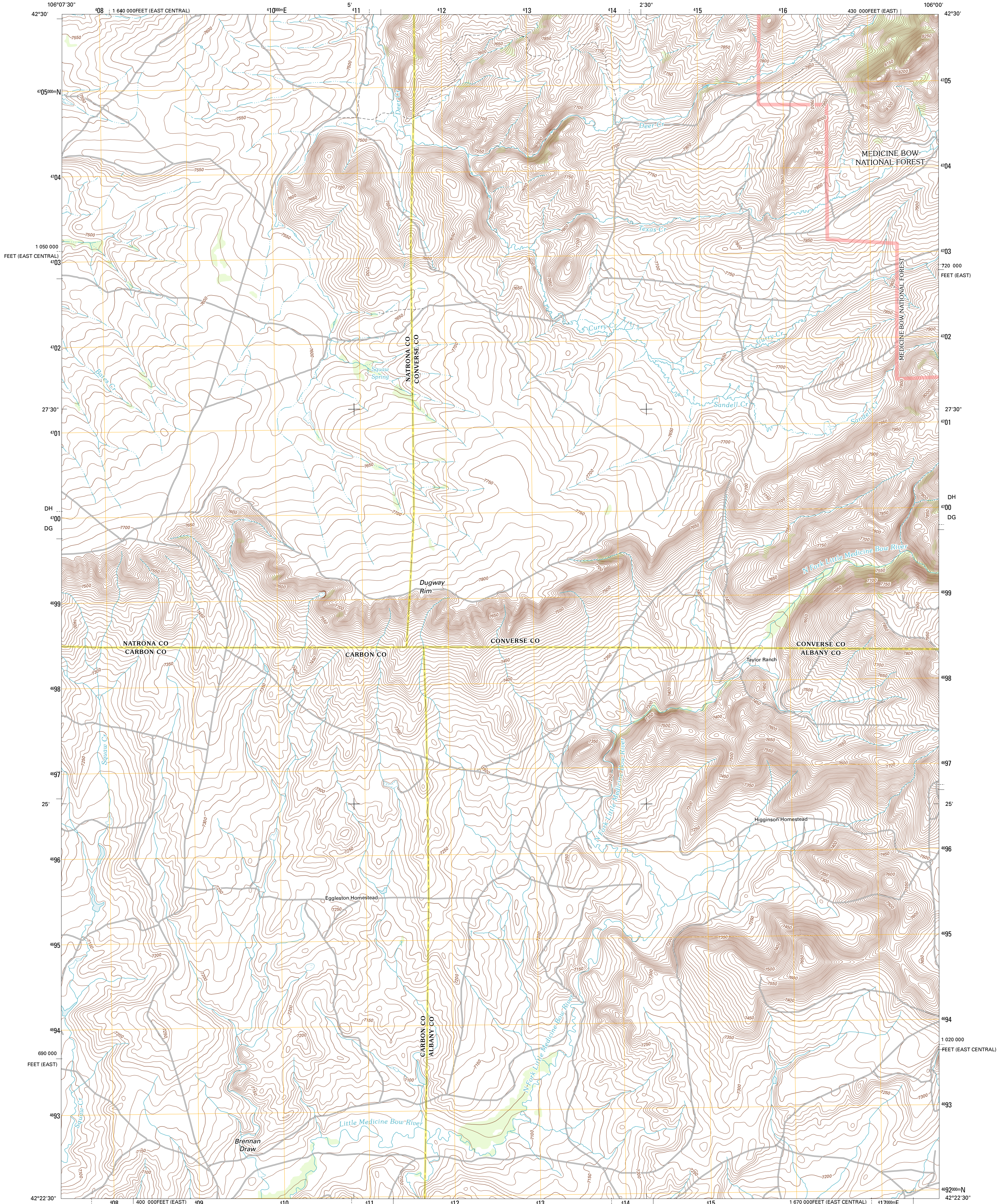




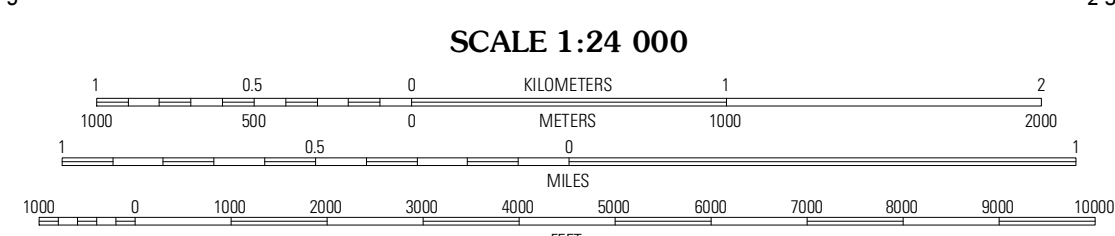
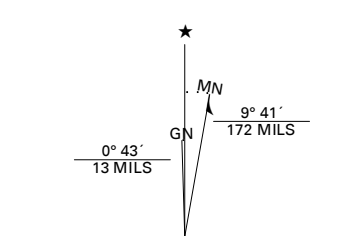
U.S. DEPARTMENT OF THE INTERIOR  
U. S. GEOLOGICAL SURVEY



SQUAW SPRING QUADRANGLE  
WYOMING  
7.5-MINUTE SERIES



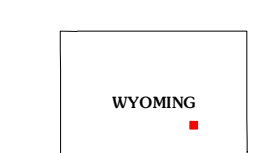
Produced by the United States Geological Survey  
North American Datum of 1983 (NAD83)  
World Geodetic System of 1984 (WGS84). Projection and  
1 000-meter grid: Universal Transverse Mercator, Zone 13T  
10 000-foot ticks: Wyoming Coordinate System of 1983 (east  
and east central zones)



CONTOUR INTERVAL 10 FEET  
NORTH AMERICAN VERTICAL DATUM OF 1988

Imagery: N.A.P., August 2009  
Roads: ©2006-2011 TomTom  
Roads within US Forest Service Lands: FSTopo Data  
with limited Forest Service updates, 2009  
Names: G.N.I.S., 2011  
Hydrography: National Hydrography Dataset, 2009  
Contours: National Elevation Dataset, 2006  
Boundaries: Census, IBWC, IBC, USGS, 1972 - 2010  
Public Land Survey System: BLM, 2006 - 2008

U.S. National Grid	100,000m Square ID
DH	'10
DG	'10
Grid Zone Designation	13T



QUADRANGLE LOCATION

Ice Cave Mountain	Beno Hill	Buck Peak
Bates Creek Reservoir	Squaw Spring	Rock Creek
Moss Agate Reservoir	Chalk Hills	Pass Creek

ROAD CLASSIFICATION	
Interstate Route	State Route
US Route	Local Road
Ramp	4WD
Interstate Route	US Route
FS Primary Route	FS Passenger Route
	FS High Clearance Route

Check with local Forest Service unit for current travel conditions and restrictions.

SQUAW SPRING, WY  
2012

ADJOINING 7.5 QUADRANGLES