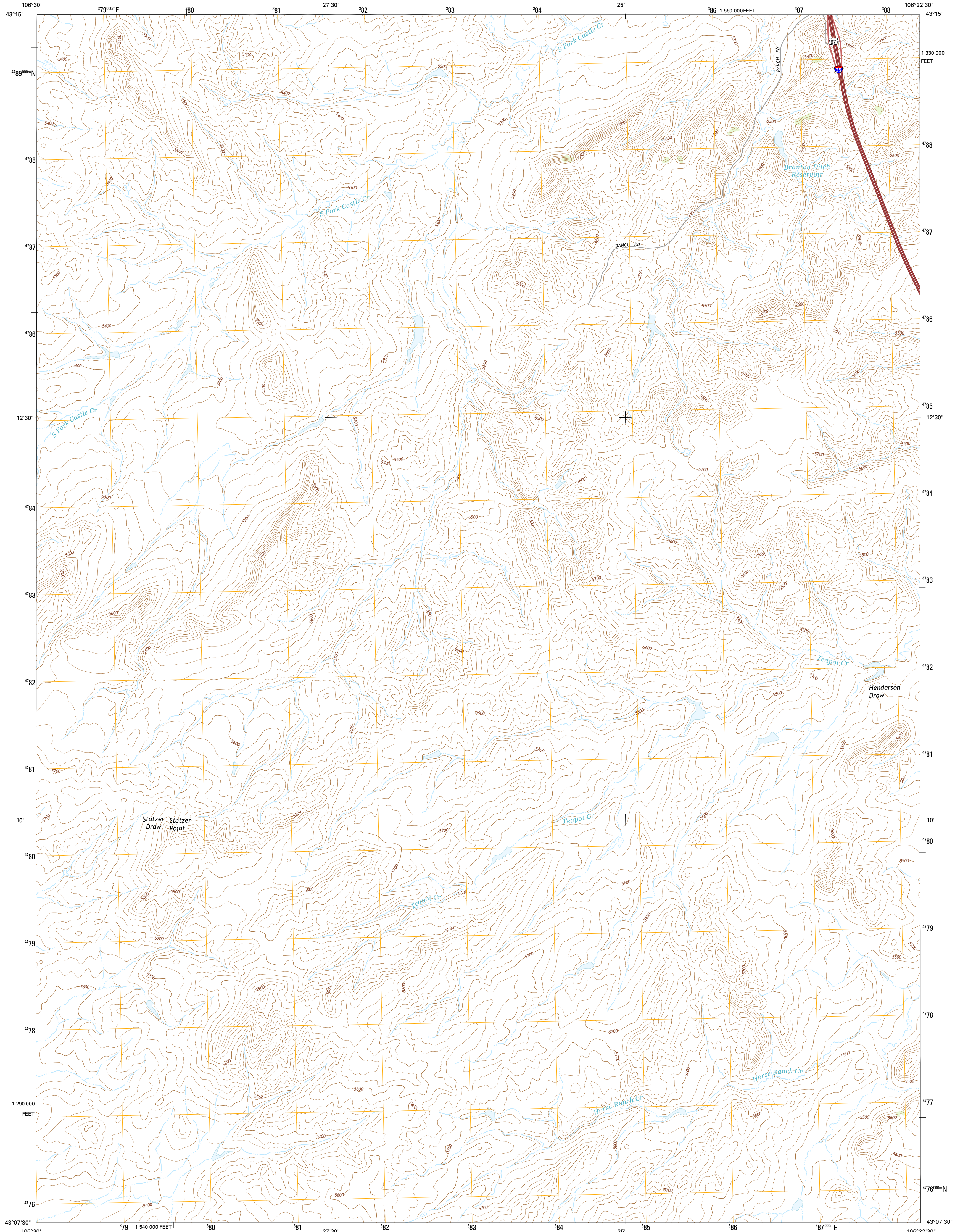




U.S. DEPARTMENT OF THE INTERIOR  
U.S. GEOLOGICAL SURVEY



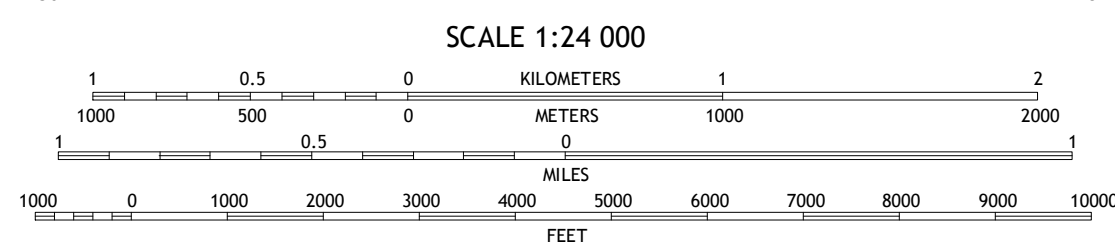
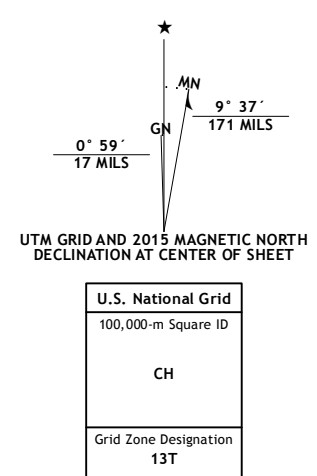
STATZER POINT QUADRANGLE  
WYOMING-NATRONA CO.  
7.5-MINUTE SERIES



Produced by the United States Geological Survey  
North American Datum of 1983 (NAD83)  
World Geodetic System of 1984 (WGS84). Projection and  
1 000-meter grid: Universal Transverse Mercator, Zone 13T  
10 000-foot ticks: Wyoming Coordinate System of 1983 (east  
central zone)

This map is not a legal document. Boundaries may be  
generalized for this map scale. Private lands within government  
reservations may not be shown. Obtain permission before  
entering private lands.

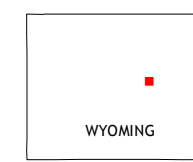
Imagery:.....NAIP, July 2012  
Roads:.....HERE, ©2013 - 2014  
Names:.....GNIS, 2015  
Hydrography:.....National Hydrography Dataset, 2012  
Contours:.....National Elevation Dataset, 2005  
Boundaries:.....Multiple sources; see metadata file 1972 - 2015  
Public Land Survey System:.....BLM, 2011



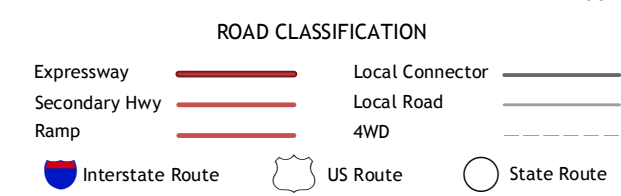
SCALE 1:24 000

CONTOUR INTERVAL 20 FEET  
NORTH AMERICAN VERTICAL DATUM OF 1988

This map was produced to conform with the  
National Geospatial Program US Topo Product Standard, 2011.  
A metadata file associated with this product is draft version 0.6.18



WYOMING  
QUADRANGLE LOCATION



1	2	3
4	5	6
7	8	9

ADJOINING QUADRANGLES

- 1 Camel Hump Reservoir
- 2 Big Gulch
- 3 Salt Creek
- 4 Merino
- 5 Teapot Rock
- 6 Smith Flats
- 7 Illico
- 8 McPherson Draw

STATZER POINT, WY  
2015

