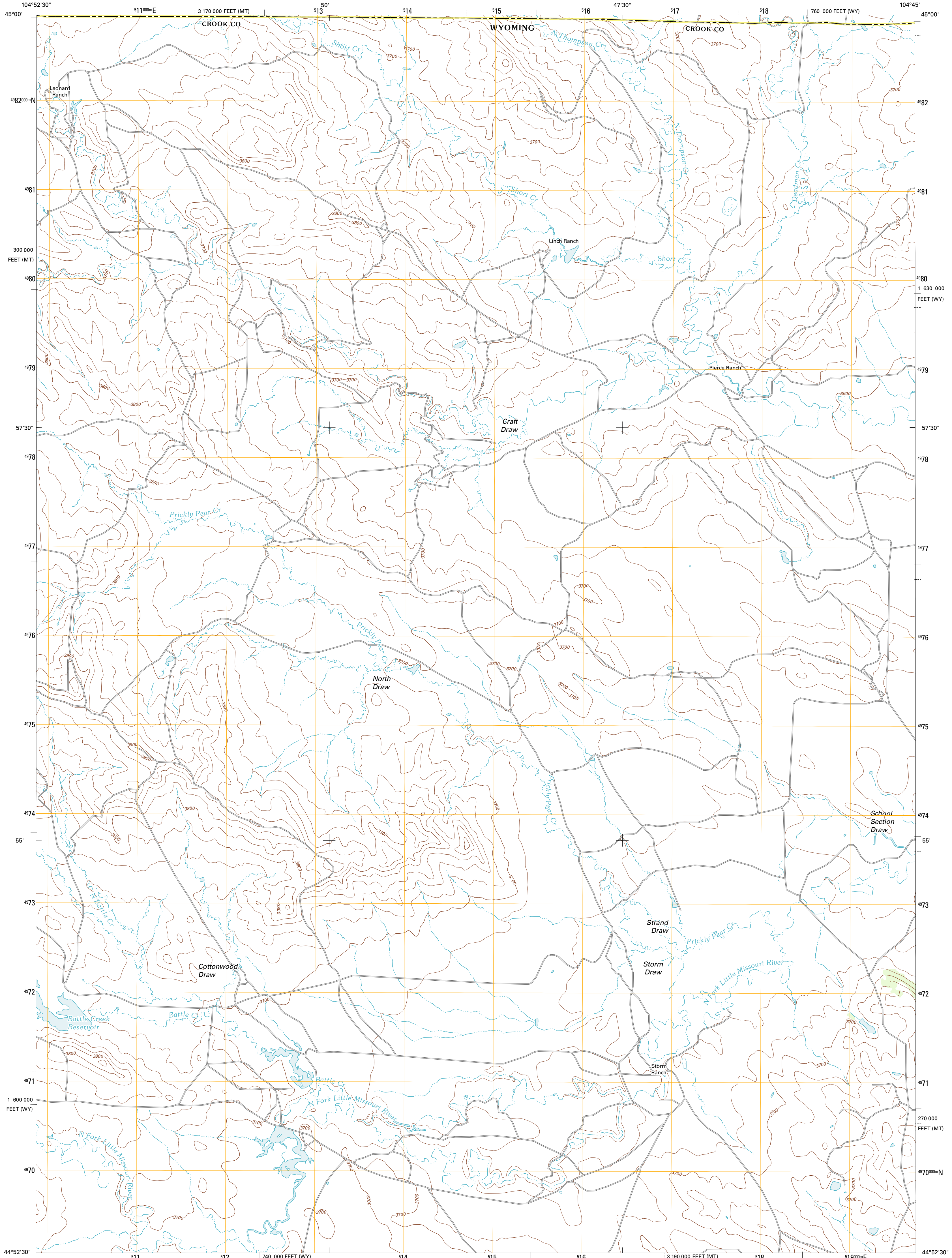




U.S. DEPARTMENT OF THE INTERIOR
U. S. GEOLOGICAL SURVEY



STORM DRAW QUADRANGLE
WYOMING-MONTANA
7.5-MINUTE SERIES



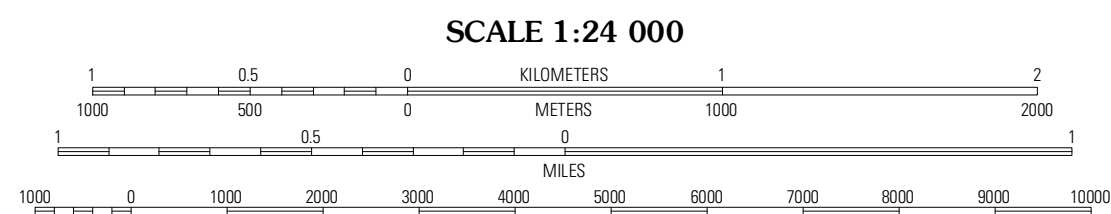
Produced by the United States Geological Survey
North American Datum of 1983 (NAD83)
World Geodetic System of 1984 (WGS84). Projection and
1 000-meter grid: Universal Transverse Mercator, Zone 13T
10 000-foot ticks: Wyoming Coordinate System of 1983 (east
zone), Montana Coordinate System of 1983

Imagery.....N.A.P., August 2009
Roads.....©2006-2011 TomTom
Names.....GNSS, 2011
Hydrography.....National Hydrography Dataset, 2009
Contours.....National Elevation Dataset, 2009
Boundaries.....Census, BWC, IBC, USGS, 1972 - 2010
Public Land Survey System.....BLM, 2006 - 2008

UTM GRID AND 2012 MAGNETIC NORTH
DECLINATION AT CENTER OF SHEET

U.S. National Grid
100 000m Square ID
EK

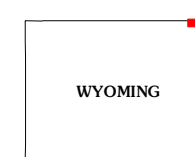
Grid Zone Designation
13T



SCALE 1:24 000

CONTOUR INTERVAL 20 FEET
NORTH AMERICAN VERTICAL DATUM OF 1988

This map was produced to conform with the
National Geospatial Program US Topo Product Standard, 2011.
A metadata file associated with this product is draft version 0.6.3



QUADRANGLE LOCATION

Stack Rocks	Hammond SE	Cochran Reservoir
Moulton Creek	Storm Draw	Pipe Draw
Cedar Ridge	Wood Canyon	Strawberry Hill

ADJOINING 7.5 QUADRANGLES

ROAD CLASSIFICATION

Interstate Route

US Route

Ramp

State Route

Local Road

4WD

Interstate Route

US Route

State Route

STORM DRAW, WY-MT
2012