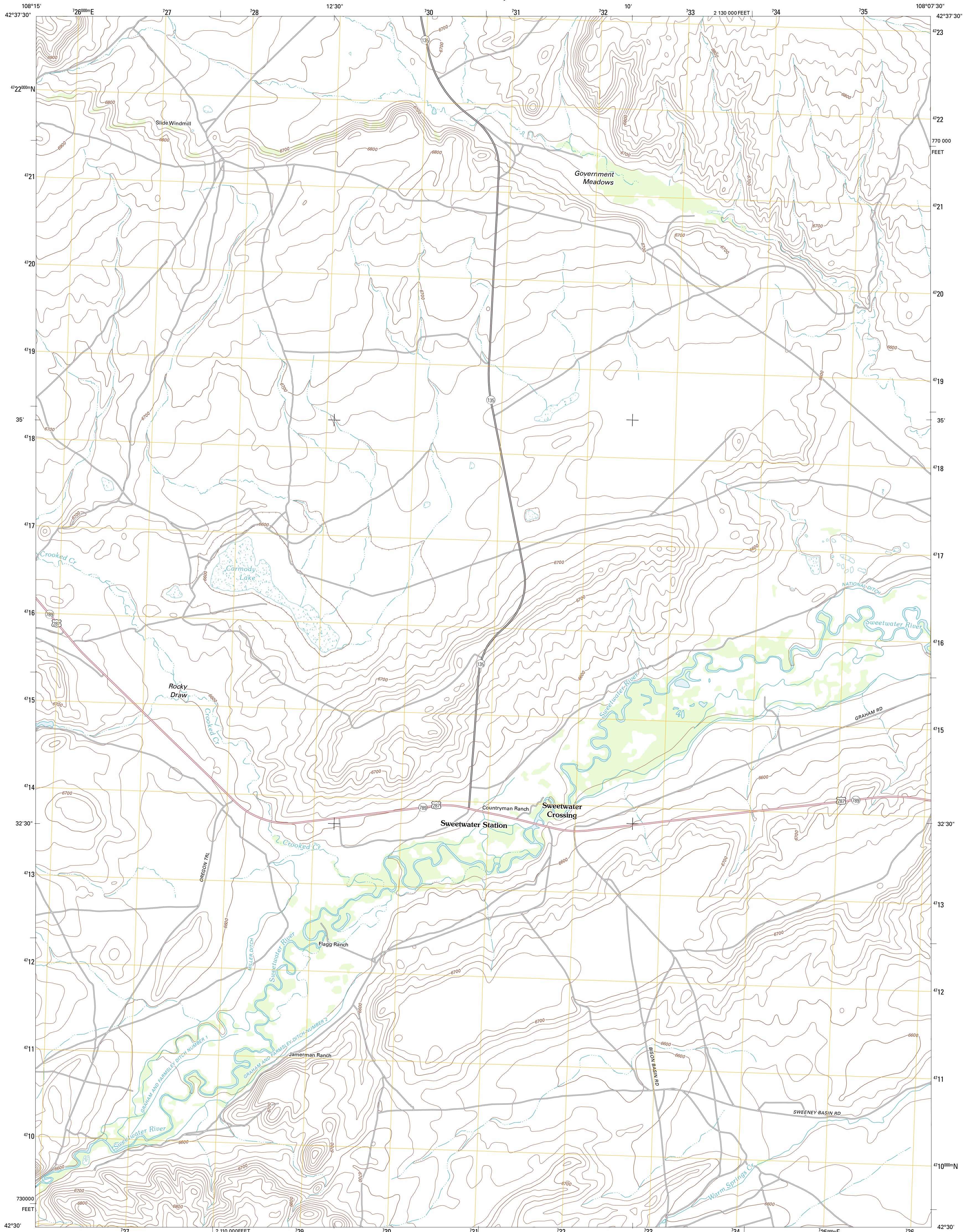




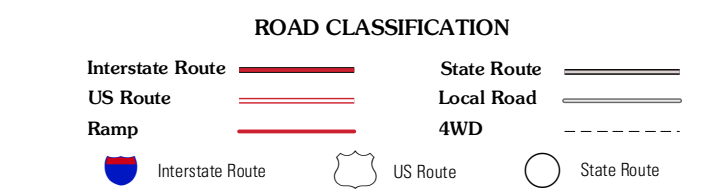
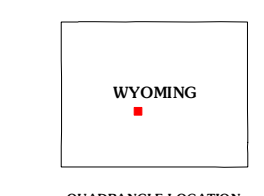
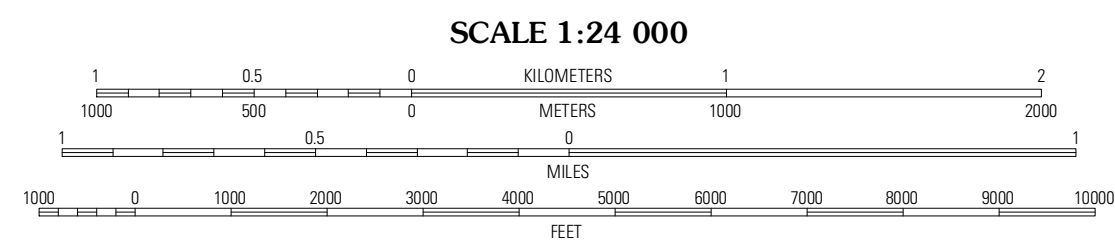
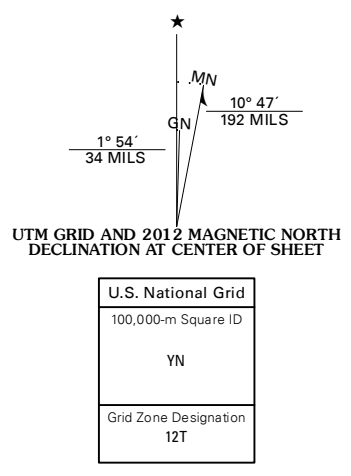
U.S. DEPARTMENT OF THE INTERIOR
U. S. GEOLOGICAL SURVEY



SWEETWATER STATION QUADRANGLE
WYOMING-FREMONT CO.
7.5-MINUTE SERIES



Produced by the United States Geological Survey
North American Datum of 1983 (NAD83)
World Geodetic System of 1984 (WGS84). Projection and
1 000-meter grid: Universal Transverse Mercator, Zone 12T
10 000-foot ticks: Wyoming Coordinate System of 1983
(west central zone)



Imagery.....NAIP, July 2009
Roads.....©2006-2011 TomTom
Names.....GNS, 2011
Hydrography.....National Hydrography Dataset, 2009
Contours.....National Elevation Dataset, 2008
Boundaries.....Census, IB/C, IBC, USGS, 1972 - 2010
Public Land Survey System.....BLM, 2006 - 2008

CONTOUR INTERVAL 20 FEET
NORTH AMERICAN VERTICAL DATUM OF 1988

This map was produced to conform with the
National Geospatial Program US Topo Product Standard, 2011.
A metadata file associated with this product is draft version 0.6.3

Yellowstone Ranch	Dishpan Butte	Elkhorn Springs
Red Canyon	Sweetwater Station	Myers Ranch
Barran Springs	Happy Spring	Soap Holes

ADJOINING 7.5 QUADRANGLES

SWEETWATER STATION, WY
2012