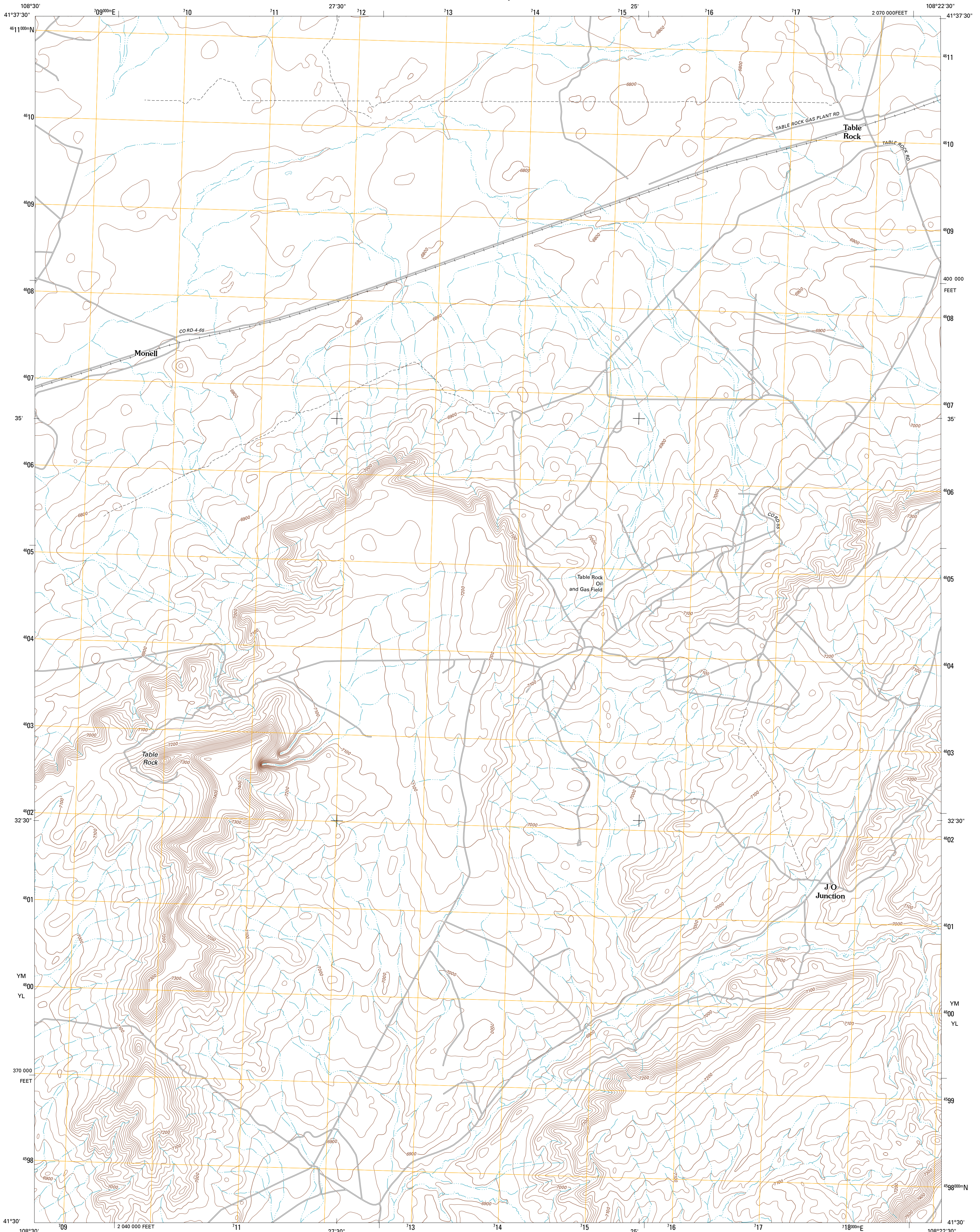




U.S. DEPARTMENT OF THE INTERIOR
U. S. GEOLOGICAL SURVEY

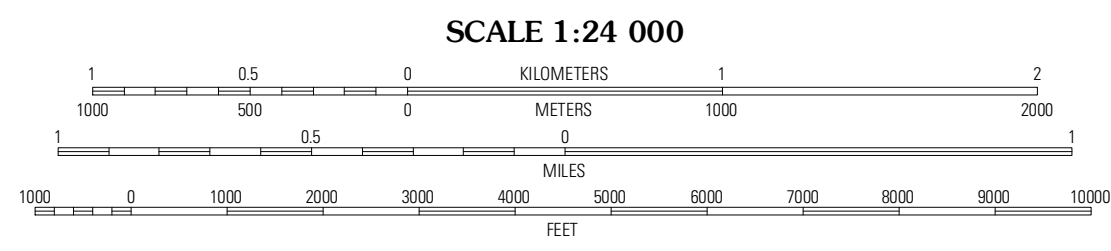
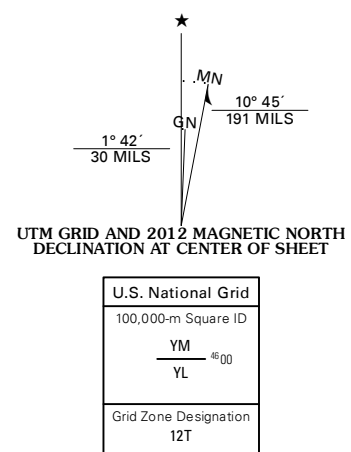


TABLE ROCK QUADRANGLE
WYOMING-SWEETWATER CO.
7.5-MINUTE SERIES

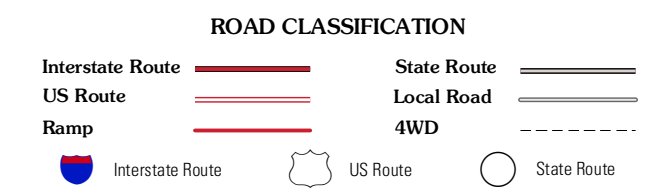


Produced by the United States Geological Survey
North American Datum of 1983 (NAD83)
World Geodetic System of 1984 (WGS84). Projection and
1 000-meter grid Universal Transverse Mercator, Zone 12T
10 000-foot ticks: Wyoming Coordinate System of 1983
(west central zone)

Imagery.....N.A.I.P., July 2009
Roads.....©2006-2011 TomTom
Names.....©2011
Hydrography.....National Hydrography Dataset, 2009
Contours.....National Elevation Dataset, 2007
Boundaries.....Census, IBWC, USGS, 1972 - 2010
Public Land Survey System.....BLM, 2006 - 2008



SCALE 1:24 000
CONTOUR INTERVAL 20 FEET
NORTH AMERICAN VERTICAL DATUM OF 1988
This map was produced to conform with the
National Geospatial Program US Topo Product Standard, 2011.
A metadata file associated with this product is draft version 0.6.3



ADJOINING 7.5' QUADRANGLES		
Bitler Creek NE	Desert Springs	Tipton
Bitler Creek	Table Rock	J O Dugway
Antelope Flats	Fort La Clude	Fort La Clude NE

TABLE ROCK, WY
2012