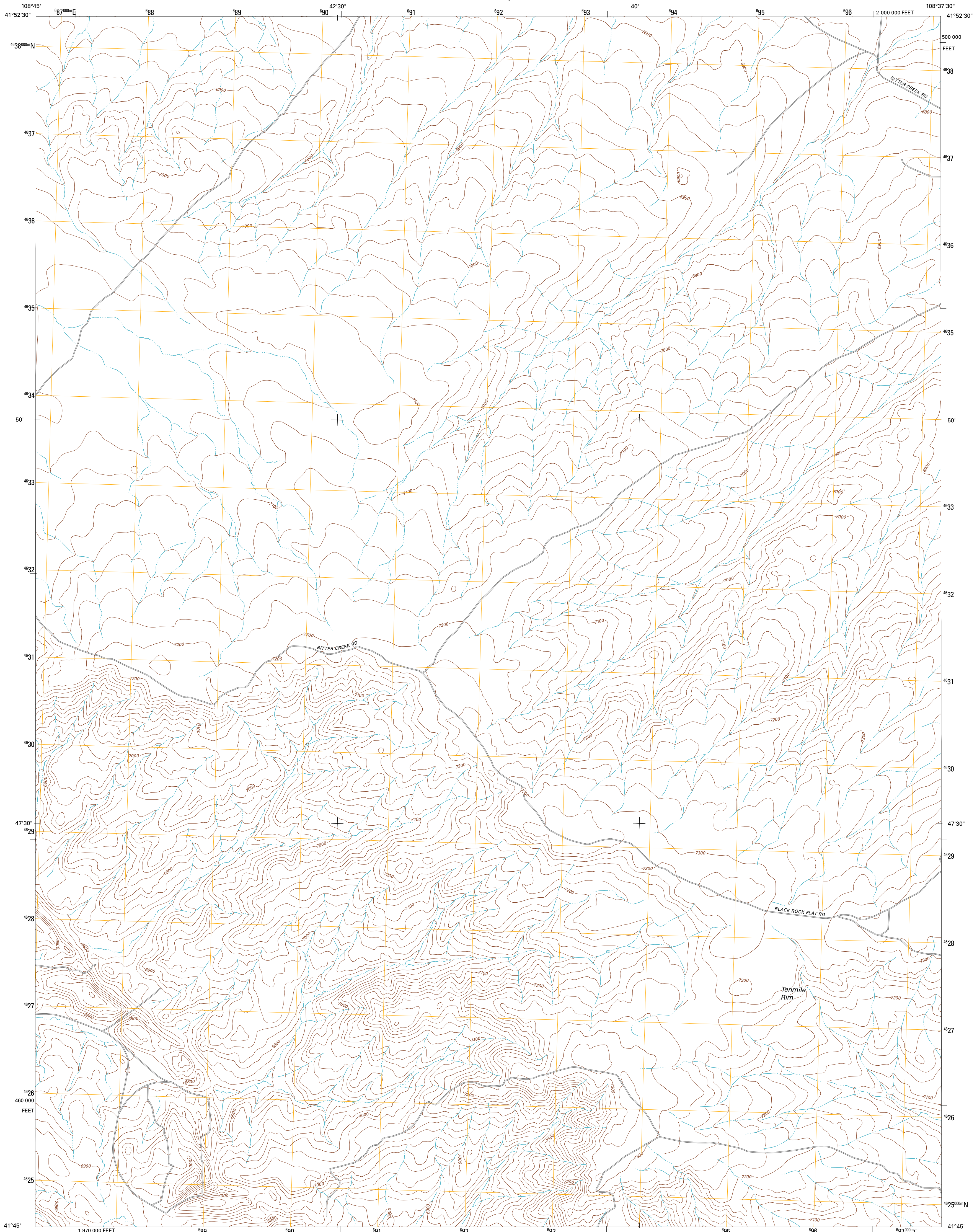




U.S. DEPARTMENT OF THE INTERIOR
U. S. GEOLOGICAL SURVEY

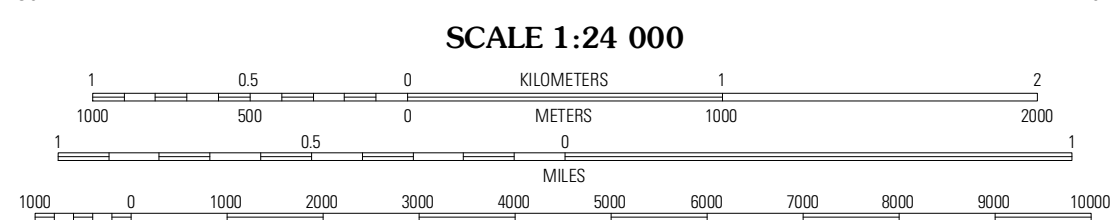
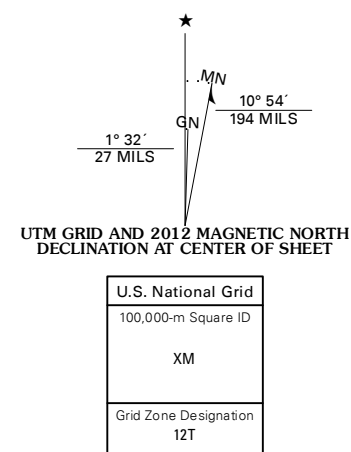


TENMILE RIM QUADRANGLE
WYOMING-SWEETWATER CO.
7.5-MINUTE SERIES

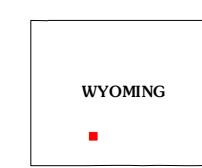


Produced by the United States Geological Survey
North American Datum of 1983 (NAD83)
World Geodetic System of 1984 (WGS84). Projection and
1 000-meter grid: Universal Transverse Mercator, Zone 12T
10 000-foot ticks: Wyoming Coordinate System of 1983
(west central zone)

Imagery:.....NAIP, August 2009
Roads:.....©2006-2011 TomTom
Names:.....GNS, 2011
Hydrography:.....National Hydrography Dataset, 2009
Contours:.....National Elevation Dataset, 2007
Boundaries:.....Census, IBWC, B.C. USGS, 1972 - 2010
Public Land Survey System:.....BLM, 2006 - 2008



CONTOUR INTERVAL 20 FEET
NORTH AMERICAN VERTICAL DATUM OF 1988
This map was produced to conform with the
National Geospatial Program US Topo Product Standard, 2011.
A metadata file associated with this product is draft version 0.6.3



QUADRANGLE LOCATION

Black Rock North	Black Rock Flat West	Black Rock Flat East
Black Rock South	Tenmile Rim	Twelvemile Well
Point of Rocks	Bitter Creek NW	Bitter Creek NE

ADJOINING 7.5 QUADRANGLES

ROAD CLASSIFICATION

Interstate Route	State Route
US Route	Local Road
Ramp	4WD

Legend symbols for Interstate Route, US Route, State Route, Local Road, 4WD.

TENMILE RIM, WY
2012