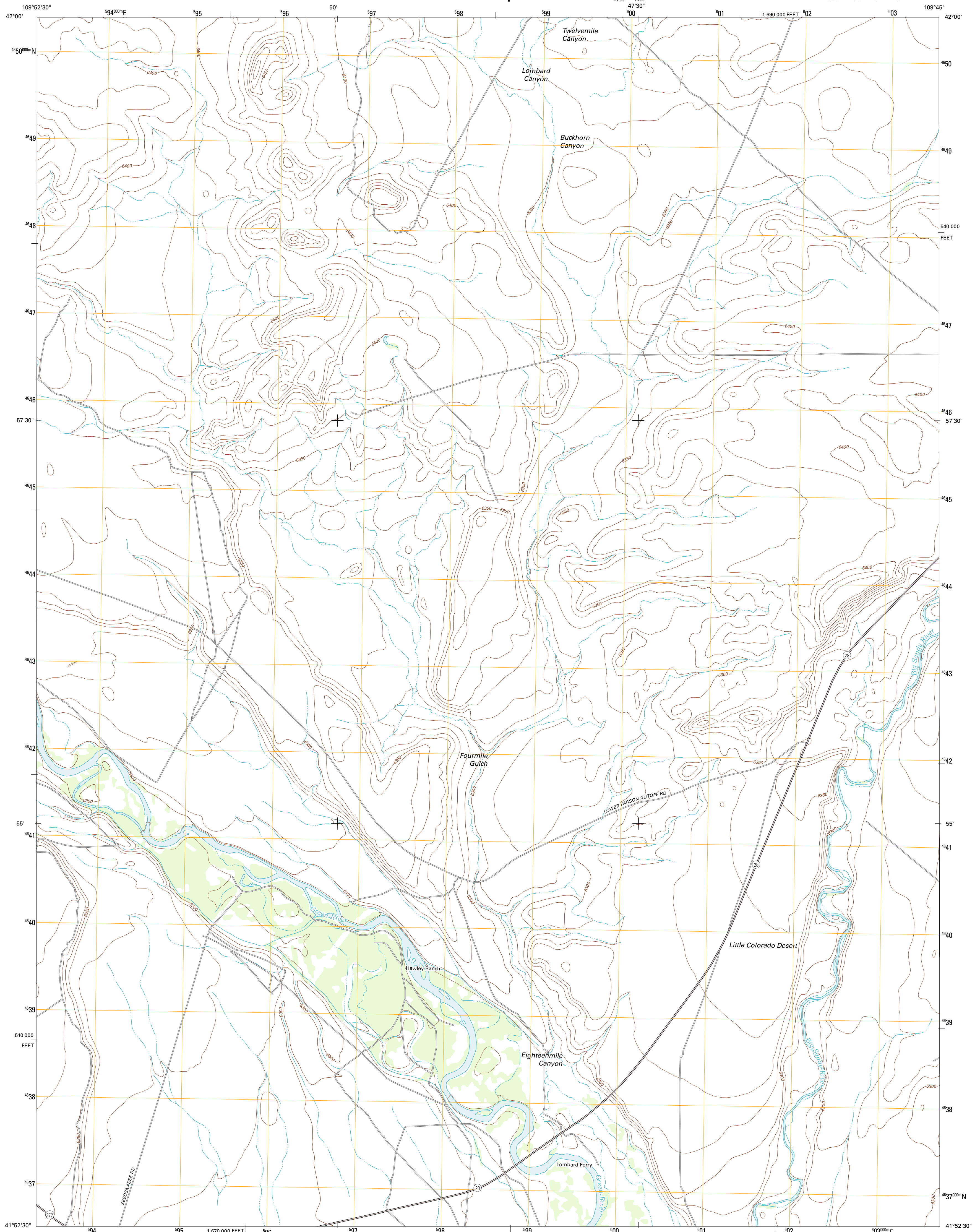




U.S. DEPARTMENT OF THE INTERIOR
U. S. GEOLOGICAL SURVEY

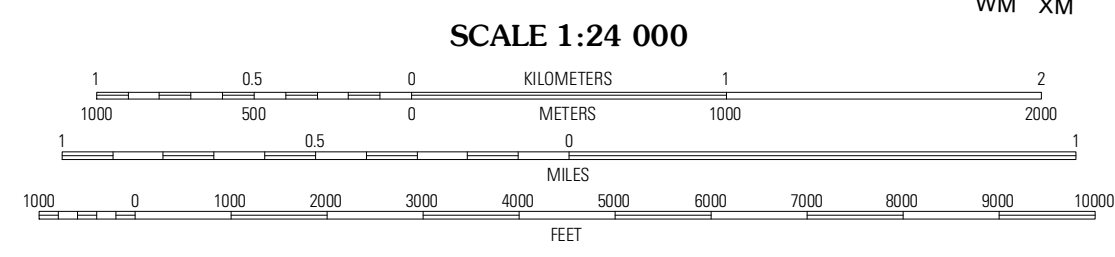
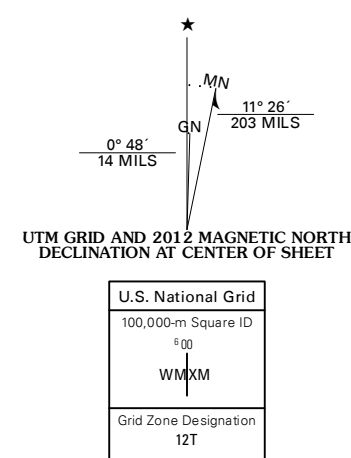


THOMAN SCHOOL QUADRANGLE
WYOMING-SWEETWATER CO.
7.5-MINUTE SERIES



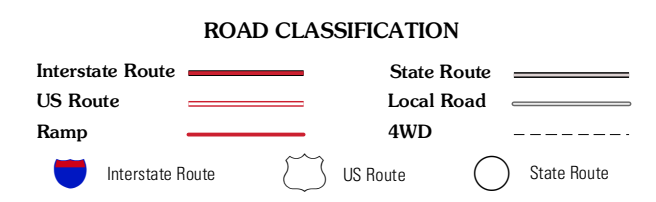
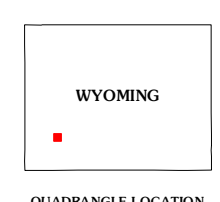
Produced by the United States Geological Survey
North American Datum of 1983 (NAD83)
World Geodetic System of 1984 (WGS84); Projection and
1 000-meter grid; Universal Transverse Mercator, Zone 12T
10 000-foot ticks; Wyoming Coordinate System of 1983
(west central zone)

Imagery.....NAIP, July 2009 - August 2009
Roads.....©2006-2011 TomTom
Names.....GNIS, 2011
Hydrography.....National Hydrography Dataset, 2009
Contours.....National Elevation Dataset, 2000
Boundaries.....Census, IBC, IBC, USGS, 1972 - 2010
Public Land Survey System.....BLM, 2006 - 2008



CONTOUR INTERVAL 10 FEET
NORTH AMERICAN VERTICAL DATUM OF 1988

This map was produced to conform with the National Geospatial Program US Topo Product Standard, 2011. A metadata file associated with this product is draft version 0.6.3



QUADRANGLE LOCATION

Blue Forest	Twelvemile Slak	Simpson Gulch SW
McCullen Bluff	Thoman School	Gesson Bridge
Whiskey Buttes	Lombard Buttes	Big Island Bridge

ADJOINING 7.5' QUADRANGLES

THOMAN SCHOOL, WY
2012