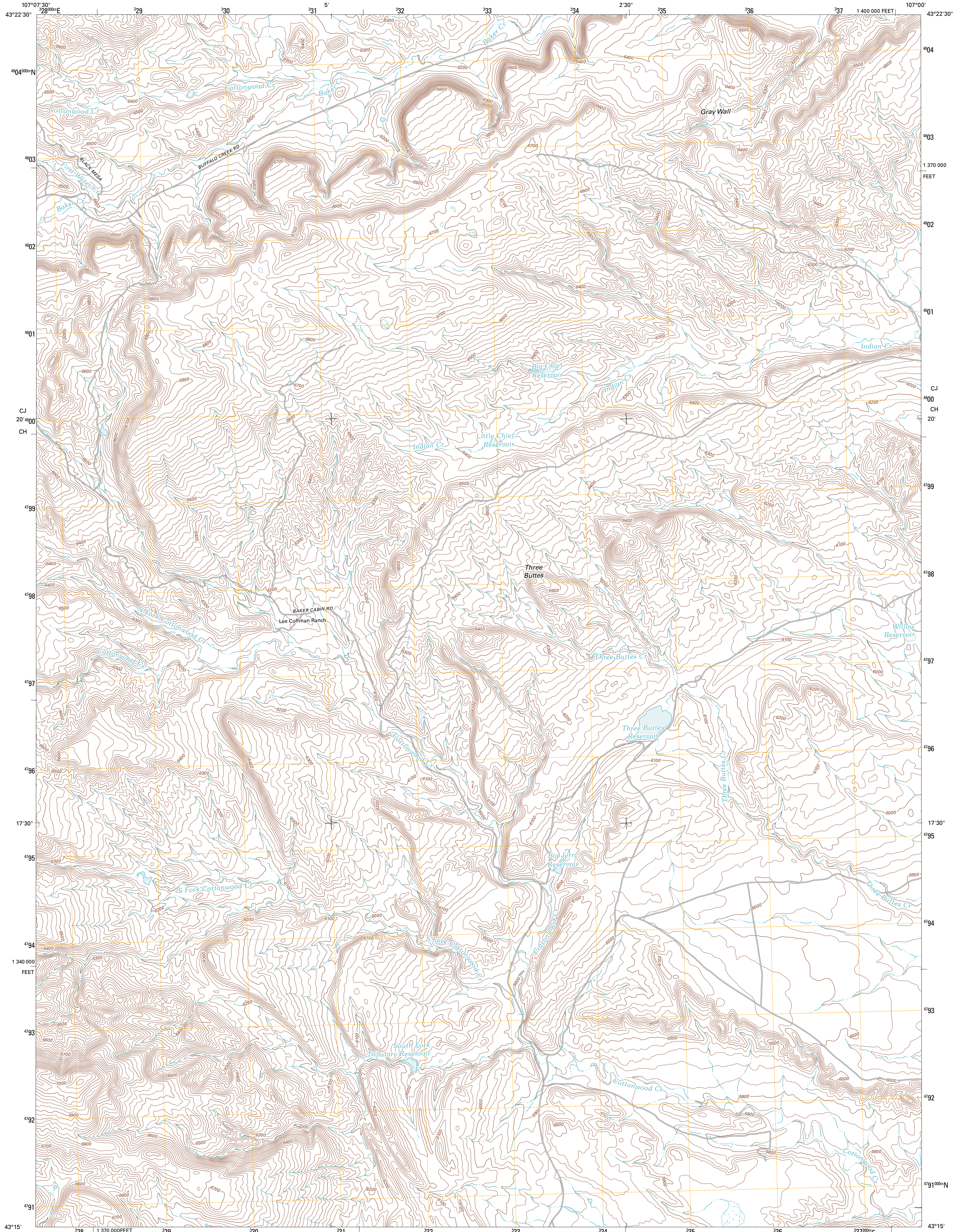




U.S. DEPARTMENT OF THE INTERIOR
U. S. GEOLOGICAL SURVEY

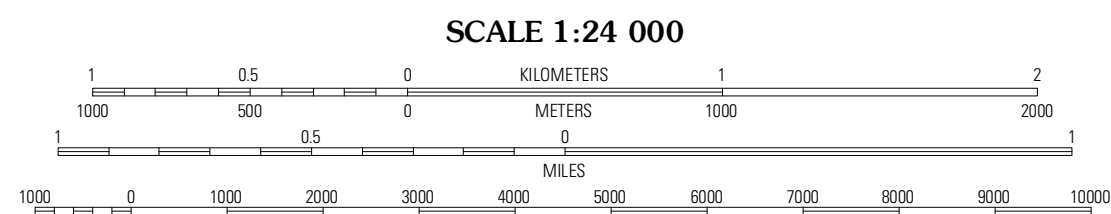
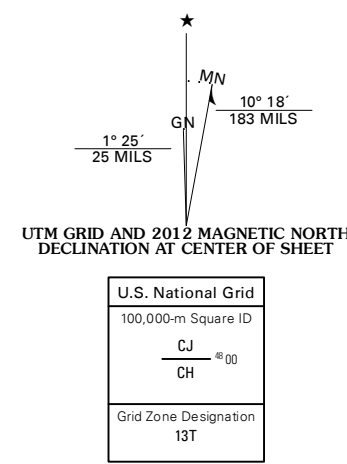


THREE BUTTES QUADRANGLE
WYOMING-NATRONA CO.
7.5-MINUTE SERIES

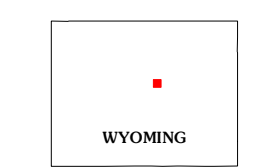


Produced by the United States Geological Survey
North American Datum of 1983 (NAD83)
World Geodetic System of 1984 (WGS84). Projection and
1 000-meter grid: Universal Transverse Mercator, Zone 13T
10 000-foot ticks: Wyoming Coordinate System of 1983 (east
central zone)

Imagery.....NAIP, August 2009
Roads.....©2006-2011 TomTom
Names.....GNS, 2011
Hydrography.....National Hydrography Dataset, 2009
Contours.....National Elevation Dataset, 2011
Boundaries.....Census, BWC, BIC, USGS, 1972 - 2010
Public Land Survey System.....BLM, 2006 - 2008

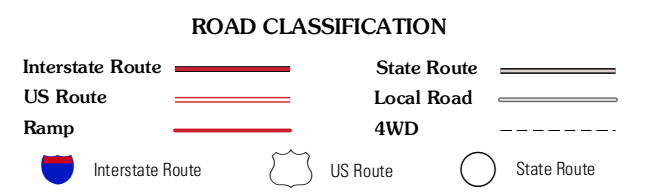


CONTOUR INTERVAL 20 FEET
NORTH AMERICAN VERTICAL DATUM OF 1988
This map was produced to conform with the
National Geospatial Program US Topo Product Standard, 2011.
A metadata file associated with this product is draft version 0.6.3



QUADRANGLE LOCATION

Grave Spring	First Water Draw	Roughback Hill
Deadman Butte	Three Buttes	Flat Top Hill
Walman NW	Notches Dome	Cave Galkh Reservoir



THREE BUTTES, WY
2012

ADJOINING 7.5' QUADRANGLES