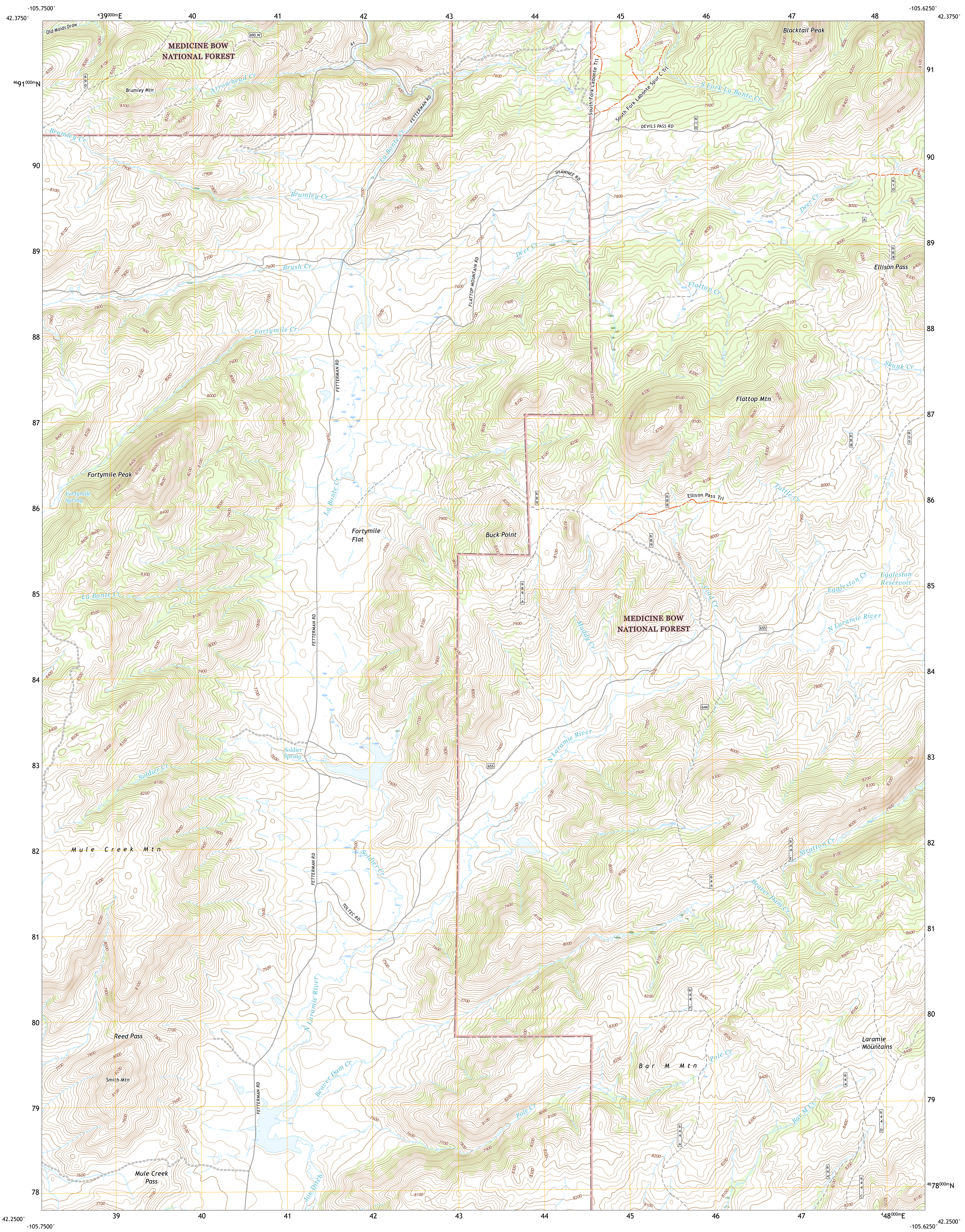




U.S. DEPARTMENT OF THE INTERIOR  
U.S. GEOLOGICAL SURVEY

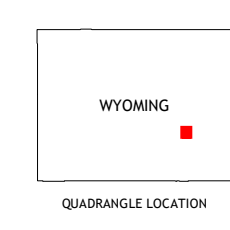
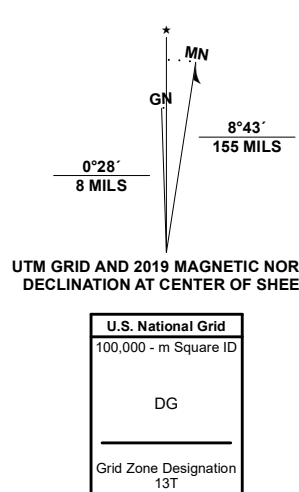


TOLTEC QUADRANGLE  
WYOMING - ALBANY COUNTY  
7.5-MINUTE SERIES



Produced by the United States Geological Survey  
North American Datum of 1983 (NAD83)  
World Geodetic System of 1984 (WGS84), Projection and  
1 000-meter grid/Universal Transverse Mercator, Zone 13T  
This map is not a legal document. Boundaries may be  
generalized for this map scale. Private lands within government  
reservations may not be shown. Obtain permission before  
entering private lands.

Imagery.....N.A.I.P., July 2017 - October 2017  
Roads.....U.S. Census Bureau, 2017  
Roads within US Forest Service Lands with limited Forest Service updates, 2013  
Names.....National Hydrography Dataset, 2004 - 2019  
Names.....National Elevation Dataset, 2006  
Boundaries.....Multiple sources; see metadata file 2017 - 2021  
Public Land Survey System.....BLM, 2020  
Wetlands.....FWS National Wetlands Inventory 1981 - 1982



1	2	3
4	5	6
7	8	

ADJOINING QUADRANGLES

- 1 Warbonnet Peak
- 2 School Section Mountain
- 3 Saddleback Mountain
- 4 Marshall
- 5 Windy Peak
- 6 Rogers Creek
- 7 Cottonwood Creek
- 8 Cow Creek Mountain

ROAD CLASSIFICATION

Expressway	Local Connector	State Route
Secondary Hwy	Local Road	Clearance Route
Ramp	4WD	
Interstate Route	US Route	
FS Primary Route	FS Passenger Route	

Check with local Forest Service unit for current travel conditions and restrictions.

TOLTEC, WY  
2021

