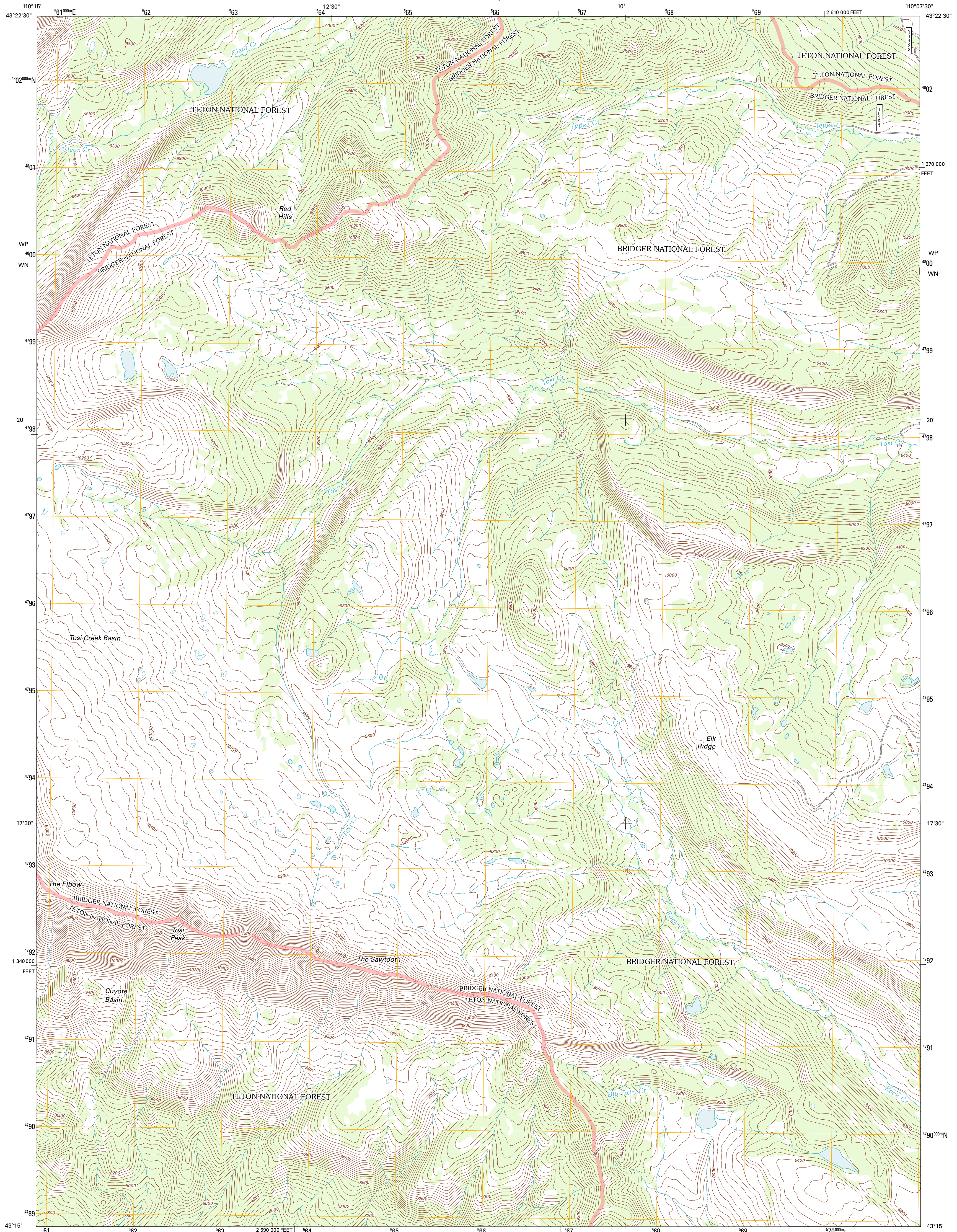




U.S. DEPARTMENT OF THE INTERIOR
U. S. GEOLOGICAL SURVEY

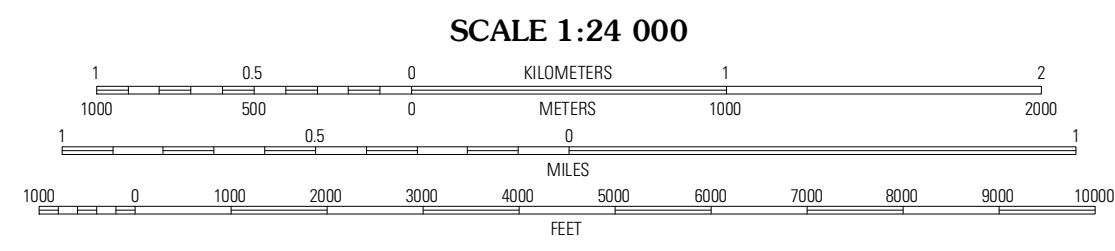
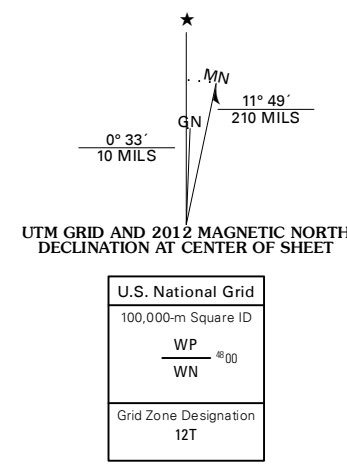


TOSI PEAK QUADRANGLE
WYOMING-SUBLETTE CO.
7.5-MINUTE SERIES



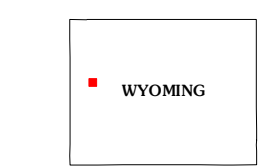
Produced by the United States Geological Survey
North American Datum of 1983 (NAD83)
World Geodetic System of 1984 (WGS84). Projection and
1 000-meter grid: Universal Transverse Mercator, Zone 12T
10 000-foot ticks: Wyoming Coordinate System of 1983
(west zone)

Imagery: NAIP, July 2009
Roads: ©2006-2011 TomTom
Roads within US Forest Service Lands: FSTopo Data
with limited Forest Service updates, 2009
Names: GNIS, 2011
Hydrography: National Hydrography Dataset, 2009
Contours: National Elevation Dataset, 2000
Boundaries: Census, IBWC, IBC, USGS, 1972 - 2010
Public Land Survey System: BLM, 2006 - 2008



CONTOUR INTERVAL 40 FEET
NORTH AMERICAN VERTICAL DATUM OF 1988

This map was produced to conform with the
National Geospatial Program US Topo Product Standard, 2011.
A metadata file associated with this product is draft version 0.6.3



QUADRANGLE LOCATION

Dawson Peak	Ouzel Falls	Mosquito Lake
Doubletop Peak	Tosi Peak	Klondike Hill
Raspberry Ridge	Pass Peak	Dodge Butte

ROAD CLASSIFICATION

Interstate Route	State Route
US Route	Local Road
Ramp	4WD
FS Primary Route	FS Passenger Route
FS High Clearance Route	

Check with local Forest Service unit for current travel conditions and restrictions.

TOSI PEAK, WY
2012

ADJOINING 7.5 QUADRANGLES