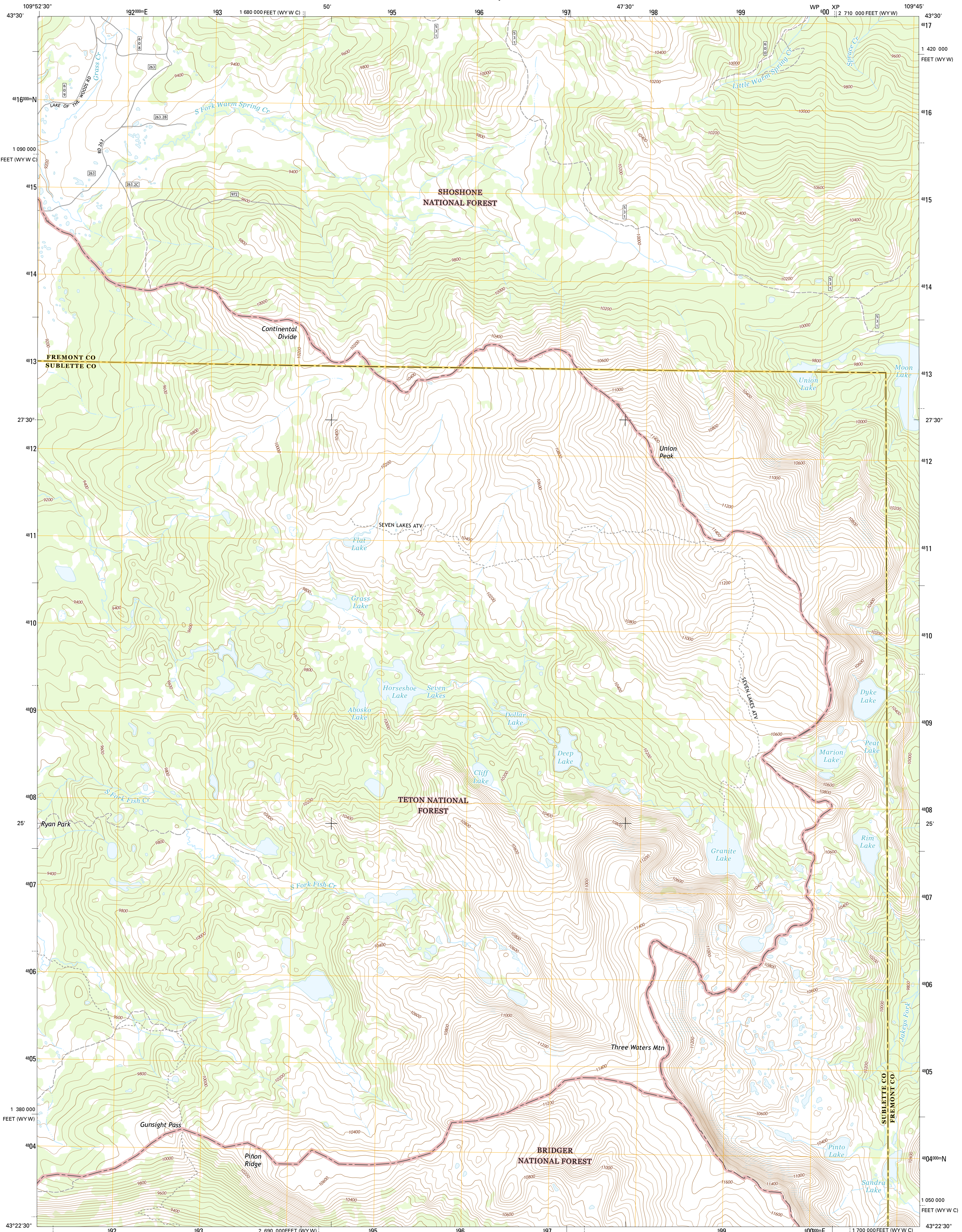




U.S. DEPARTMENT OF THE INTERIOR  
U.S. GEOLOGICAL SURVEY



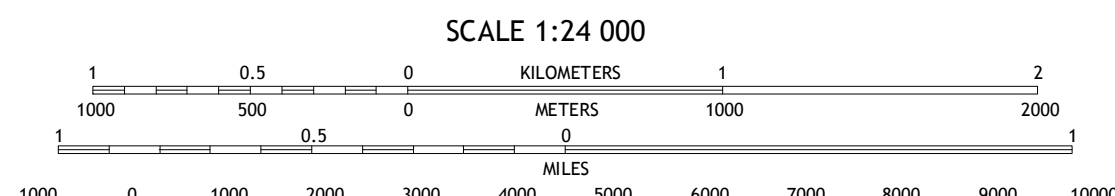
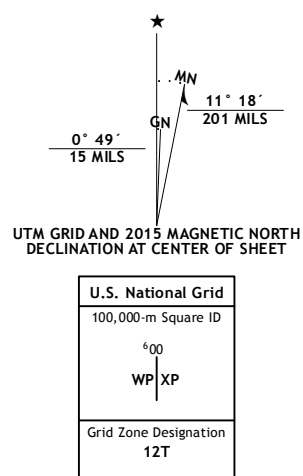
UNION PEAK QUADRANGLE  
WYOMING  
7.5-MINUTE SERIES



Produced by the United States Geological Survey  
North American Datum of 1983 (NAD83)  
World Geodetic System of 1984 (WGS84). Projection and  
1:000-meter grid: Universal Transverse Mercator, Zone 12T  
10 000-foot ticks: Wyoming Coordinate System of 1983 (west  
and west central zones)

This map is not a legal document. Boundaries may be  
generalized for this map scale. Private lands within government  
reservations may not be shown. Obtain permission before  
entering private lands.

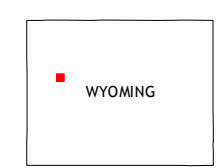
Imagery: NAIP, August 2012  
Roads: HERE, ©2013 - 2014  
Roads within US Forest Service Lands: FSTopo Data  
with limited Forest Service updates, 2012 - 2015  
Names: GNS, 2015  
Hydrography: National Hydrography Dataset, 2012  
Contours: National Elevation Dataset, 2000  
Boundaries: Multiple sources; see metadata file 1972 - 2015  
Public Land Survey System: BLM, 2011



SCALE 1:24 000

CONTOUR INTERVAL 40 FEET  
NORTH AMERICAN VERTICAL DATUM OF 1988

This map was produced to conform with the  
National Geospatial Program US Topo Product Standard, 2011.  
A metadata file associated with this product is draft version 0.6.18



QUADRANGLE LOCATION

ROAD CLASSIFICATION

Expressway	Local Connector
Secondary Hwy	Local Road
Ramp	4WD
Interstate Route	US Route
FS Primary Route	FS Passenger Route
	State Route
	FS High Clearance Route

Check with local Forest Service unit  
for current travel conditions and restrictions.

1	2	3
4	5	6
7	8	

ADJOINING QUADRANGLES

- 1 Fish Lake
- 2 Warm Spring Mountain
- 3 Dubois
- 4 Fish Creek Park
- 5 Simpson Lake
- 6 Big Sheep Mountain
- 7 Green River Lakes
- 8 Downs Mountain

UNION PEAK, WY  
2015

