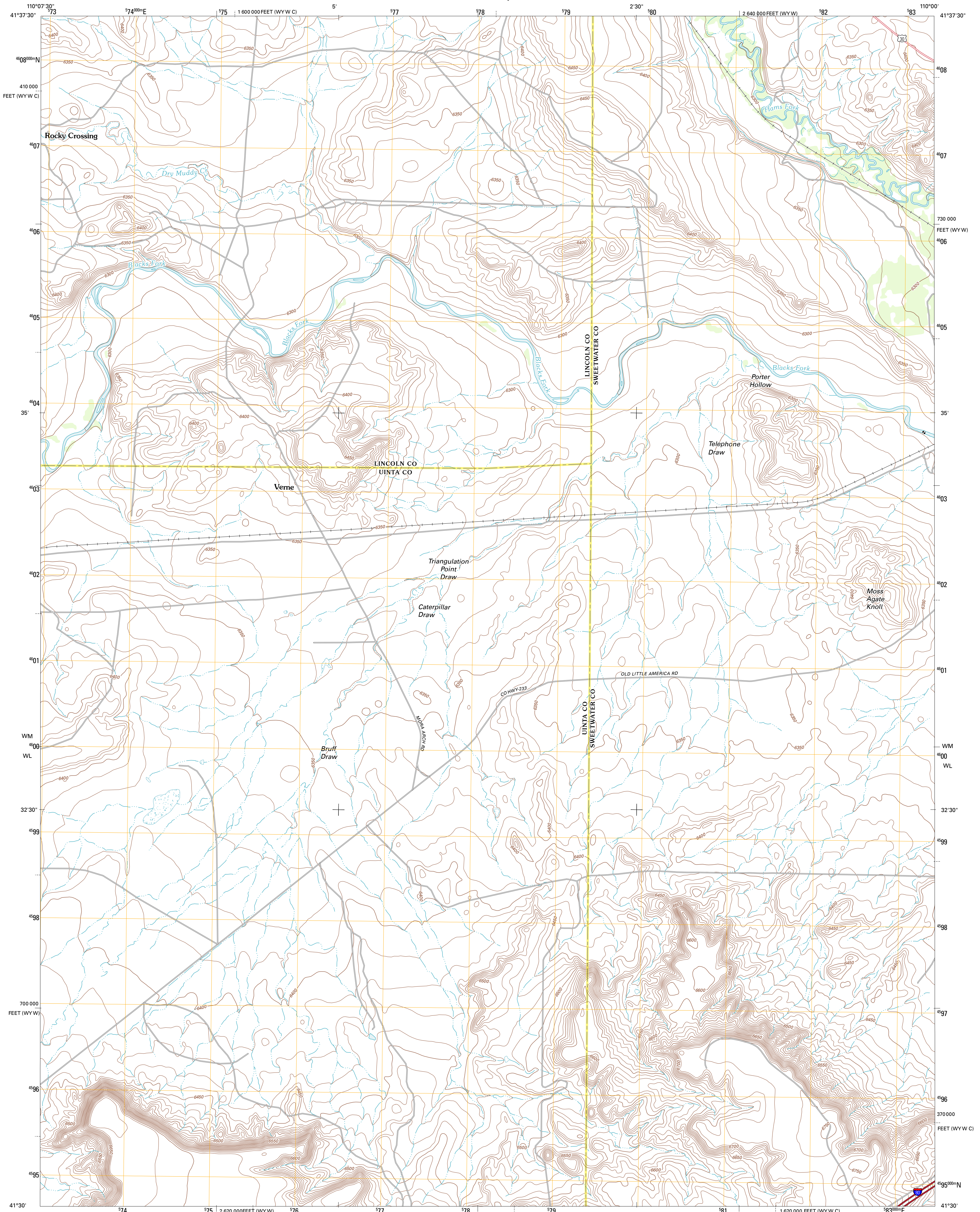




U.S. DEPARTMENT OF THE INTERIOR  
U. S. GEOLOGICAL SURVEY

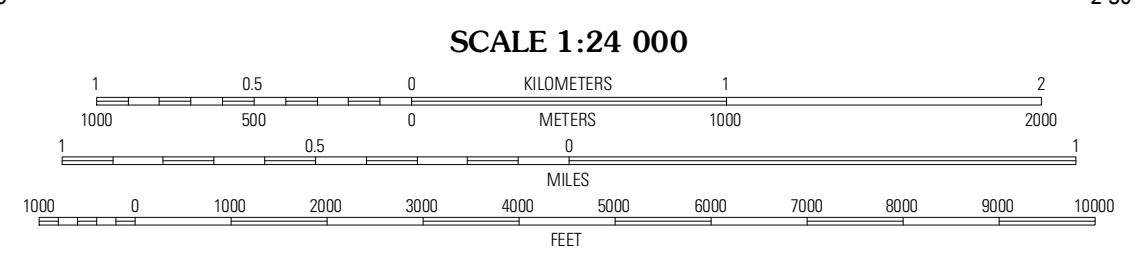
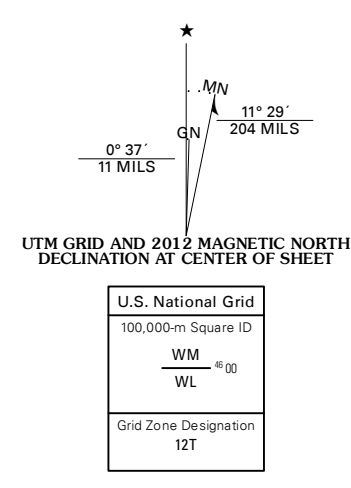


VERNE QUADRANGLE  
WYOMING  
7.5-MINUTE SERIES

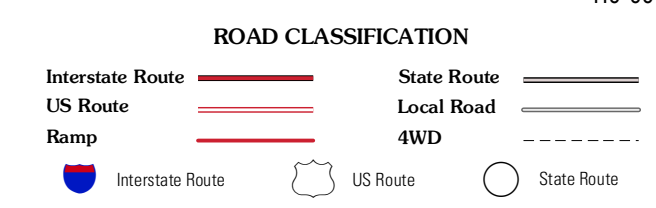
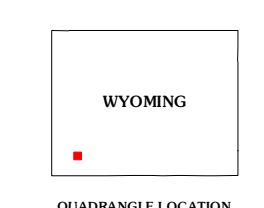


Produced by the United States Geological Survey  
North American Datum of 1983 (NAD83)  
World Geodetic System of 1984 (WGS84). Projection and  
1 000-meter grid: Universal Transverse Mercator, Zone 12T  
(10 000-foot ticks: Wyoming Coordinate System of 1983  
(west and west central zones)

Imagery.....©2006-2011 TomTom  
Roads.....©2006-2011 TomTom  
Names.....GNIS, 2011  
Hydrography.....National Hydrography Dataset, 2009  
Contours.....National Elevation Dataset, 2000  
Boundaries.....Census, IBWC, IBC, USGS, 1972 - 2010  
Public Land Survey System.....BLM, 2006 - 2008



SCALE 1:24 000  
CONTOUR INTERVAL 10 FEET  
NORTH AMERICAN VERTICAL DATUM OF 1988  
This map was produced to conform with the  
National Geospatial Program US Topo Product Standard, 2011.  
A metadata file associated with this product is draft version 0.6.3



ADJOINING 7.5 QUADRANGLES

Church Butte NW	Moxa	Sevenmile Gulch
Church Butte	Verne	Granger
Millerville	Wildcat Butte	Antelope Knoll

VERNE, WY  
2012