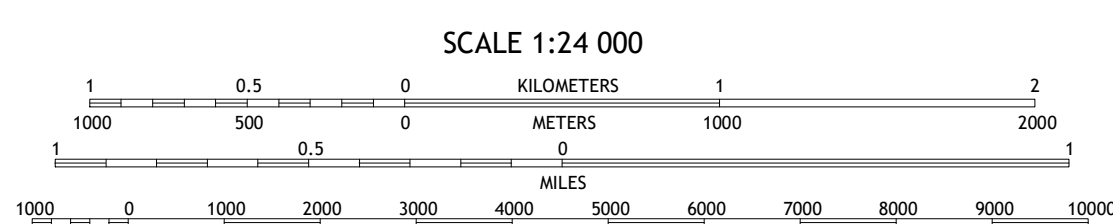
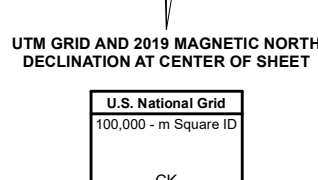
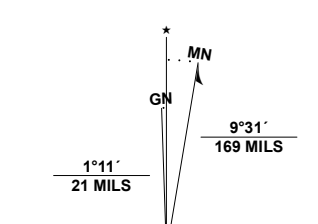
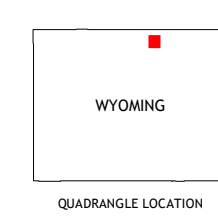


**Produced by the United States Geological Survey**  
North American Datum of 1983 (NAD83)  
World Geodetic System of 1984 (WGS84), Projection and  
1 000-meter grid; Universal Transverse Mercator, Zone 13T  
This map is not a legal document. Boundaries may be  
generalized for this map scale. Private lands within government  
reservations may not be shown. Obtain permission before  
entering private lands.

Imagery.....N.A.I.P., July 2017 - January 2018  
Roads.....U.S. Census Bureau, 2016  
Names.....GNIS, 1979 - 1994  
Hydrography.....National Hydrography Dataset, 2002 - 2019  
Contours.....National Elevation Dataset, 2009  
Boundaries.....Multiple sources; see metadata file, 2019 - 2021  
Public Land Survey System.....BLM, 2020  
Wetlands.....FWS National Wetlands Inventory, 1997



CONTOUR INTERVAL 20 FEET  
NORTH AMERICAN VERTICAL DATUM OF 1988  
This map was produced to conform with the  
National Geospatial Program US Topo Product Standard.



QUADRANGLE LOCATION

1	2	3
4	<b>5</b>	6
7	8	

ADJOINING QUADRANGLES  
1 Wynno  
2 Jones Draw  
3 S R Springs  
4 Buffalo Run Creek  
5 Ulim  
6 Banner  
7 Horse Hill  
8 Ucross

**ROAD CLASSIFICATION**

Expressway (thick blue line)  
Secondary Hwy (thin blue line)  
Ramp (double red line)  
Interstate Route (red shield)  
US Route (white shield)  
State Route (black shield)

Local Connector (dashed line)  
Local Road (dotted line)  
4WD (dashed line with cross-ticks)  
US Route (thick black line)  
State Route (thin black line)

