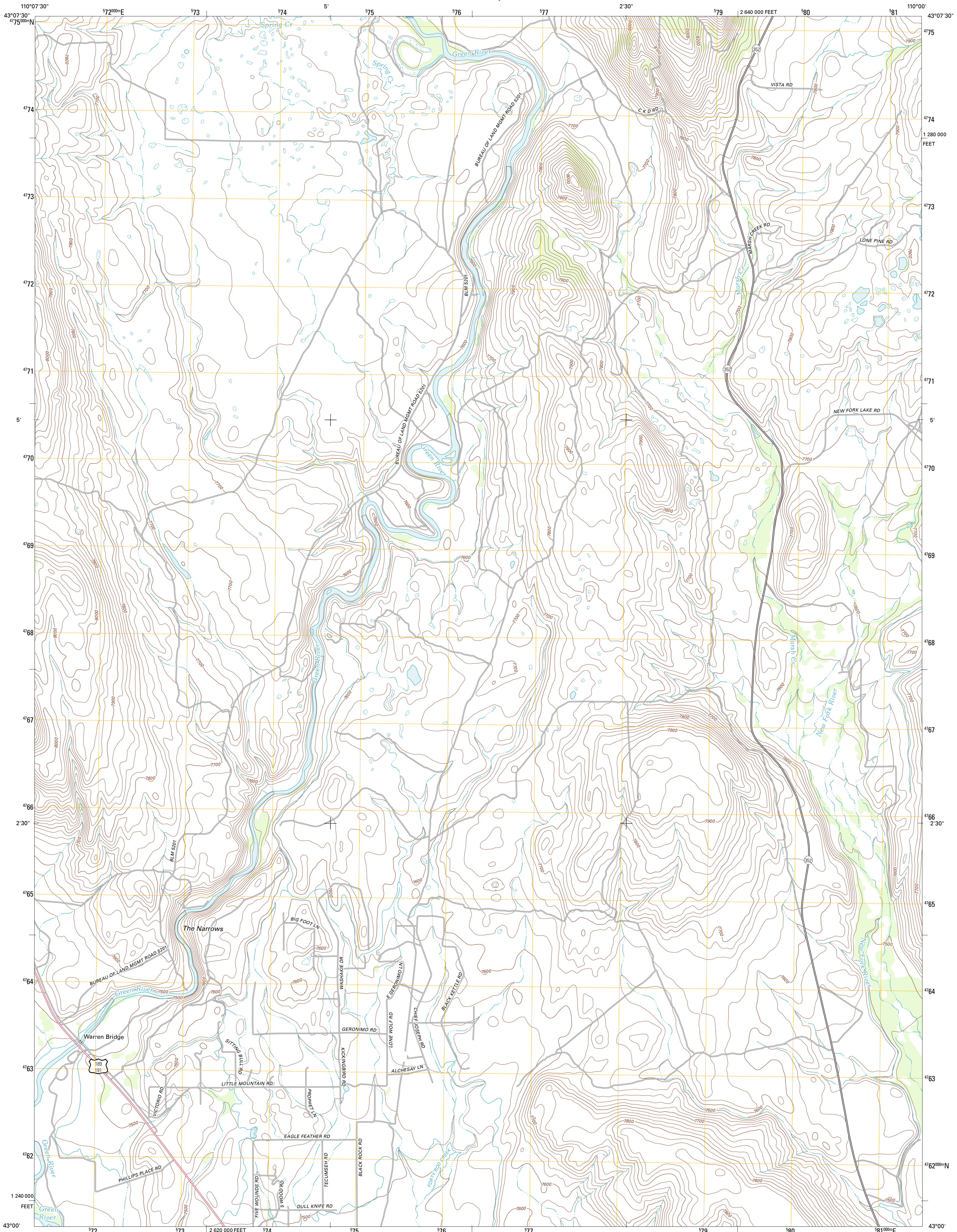




U.S. DEPARTMENT OF THE INTERIOR
U. S. GEOLOGICAL SURVEY

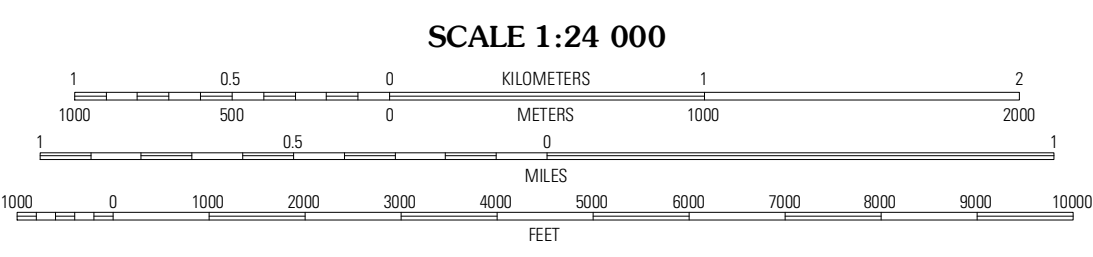
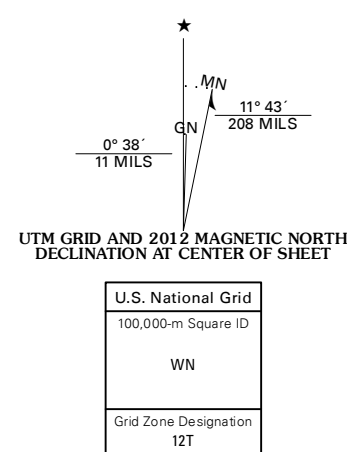


WARREN BRIDGE QUADRANGLE
WYOMING-SUBLETTE CO.
7.5-MINUTE SERIES



Produced by the United States Geological Survey
North American Datum of 1983 (NAD83)
World Geodetic System of 1984 (WGS84). Projection and
1 000-meter grid: Universal Transverse Mercator, Zone 12T
10 000-foot ticks: Wyoming Coordinate System of 1983
(west zone)

Imagery:.....NAP, July 2009
Roads:.....©2006-2011, TomTom
Names:.....©2006-2011, TomTom
Hydrography:.....National Hydrography Dataset, 2009
Contours:.....National Elevation Dataset, 2000
Boundaries:.....Census, IBWC, IBC, USGS, 1972 - 2010
Public Land Survey System:.....BLM, 2006 - 2008



CONTOUR INTERVAL 20 FEET
NORTH AMERICAN VERTICAL DATUM OF 1988

This map was produced to conform with the
National Geospatial Program US Topo Product Standard, 2011.
A metadata file associated with this product is draft version 0.6.3

ROAD CLASSIFICATION

Interstate Route

US Route

Ramp

State Route

Local Road

4WD

US Route

State Route

QUADRANGLE LOCATION

Pass Peak	Dodge Butte	Kendall Mountain
Signal Hill	Warren Bridge	New Fork Lakes
Webb Draw	Daniel Junction	Con

ADJOINING 7.5 QUADRANGLES

WARREN BRIDGE, WY
2012