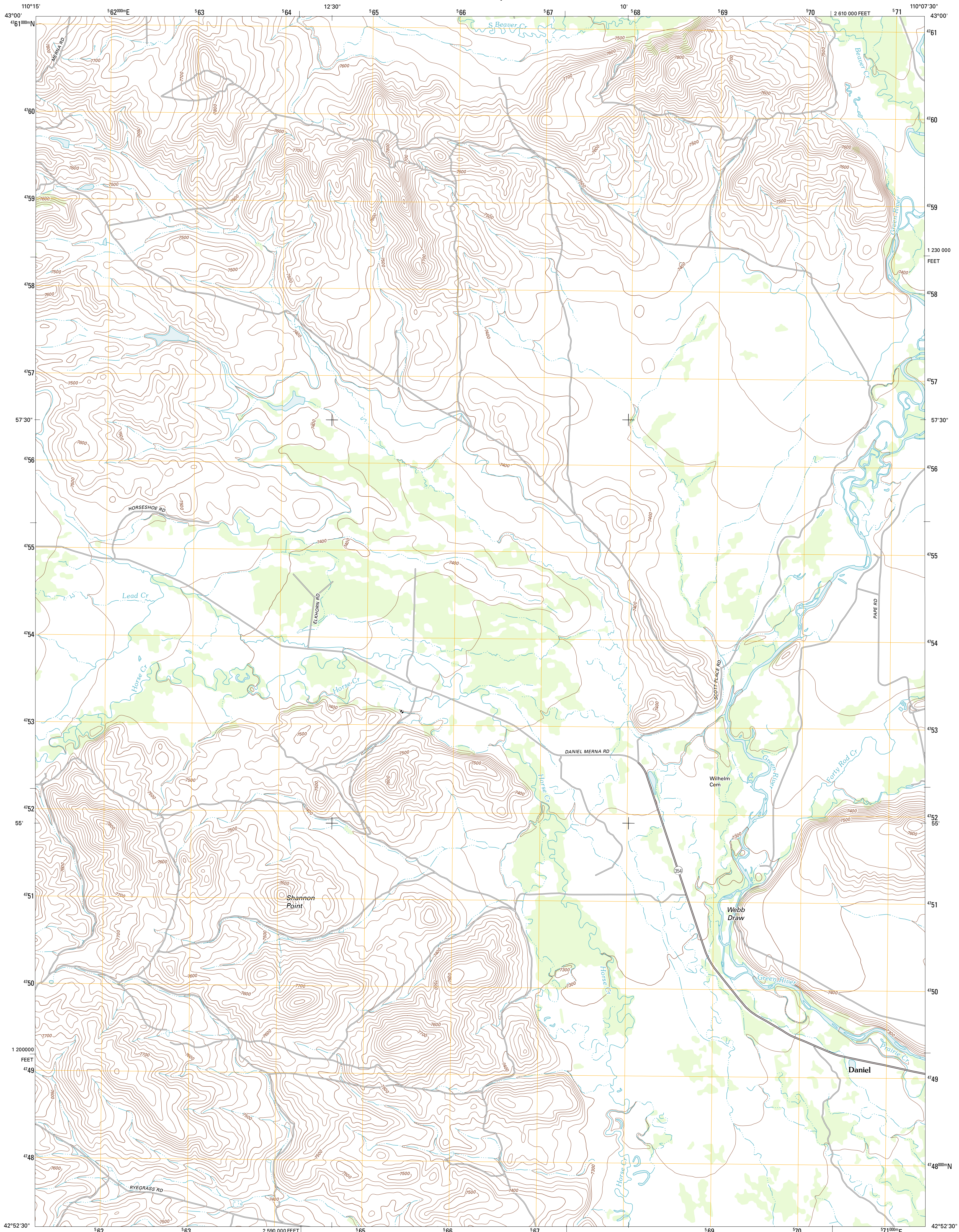




U.S. DEPARTMENT OF THE INTERIOR
U. S. GEOLOGICAL SURVEY

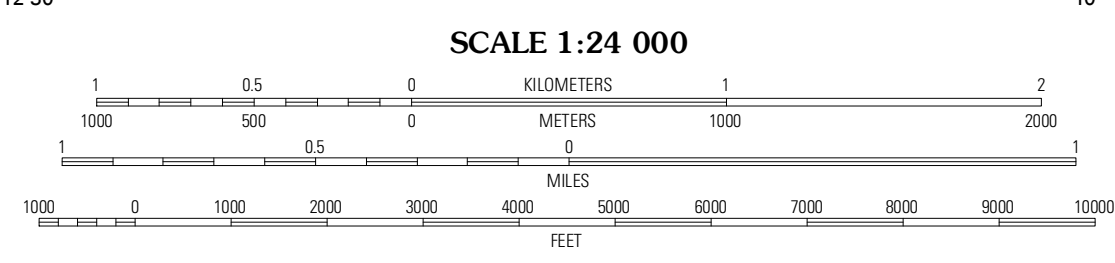
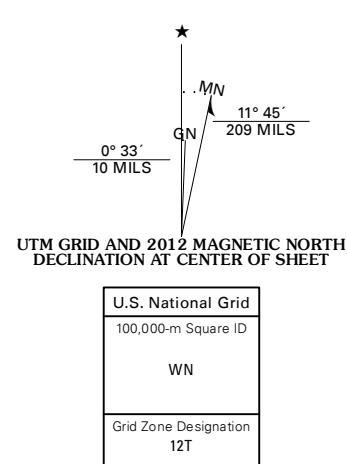


WEBB DRAW QUADRANGLE
WYOMING-SUBLETTE CO.
7.5-MINUTE SERIES

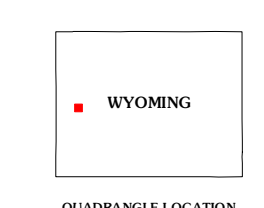


Produced by the United States Geological Survey
North American Datum of 1983 (NAD83)
World Geodetic System of 1984 (WGS84). Projection and
1 000-meter grid: Universal Transverse Mercator, Zone 12T
10 000-foot ticks: Wyoming Coordinate System of 1983
(west zone)

Imagery:.....NAIP, July 2009 - August 2009
Roads:.....©2006-2011 TomTom
Names:.....GNIS, 2011
Hydrography:.....National Hydrography Dataset, 2009
Contours:.....National Elevation Dataset, 2000
Boundaries:.....Census, IBV, IBC, USGS, 1972 - 2010
Public Land Survey System:.....BLM, 2006 - 2008

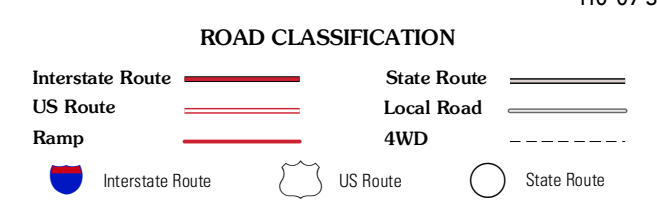


CONTOUR INTERVAL 20 FEET
NORTH AMERICAN VERTICAL DATUM OF 1988
This map was produced to conform with the
National Geospatial Program US Topo Product Standard, 2011.
A metadata file associated with this product is draft version 0.6.3



QUADRANGLE LOCATION

Kismet Peak	Signal Hill	Warren Bridge
Merna	Webb Draw	Daniel Junction
Halfway	Onion Springs	Daniel



WEBB DRAW, WY
2012

ADJOINING 7.5 QUADRANGLES