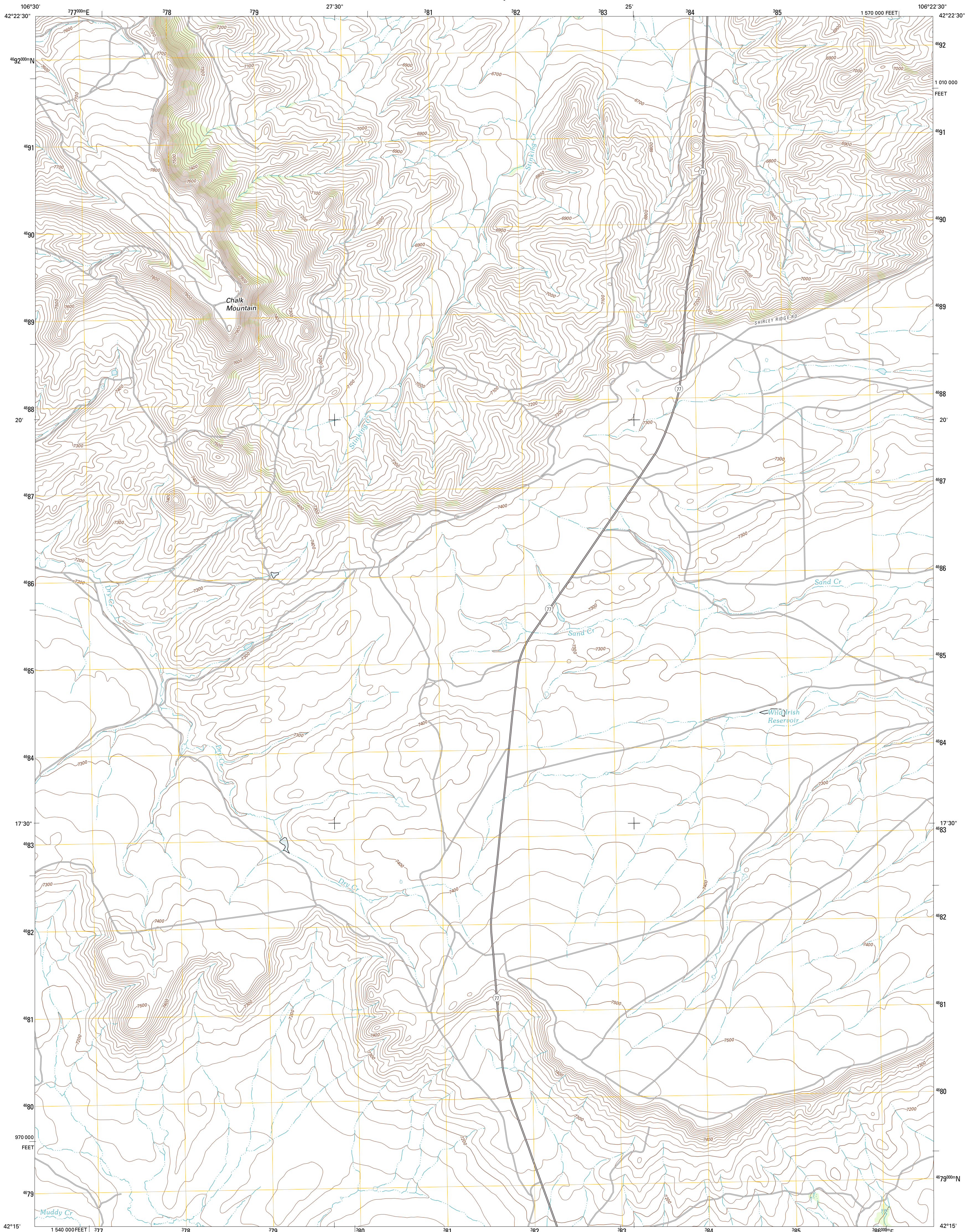




U.S. DEPARTMENT OF THE INTERIOR  
U. S. GEOLOGICAL SURVEY

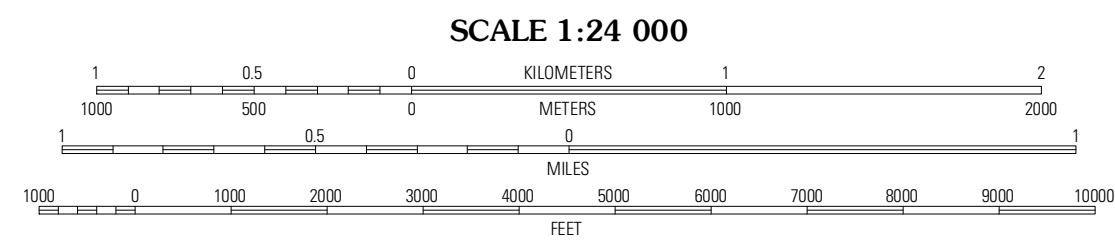
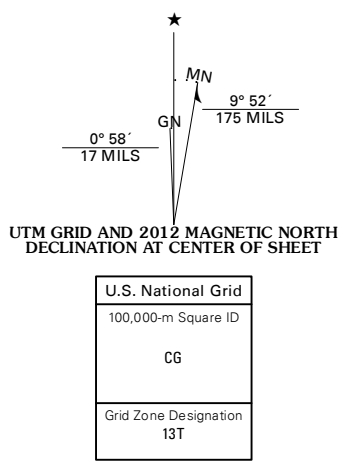


WILD IRISH RESERVOIR QUADRANGLE  
WYOMING-CARBON CO.  
7.5-MINUTE SERIES



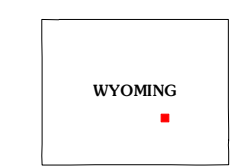
Produced by the United States Geological Survey  
North American Datum of 1983 (NAD83)  
World Geodetic System of 1984 (WGS84). Projection and  
1 000-meter grid: Universal Transverse Mercator, Zone 13T  
10 000-foot ticks: Wyoming Coordinate System of 1983 (east  
central zone)

Imagery.....NAP, August 2009  
Roads.....©2006-2011 TomTom  
Names.....GNIS, 2011  
Hydrography.....National Hydrography Dataset, 2009  
Contours.....National Elevation Dataset, 2007  
Boundaries.....Census, BWC, BIC, USGS, 1972 - 2010  
Public Land Survey System.....BLM, 2006 - 2008



CONTOUR INTERVAL 20 FEET  
NORTH AMERICAN VERTICAL DATUM OF 1988

This map was produced to conform with the  
National Geospatial Program US Topo Product Standard, 2011.  
A metadata file associated with this product is draft version 0.6.3



QUADRANGLE LOCATION

Bear Mountain	Horse Peak	Mud Springs
Fourmile Point	Wild Irish Reservoir	Measel Spring Reservoir
The Q Ranch	Pine Hill	Cameron Creek

ADJOINING 7.5' QUADRANGLES

ROAD CLASSIFICATION

Interstate Route	State Route
US Route	Local Road
Ramp	4WD

Interstate Route US Route State Route

WILD IRISH RESERVOIR, WY  
2012